

FIGURE 5.2

- Legend**
- Scheme Design
 - Preston Western Distributor Road (PWDR)
 - Site Area
 - 1km Study Area
 - Watercourses
 - Biological Heritage Site
 - Woodland, Trees and Hedgerows
 - Tree Preservation Orders
 - Public Rights of Way
 - Lancaster Canal Long Distance Path
 - National Cycle Route (NCR)
 - Preston Guild Wheel (NCR 622)
 - Golf Course
 - Listed Buildings
- Future Housing Development**
- Proposed Residential Development at Lea Road
 - Planning Approved
 - Planning Pending
 - Under Construction



P03	AUG 2022	Final Issue	MS	PH	PH	KS
P02	JUN 2022	Final Issue	MS	AR	AR	PH
P01	OCT 2021	Initial Issue	MS	AR	AR	PH
Rev.	Date	Purpose of revision	Drawn	Check'd	Rev'd	App'r'd

Jacobs

5 First Street, Manchester, M15 4GU, UK
Tel: +44(0)161 235 6000 Fax: +44(0)161 235 6001
www.jacobs.com

Lancashire
County Council

Cottam Parkway Railway Station

LANDSCAPE AND VISUAL CONSTRAINTS PLAN

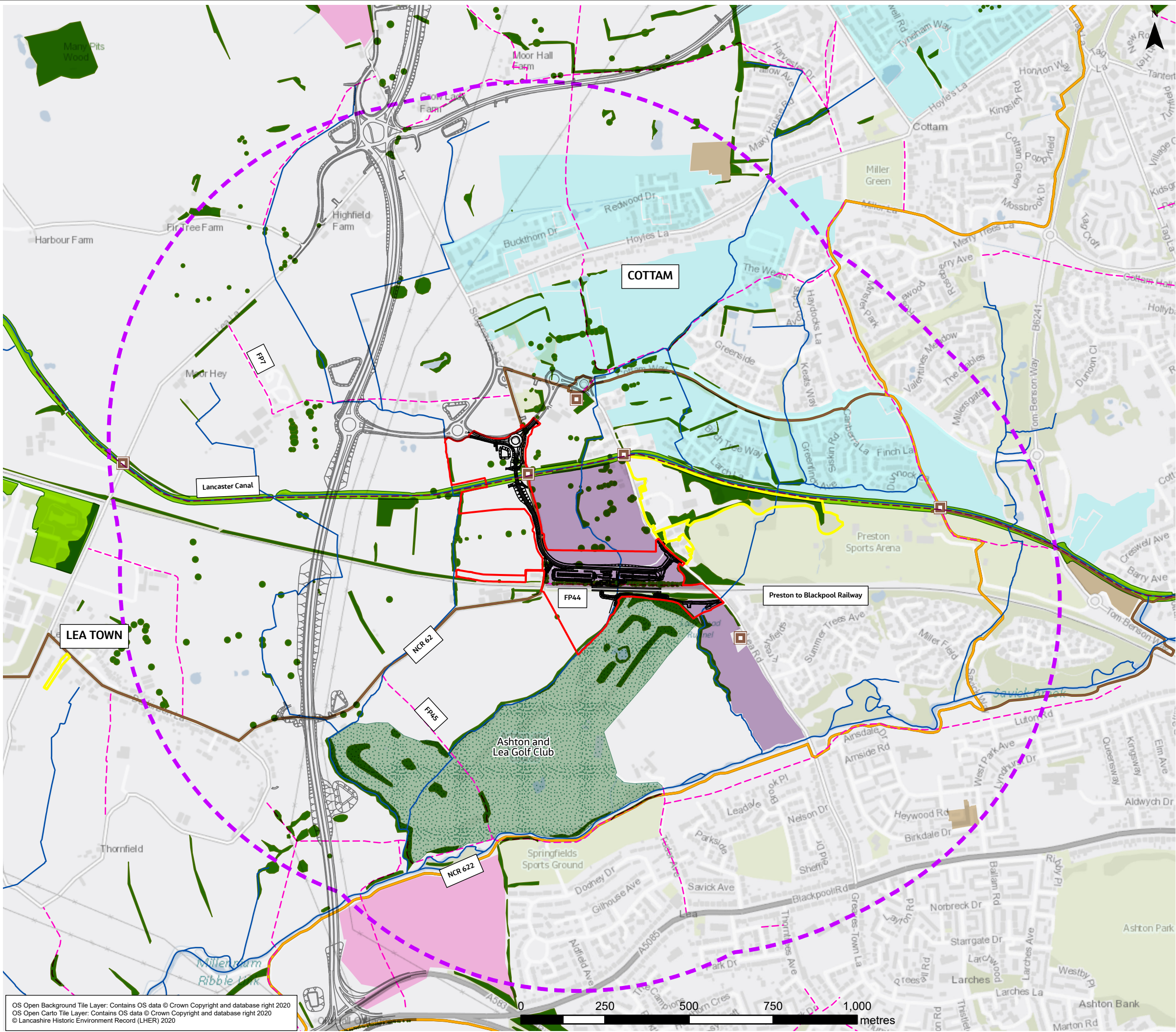
FINAL

Scale @ A3 1:11,000 DO NOT SCALE

Jacobs No. B2327FEF

B2327FEF-JAC-ELS-00-DR-ENV-0005

This drawing is not to be used in whole in or part other than for the intended purpose and project as defined on this drawing. Refer to the contract for full terms and conditions.



OS Open Background Tile Layer: Contains OS data © Crown Copyright and database right 2020
OS Open Carto Tile Layer: Contains OS data © Crown Copyright and database right 2020
© Lancashire Historic Environment Record (LHER) 2020