



Plant Schedule

QTY	UNIT	CODE	PLANT NAME	STOCK	FORM	GIRTH/HEIGHT
5	No.	ACE CAM s	Acer campestre	B	STD	8-10cm
7	No.	ACE GRI hs	Acer griseum	C 45-85L	STD	12-14cm
14	No.	ACE CRI hs	Acer platanoides 'Crimson King'	RB	STD	12-14cm
13	No.	ALN IMP hs	Alnus glutinosa 'Imperialis'	RB	STD	12-14cm
19	No.	ALN GLU s	Alnus glutinosa	B	STD	8-10cm
28	No.	BET PEN s	Betula pendula	B	STD	8-10cm
25	No.	BET JAC hs	Betula utilis Jacquemontii	RB	STD	12-14cm
11	No.	CRA MON s	Crataegus monogyna	B	STD	8-10cm
18	No.	LIQ STY hs	Liquidambar styraciflua	RB	STD	12-14cm
8	No.	POP TRE ss	Populus tremula	B	STD	10-12cm
14	No.	PRU AVI s	Prunus avium	B	STD	8-10cm
8	No.	PRU SCH 8	Prunus x schmittii	RB	STD	08-10cm
19	No.	PRU Ser S2	Prunus serotina	RB	STD	12-14cm
25	No.	QUE PET hs	Quercus petraea	RB	STD	12-14cm
29	No.	QUE ROB12	Quercus robur	RB	STD	12-14cm
7	No.	SOR AUC s	Sorbus aucuparia	B	STD	8-10cm

PERCENT	QTY	UNIT	PLANT NAME	STOCK	SIZE
Hedge Mixes					
NATIVE HEDGE MIX planted @ 9/m in a Double Staggered Row					
20%			Crataegus monogyna	B Trans	60-80cm
20%			Fagus sylvatica	B Trans	60-80cm
15%			Carpinus betulus	B Trans	60-80cm
15%			Corylus avellana	B Trans	60-80cm
10%			Cornus sanguinea	B Trans	60-80cm
10%			Ilex aquifolium	C 3L	40-60cm
10%			Viburnum Opulus	B Trans	60-80cm

PERCENT	QTY	UNIT	PLANT NAME	STOCK	SIZE
Plant Mixes					
GROUND COVER MIX planted @ 9/m ²					
20%			Liriope muscari	C 2L	20-30cm
20%			Hakonechloa macra 'Aureola'	C 2L	20-30cm
15%			Euonymus fortunei 'Coloratus'	C 2L	20-30cm
15%			Pachysandra terminalis	C 2L	20-30cm
10%			Asarum europaeum	C 2L	20-30cm
10%			Lysimachia nummularia 'Aurea'	C 2L	20-30cm
10%			Waldsteinia ternata	C 2L	20-30cm

PERCENT	QTY	UNIT	PLANT NAME	STOCK	SIZE
Flowering Herbaceous Mix					
FLOWERING HERBACEOUS MIX planted @ 9/m ²					
5%			Hamamelis intermedia	C 5L	60-80cm
15%			Deschampsia Cespitosa	C 3L	40-60cm
15%			Calamagrostis x acutiflora 'Karl Foerster'	C 3L	40-60cm
15%			Stipa tenuissima	C 3L	40-60cm
10%			Cnidium rivulare 'Atropurpureum'	C 2L	20-30cm
10%			Verbena bonariensis	C 3L	40-60cm
10%			Allium 'Cristophii'	C 2L	20-30cm
10%			Sedum 'Matrona'	C 3L	40-60cm
10%			Salvia x sylvestris 'Serenade'	C 2L	20-30cm

PERCENT	QTY	UNIT	PLANT NAME	STOCK	SIZE
Decorative Shrub Mix					
DECORATIVE SHRUB MIX planted @ 3/m ²					
20%			Hamamelis intermedia	C 5L	60-80cm
20%			Salix lanata	C 5L	60-80cm
20%			Viburnum tinus 'French white'	C 5L	60-80cm
15%			Cornus sanguinea	C 5L	60-80cm
15%			Daphne bholua 'Jacqueline Postill'	C 5L	60-80cm
10%			Skimmia x confusa 'Kew Green'	C 5L	60-80cm

PERCENT	QTY	UNIT	PLANT NAME	STOCK	SIZE
Native Shrub Mix					
NATIVE SHRUB MIX planted @ 1m centres					
10%			Viburnum opulus	B Trans	60-80cm
10%			Viburnum lantana	B Trans	60-80cm
10%			Cornus sanguinea	B Trans	60-80cm
20%			Crataegus monogyna	B Trans	60-80cm
10%			Ligustrum vulgare	C 3L	40-60cm
10%			Ulex europaeus	C 3L	40-60cm
10%			Sambucus nigra	B Trans	60-80cm
10%			Corylus avellana	C 3L	40-60cm
5%			Ilex aquifolium	C 3L	40-60cm
5%			Taxus baccata	C 3L	40-60cm

PERCENT	QTY	UNIT	PLANT NAME	STOCK	SIZE
Native Woodland Planting Mix					
NATIVE WOODLAND PLANTING MIX planted @ 2m centres					
20%			Crataegus monogyna	Cell-grov	100-125cm
15%			Betula pubescens	Cell-grov	150-175cm
10%			Prunus spinosa	Cell-grov	100-125cm
15%			Corylus avellana	Cell-grov	150-175cm
10%			Quercus petraea	Cell-grov	100-125cm
15%			Prunus avium	Cell-grov	100-125cm
15%			Sorbus aucuparia	Cell-grov	100-125cm

PERCENT	QTY	UNIT	PLANT NAME	STOCK	SIZE
Species Rich Grassland Mix					
SPECIES RICH GRASSLAND MIX					
100%			No. RE1 Traditional Hay Meadow	Seed	

PERCENT	QTY	UNIT	PLANT NAME	STOCK	SIZE
Pollen and Nectar Wildflower Mix					
POLLEN AND NECTAR WILDFLOWER MIX					
100%			No. EN1 Special Pollen & Nectar Wildflowers	Seed	

PERCENT	QTY	UNIT	PLANT NAME	STOCK	SIZE
Water Meadow (MGS) Mix					
WATER MEADOW (MGS) MIX planted					
100%			No. RE3 River Floodplain Water Meadow	Seed	

PERCENT	QTY	UNIT	PLANT NAME	STOCK	SIZE
Native Aquatic Mix					
NATIVE AQUATIC MIX planted @ 5/m ²					
15%			Myosotis scorpioides	C 2L	
15%			Mentha aquatica	C 2L	
15%			Ranunculus lingua	C 2L	
20%			Myriophyllum spicatum	C Clump	
20%			Polygonum amphibium	C 2L	
15%			Ranunculus aquatilis	C 2L	

PERCENT	QTY	UNIT	PLANT NAME	STOCK	SIZE
Native Reeds Mix					
NATIVE REEDS MIX planted @ 5/m ²					
15%			Carex acutiformis	C 1L	
15%			Iris pseudacorus	C 1L	
15%			Sparganium erectum	C 1L	
15%			Scirpoides holoschoenus	C 1L	
10%			Juncus articulatus	C 1L	
10%			Lythrum salicaria	C 1L	
10%			Ranunculus lingua	C 1L	
5%			Phragmites australis	C 1L	
5%			Typha latifolia	C 1L	

Notes and Abbreviations

B = Bare root (bagged).

C = Container (or pot) grown, followed by size of the container (or pot).

cc = Root volume in cubic centimetres

FORM = Shape of tree as supplied by the nursery.

QTY = Quantity

RB = Rootballed (balled and wrapped).

Std = (Clear stem) Standard.

STOCK = Root condition/protection method eg Bare root.

Trans = Transplant (or undercut seedling).

- Refer to specification for further information.

- All plants to be completely hardened off

- Substitutions to be agreed with Landscape Architect.

Do not scale this drawing (printed or electronic version).

Contractors must check all dimensions from site.

This drawing is copyright and is for use on this site only. This drawing should be read in conjunction with all relevant consultants drawings and specialist subcontractors / supply chain drawings and specifications.

All works to be carried out in accordance with the latest British Standards / Codes of Practice unless specifically directed otherwise in the specification.

Responsibility for the reproduction of this drawing in paper form, or issued in electronic format, lies with the recipient to check that all information has been replicated in full and to correct when compared to the original paper or electronic image.

Graphical representations of equipment on this drawing have been co-ordinated, but are approximations only. Please refer to the specifications and / or details for actual sizes and / or specific contractor construction information.



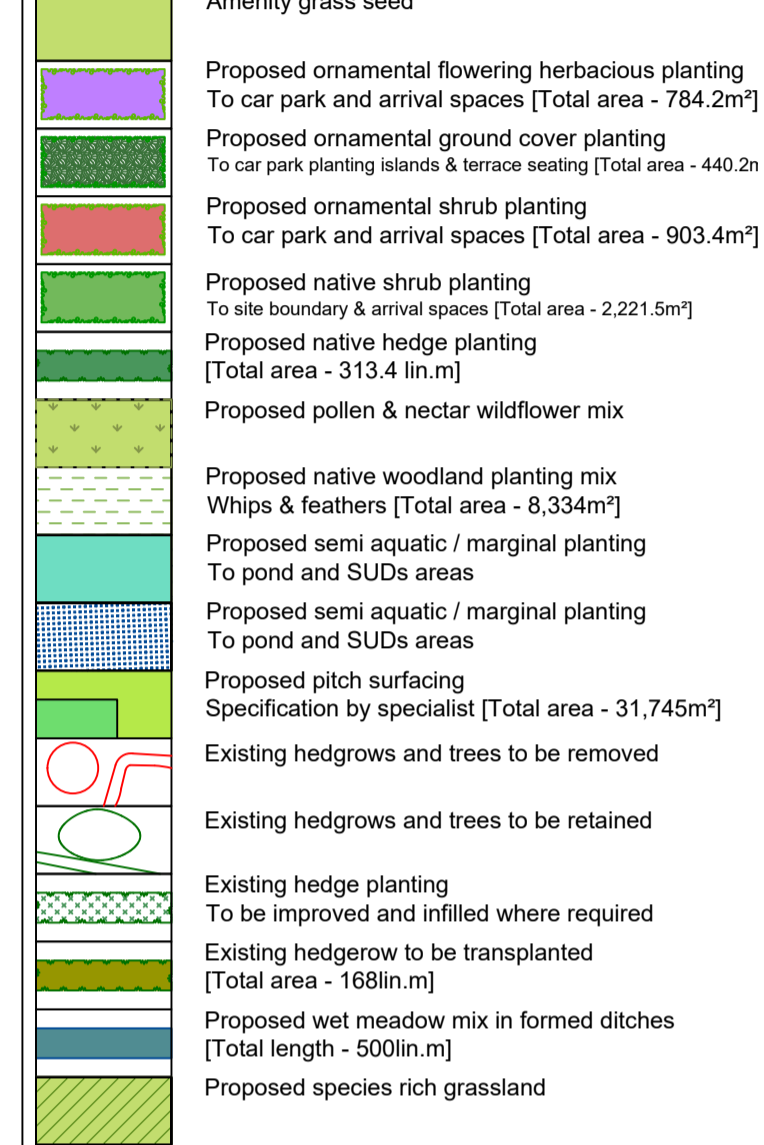
Notes:-

Proposed earthwork contours

Street tree planting: Heavy standard 12-14cm girth [Total - 103 No.]

Informal native tree planting: Select standard 10-12cm girth [Total - 147 No.]

Amenity grass seed



REV.	DATE	DESCRIPTION	DRAWN	CHKD
P14	13/01/23	AMENDED ISSUE	SA	ME
P13	20/12/22	AMENDED ISSUE	SA	ME
P12	19/12/22	AMENDED ISSUE	SA	ME
P11	21/07/22	AMENDED ISSUE	SA	MT
P10	20/07/22	AMENDED ISSUE	SA	MT
P09	20/07/22	LAYOUT UPDATED	SA	MT



A: Ground Floor, The Tower, Deva City Office Park, Trinity Way, Manchester M3 7BF

T: +44 (0) 161 312 3131

weareurbangreen.co.uk

Client:	ERIC WRIGHT		
Project:	CRICKET FACILITY, FARINGTON		
Title:	SOFT LANDSCAPE 3/3		
Issue:	PLANNING		
Drawn:	RS	Checked:	SA
Approved:	MT		
Project:	UG1016	Scale @ A1:	1:500
Date:	26/01/22		
Dwg No:	UG_1016_LAN_SL_DRW_04	Revision:	P14