



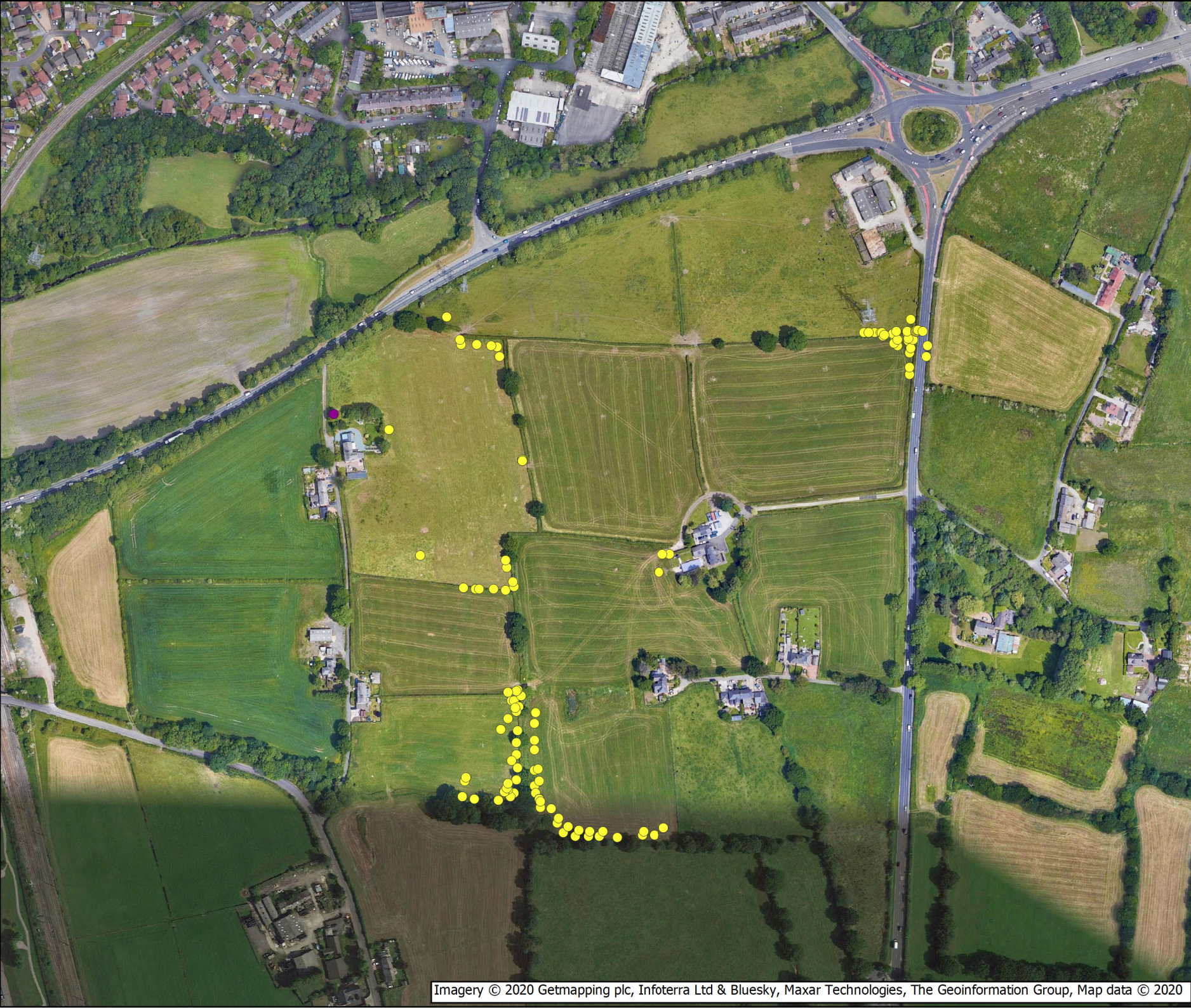
- Legend**
- Common pipistrelle
 - Noctule bat
 - Soprano pipistrelle
 - Whiskered / Brandt's

Project:
Woodcock Estate Planning Strategy

Drawing Title:
Transect Survey
25 September 2021

Date:
17/01/2022

Revision:
01



- Legend**
- Common pipistrelle
 - Noctule bat
 - Soprano pipistrelle
 - Whiskered / Brandt's

Project:
Woodcock Estate Planning Strategy

Drawing Title:
Transect Survey
18 October 2021

| | |
|---------------------|-----------------|
| Date: 17/01/2022 | Revision: 01 |
|---------------------|-----------------|

Appendix E - Photograph Plates



Plate 1. Improved grassland



Plate 2. Improved grassland



Plate 3. Improved grassland



Plate 4. Improved grassland



Plate 5. Hedgerow



Plate 6. Hedgerow



Plate 7. Hedgerow



Plate 8. Hedgerow



Plate 9. T1 Oak



Plate 10. T2 Oak



Plate 11. T3 Oak



Plate 12. T6 Oak, T5 Oak, T4 Oak (left to right)



Plate 13. T7 Oak



Plate 14. T8 Oak



Plate 15. T9 Oak



Plate 16. T10 Oak



Plate 17. T13 Oak, T12 Oak, T11 Oak (left to right)



Plate 18. T14 Oak



Plate 19. T15 Oak



Plate 20. T16 Oak



Plate 21. T17 Oak



Plate 22. T18 Oak



Plate 25. T19 Oak



Plate 26. T20 Oak



Plate 27. T21 Oak



Plate 28. T22 Oak



Plate 29. T23 Oak



Plate 30. T24 Oak



Plate 31. T25 Alder, T26 Alder (left to right)



Plate 32. T27 Oak



Plate 33. Belt of broad-leaved lime trees



Plate 34. Tree belt on western boundary



Plate 35. Ditch



Plate 36. Standing water



Plate 37. Himalayan Balsam (north-west of site)

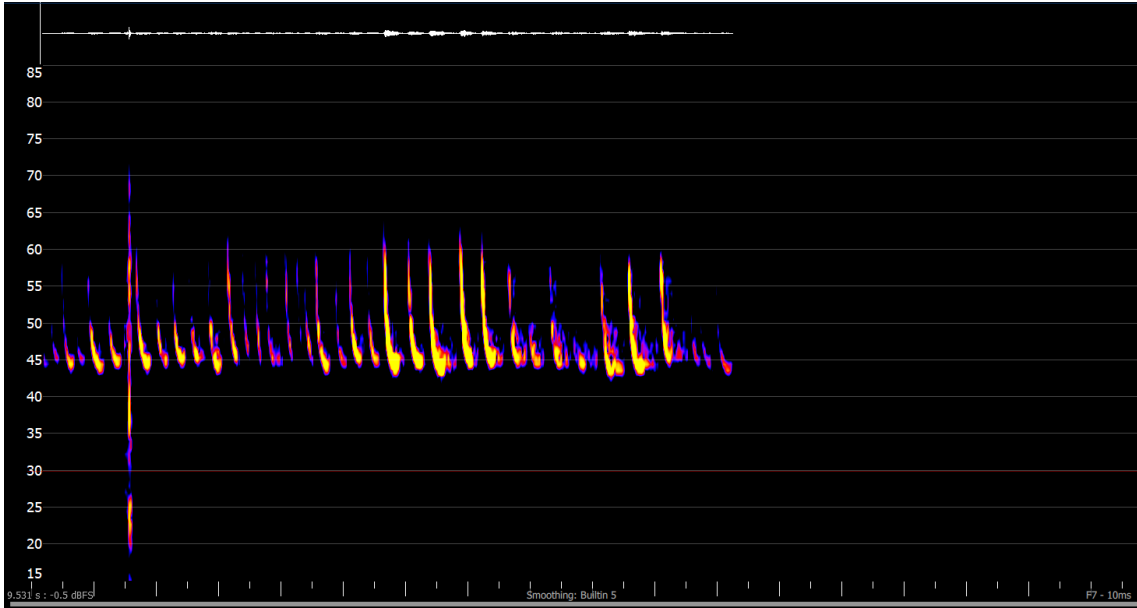


Plate 38. Himalayan Balsam (south of site)

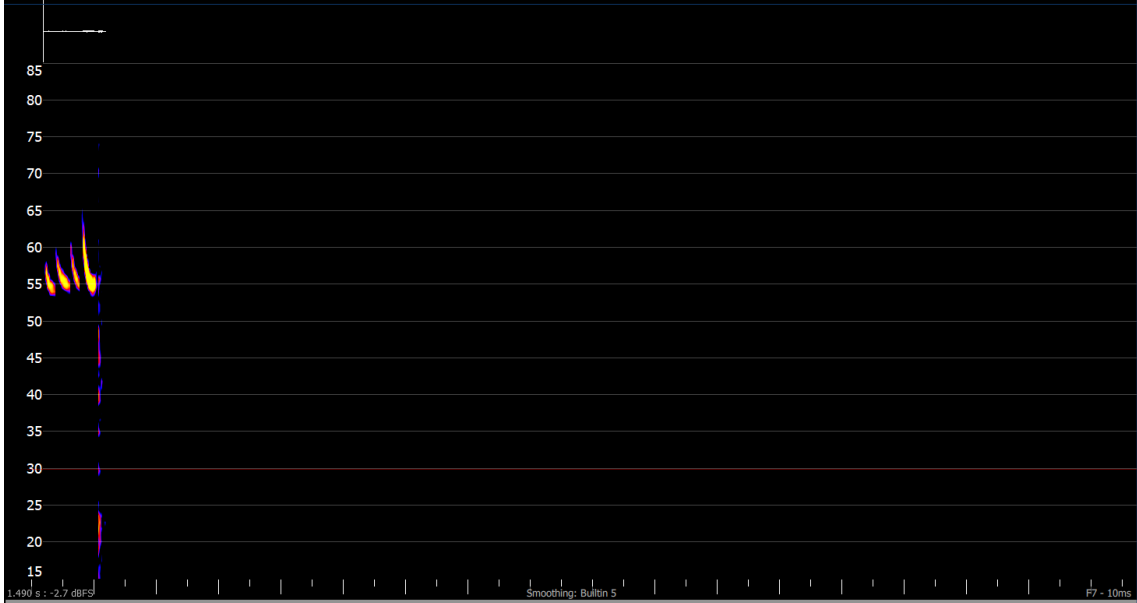


Plate 39. Fully grown common pipistrelle bat and pipistrelle bat droppings

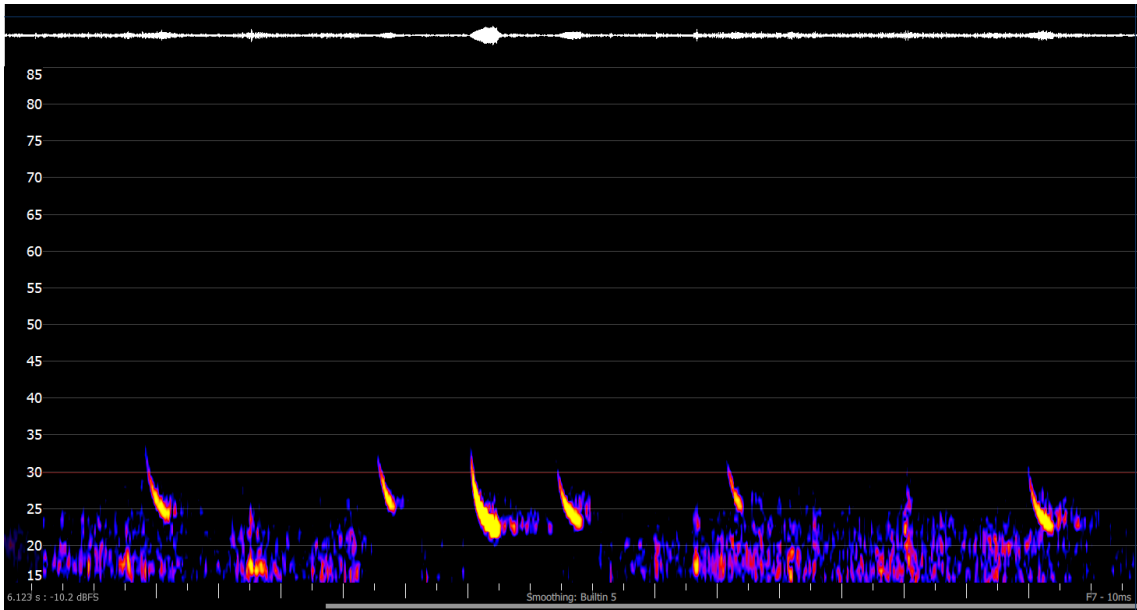
Appendix F - Sonograms



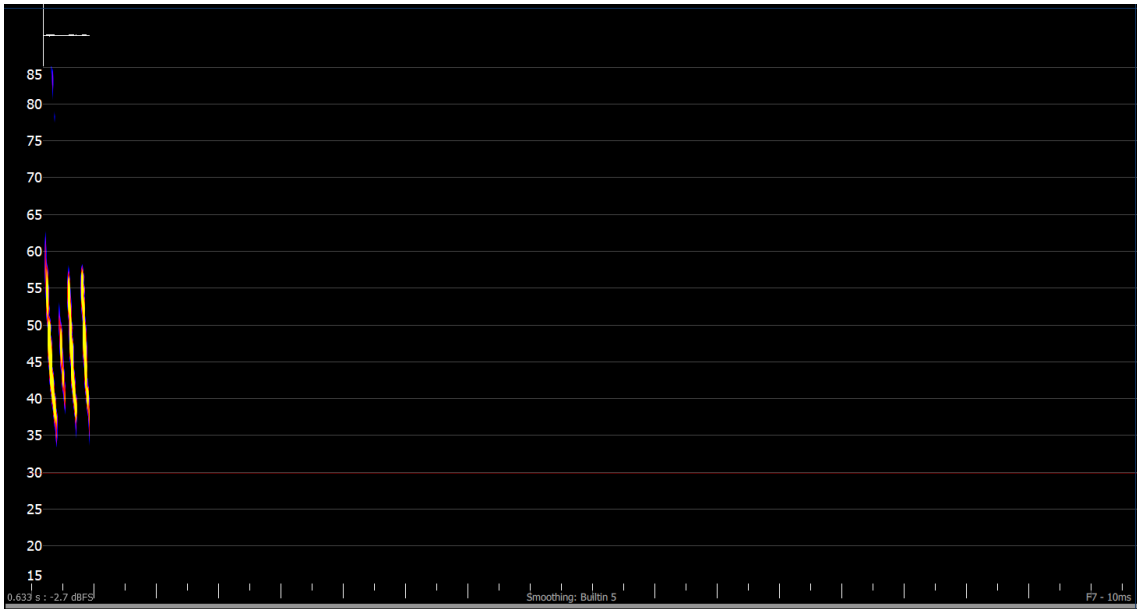
pSonogram 1. Common pipistrelle (Anabat Insight V1.9.0 / F7)



Sonogram 2. Soprano pipistrelle (Anabat Insight V1.9.0 / F7)



Sonogram 3. Noctule bat (Anabat Insight V1.9.0 / F7)



Sonogram 4. Whiskered / Brandt's (Anabat Insight V1.9.0 / F7)