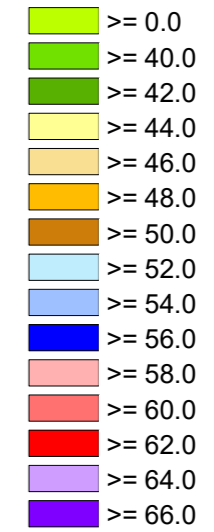
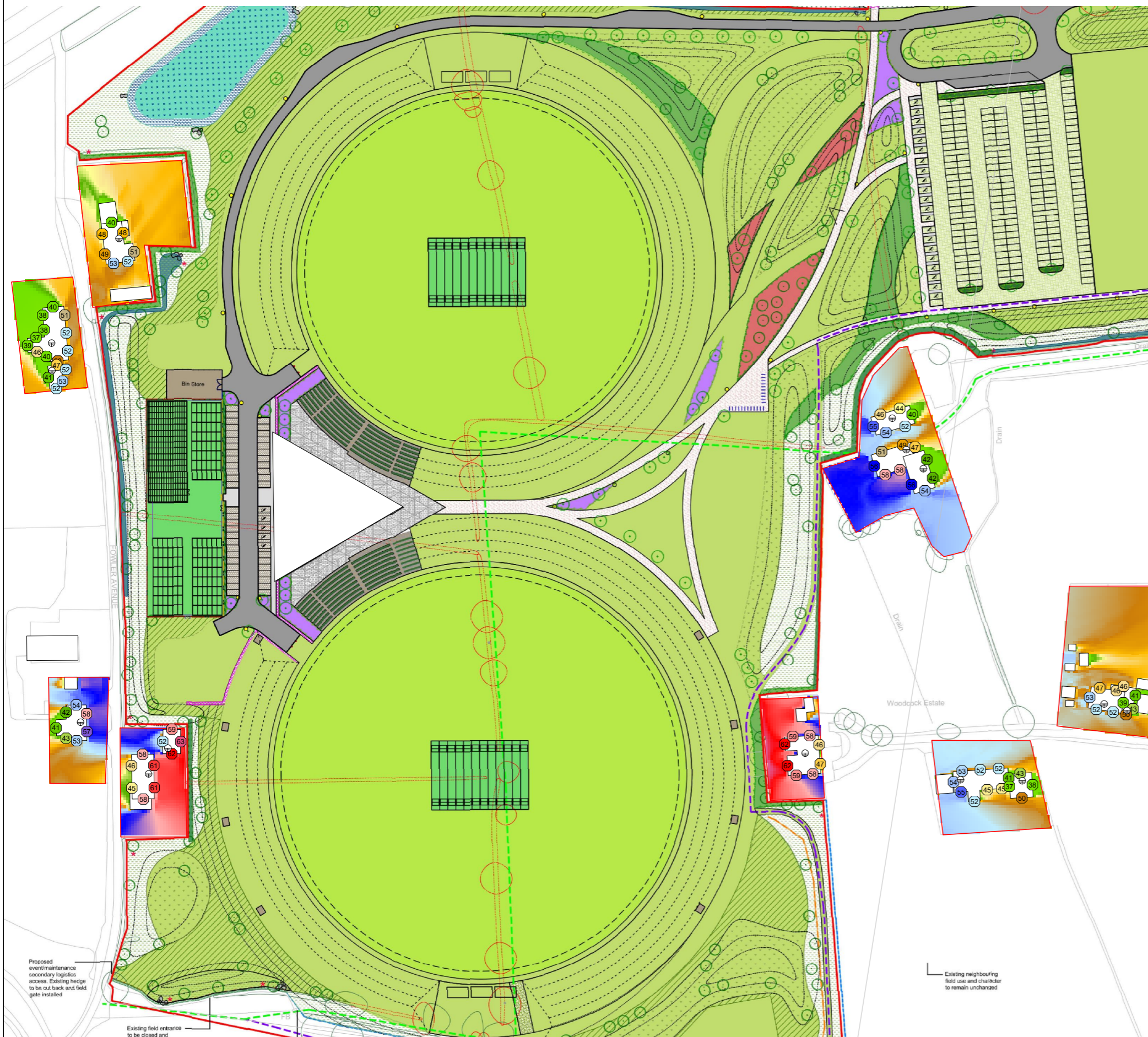


Figure B5: Proposed Cricket Facility, Farington

Typical Prematch

Predicted LAeq,1hour dBA

Typical Worst Case



Notes:

Typical Existing Daytime LAeq,t = 52dBA
 Typical Existing Daytime LA90 = 49dBA

Based on noise sources operating simultaneously all occurrences taking place during 1 hour assessment period however these may actually take place during different periods throughout the day resulting in lower levels than predicted.

See Appendix B for activity assumptions.

Proposed event/maintenance secondary logistics access. Existing hedge to be cut back and field gate installed

Existing field entrance to be closed and

Existing neighbouring field use and character to remain unchanged

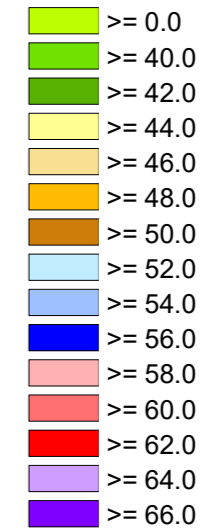


Red Acoustics Ltd
 Unit 8 Cable Court, Pittman Way, Prestron PR2 9YW
www.redacoustics.co.uk
 t: 01772 722182 e: info@redacoustics.co.uk

Figure B6: Proposed Cricket Facility, Farington

Typical Prematch

Predicted LAeq,1hour dBA
Typical Worst Case



Notes:

Typical Existing Daytime LAeq,t = 52dBA
Typical Existing Daytime LA90 = 49dBA

Based on noise sources operating simultaneously all occurrences taking place during 1 hour assessment period however these may actually take place during different periods throughout the day resulting in lower levels than predicted.

See Appendix B for activity assumptions.



Red Acoustics Ltd
Unit 8 Cable Court, Pittman Way, Prestron PR2 9YW
www.redacoustics.co.uk
t: 01772 722182 e: info@redacoustics.co.uk

