



ERIC WRIGHT CONSTRUCTION LTD

PROPOSED LANCASHIRE CRICKET FACILITY



WOODCOCK ESTATE, FARINGTON, LEYLAND

ENVIRONMENTAL NOISE STUDY

R1956-REP01C-JW

21 JULY 2022

## REPORT DETAILS

<b>Project</b>	Proposed Lancashire Cricket Facility Woodcock Estate Farrington
<b>Client</b>	Eric Wright Construction Ltd
<b>Document Reference</b>	R1956-REP01C-JW
<b>Date Issued</b>	21 July 2022
<b>Revision</b>	C
<b>Issued By</b>	Johnathan Whittle BSc (Hons), Pg. Dip. IOA AMIOA MCIEH Red Acoustics Limited Unit 8 Cable Court Pittman Way Preston PR2 9YW T: 01772 722182 F: 01772 722451 M: 07715 653281 <a href="mailto:jwhittle@redacoustics.co.uk">jwhittle@redacoustics.co.uk</a>
<b>Signed</b>	
<b>Checked By</b>	Simon Webster BEng. (Hons) MIOA
<b>Signed</b>	

The survey was conducted and this report has been prepared for the private and confidential use of Eric Wright Construction Ltd only and cannot be reproduced in whole or in part or relied upon by any third party for any use whatsoever without the express written authorisation of Red Acoustics Limited. If any third party whatsoever comes into possession of this report, they rely on it at their own risk and Red Acoustics Limited accepts no responsibility (including in negligence) to any such third party.

## SUMMARY

1. Red Acoustics Ltd has been commissioned by Eric Wright Construction Ltd, to provide an assessment of potential noise impact from the proposed cricket facility on the surrounding residential uses.
2. The assessment provides an indication of the likely noise impact associated with the use of the proposed facility under a number of scenarios to address normal day to day use of the facility as well as the proposed higher capacity ticketed events.
3. Where practicable, recommendations have been made to reduce potential noise impact on nearby noise sensitive dwellings.

# CONTENTS

<b>1.0 INTRODUCTION</b>	<b>1</b>
<b>2.0 SITE DESCRIPTION &amp; PROPOSED DEVELOPMENT</b>	<b>3</b>
<b>3.0 ENVIRONMENTAL NOISE SURVEYS</b>	<b>6</b>
<b>4.0 NOISE PROPAGATION MODELLING</b>	<b>10</b>
<b>5.0 POLICY CONTEXT &amp; ASSESSMENT GUIDANCE</b>	<b>12</b>
<b>6.0 NOISE MODELLING PREDICTION RESULTS</b>	<b>19</b>
<b>7.0 RECOMMENDATIONS</b>	<b>21</b>
<b>8.0 CONCLUSIONS</b>	<b>24</b>
<b>APPENDIX A: NOISE SURVEY DETAILS</b>	<b>25</b>
<b>APPENDIX B: CADNAA NOISE MODEL OUTPUTS</b>	<b>27</b>
<b>APPENDIX C: CADNAA NOISE MODEL ASSUMPTIONS</b>	<b>42</b>



## 1.0 INTRODUCTION

4. Red Acoustics Ltd has been commissioned by Eric Wright Construction Ltd, to provide an assessment of potential noise impact from the proposed cricket facility on the surrounding residential uses. The proposed facility is intended as both a community cricket facility and as a ground for Lancashire Cricket (LC) matches.
5. The assessment provides an indication of the likely noise impact associated with the use of the proposed facility under a number of scenarios to address normal day to day use of the facility as well as the proposed higher capacity ticketed events.
6. The scenarios considered, following discussion with the project development team, are deemed to be the typical worst cases uses. These include:
  - Typical day to day use of the facility including cars entering and leaving site, use of the cricket nets by LCCC team members, use of the main pitches for youth age group sessions and daytime use of the pavilion.
  - Typical 'match day' usage prior to commencement of the game, covering the larger (up to 5000 capacity) spectator capacity events including full use of the proposed parking facilities, coaches entering and leaving the site, the pre-match activity and associated crowd noise including PA system use.
  - Typical 'match day' usage covering the larger (up to 5000 capacity) spectator capacity events including the match playing and associated crowd noise including PA system use.

ERIC WRIGHT CONSTRUCTION LTD

ENVIRONMENTAL NOISE STUDY - R1956-REP01C-JW

7. For the purpose of the assessment, and due to the fact that some activities may take place individually or together, for differing periods of time throughout the course of a typical day (i.e cricket nets may take place during a different time period than an age group cricket training session), each scenario has been assessed to a 1 hour period with all proposed activities taking place simultaneously for a worst case assessment. Actual impact over the course of a typical 12 hour day operating time will therefore be lower than predicted.
  
8. Where practicable, recommendations have been made to reduce potential noise impact on nearby noise sensitive dwellings.

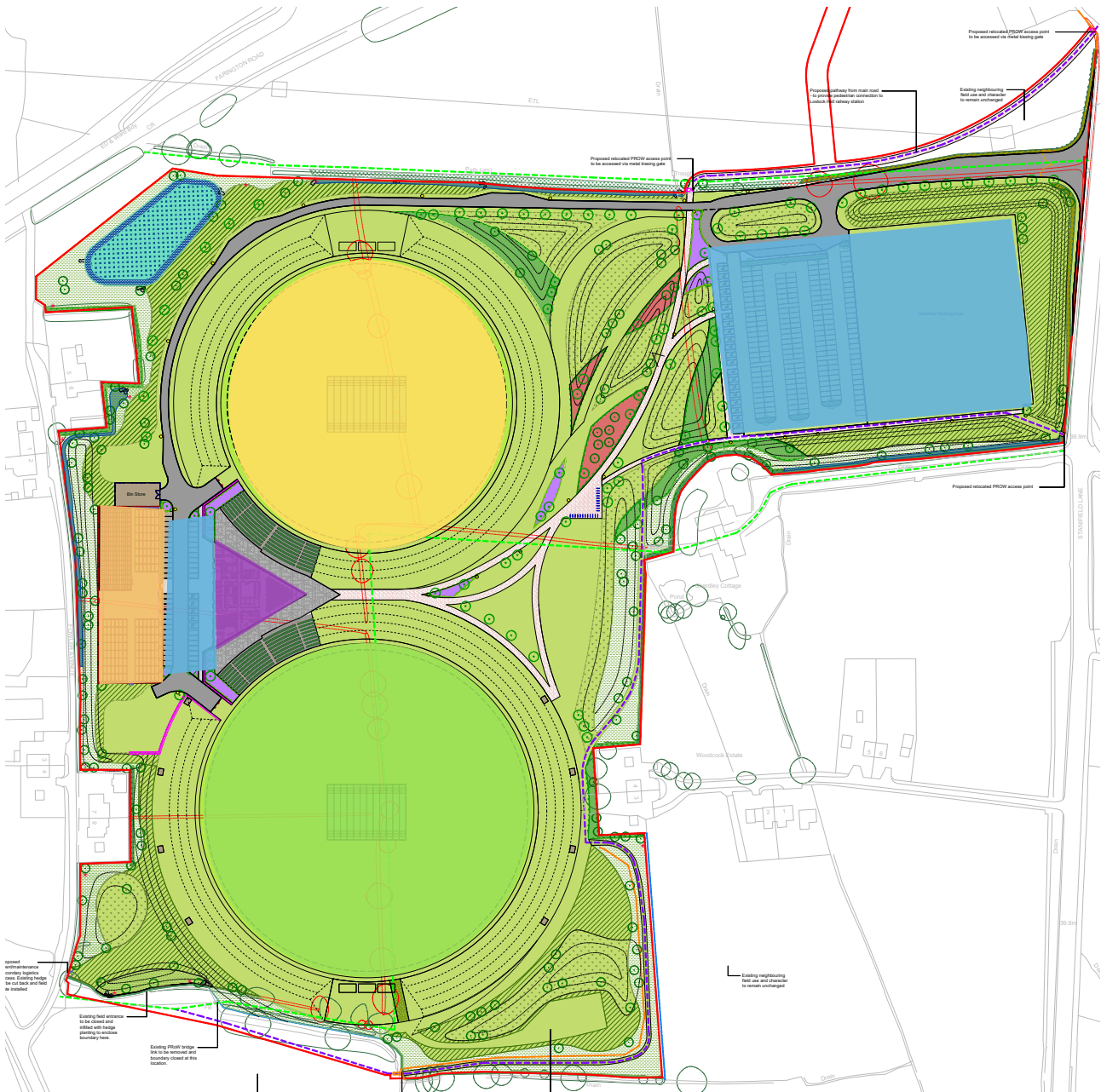
## 2.0 SITE DESCRIPTION & PROPOSED DEVELOPMENT

9. The proposal for the cricket facility is for it to be located at Woodcock Estate, Farington which is situated South of the A582 Farington Road. The A5083 Stanfield Lane partially borders the site to the East. Also bordering the site to the East are residential properties and open fields. The site is bordered to the South by open fields and to the West by open fields and residential properties on Fowler Avenue. Further residences are located to the South however the closest properties have been assessed as the nearest noise sensitive properties (NSPs). Figure 2.1 below shows the site location. Figure 2.2 below shows the proposed site layout and uses and Figure 2.3 shows the nearby noise sensitive receptors.

**Figure 2.1:** Proposed Site Location



**Figure 2.2:** Proposed Site Layout & Uses



	Car Parking Areas
	Pavillion
	Pitch 2
	Pitch 1
	Cricket Nets

**Figure 2.3:** Proposed Site Layout & Location of Nearby Noise Sensitive Properties (NSPs)

