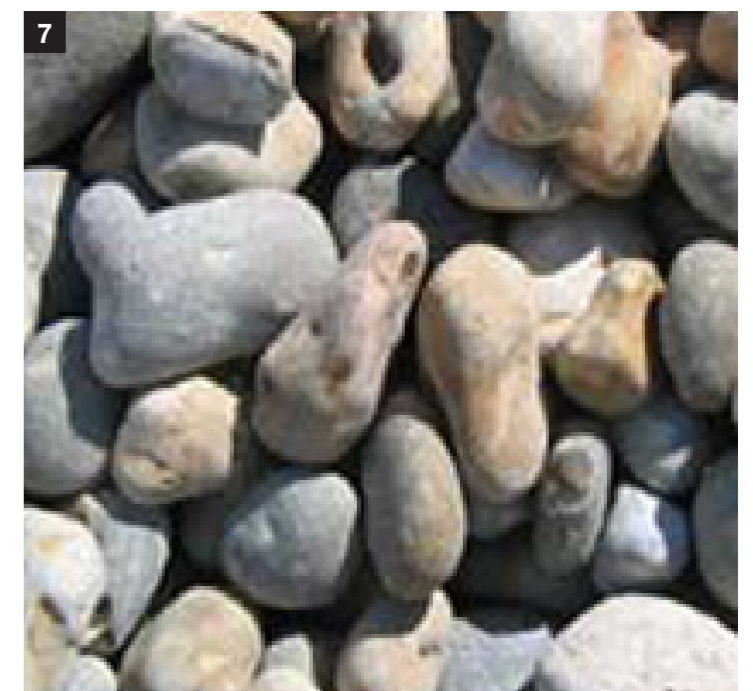
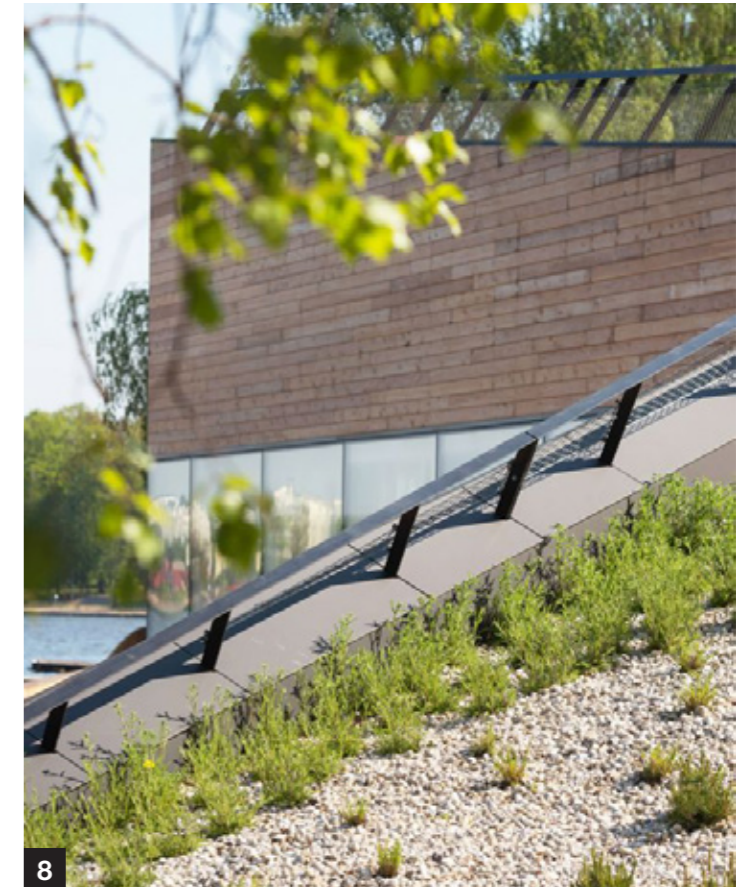


The roof surface itself is finished with rounded stone pebble ballast which further enhances the natural surface finishes which set the Pavilion building sensitively into the rural landscape setting.

External Materiality | Roofs

Finally, the roof of the Pavilion is completed with an inverted roof construction, which not only provides an extremely robust roof system, but also allows the roof surface to be completed with a stone ballast of rounded pebbles, maintaining the philosophy of utilising natural materials, colours and finishes which help the building sit comfortably and timelessly within its rural countryside setting.



External Materiality | Pavilion Views

External Envelope

The selection of views taken from the design model of the Pavilion is intended to help illustrate stylistically how this collection of materials comes together within the form of the Pavilion building, and subsequently how the building then sits in its landscaped context.



VIEW OF THE PAVILION BUILDING FROM THE SOUTH



VIEWS FROM THE PAVILION'S SOUTH ELEVATION, ILLUSTRATING THE TRANSITION FROM FUNCTION SPACE, EXTERNAL CIRCULATION AND VIEWING



VIEW FROM THE UPPER GROUND LEVEL NORTH TERRACE ALONGSIDE THE PAVILION LOOKING EAST

Appearance, Composition & Materiality

The key elements of the Pavilion building are articulated through the separation of their forms, clearly delineating each of the materials and textures. This approach helps to distil the mass of the building into three distinct horizontal layers; the stone gabion plinth, the glass and timber upper floor viewing plateau, and the gentle slope of the roof, reaching a high point at the apex of the building's simple triangular plan form.



VIEW LOOKING EAST ALONG THE SOUTH ELEVATION OF THE PAVILION ADJACENT TO THE PLAYERS ENTRANCE AND EXTERNAL VIEWING AREA



VIEW FROM THE UPPER GROUND LEVEL NORTH TERRACE LOOKING TOWARDS THE PAVILION AND LANDSCAPED SETTING

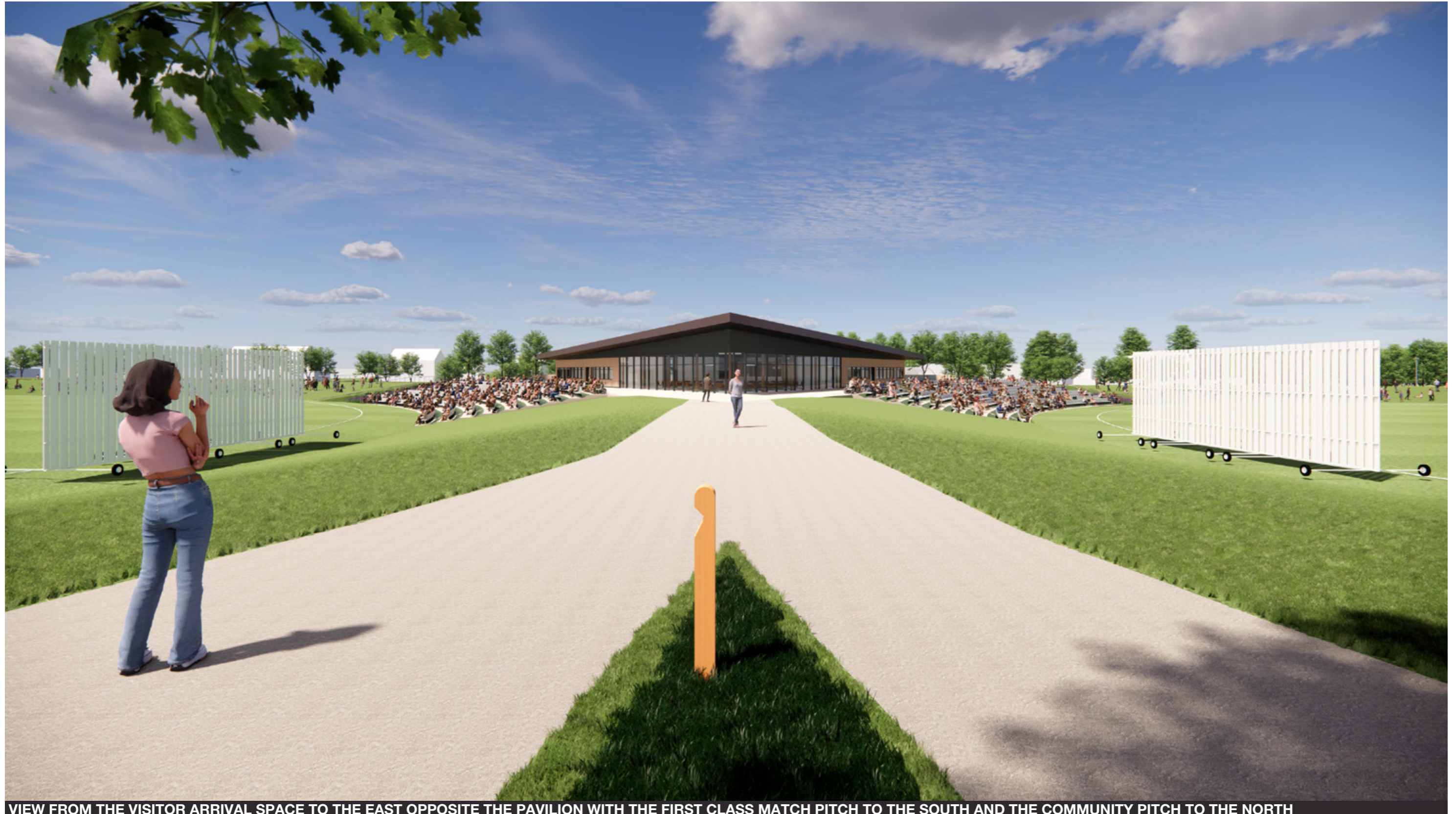
Pedestrian Routes & Entrances

The organically curved footpaths and vehicular routes which guide visitors to the Pavilion building welcome arriving guests through the green landscaped setting to the building in a sequence which sets the building at the heart of the green landscaped setting. The carefully considered approach to sensitively positions the new building within the landscaped topography and maximises distances to the landscaped boundaries with neighbouring properties whilst maintaining the site's characteristic green openness.

The building is carefully shaped with a distinctive triangular plan form to focus views out upon the core activities taking place on the two cricket pitches symmetrically arranged to the north and south of the building.



VIEW FROM THE PEDESTRIAN ARRIVAL ROUTE FROM THE VISITOR CAR PARK, LOOKING SOUTH WEST TOWARDS THE PAVILION



VIEW FROM THE VISITOR ARRIVAL SPACE TO THE EAST OPPOSITE THE PAVILION WITH THE FIRST CLASS MATCH PITCH TO THE SOUTH AND THE COMMUNITY PITCH TO THE NORTH



VIEW FROM THE NORTH-WEST OF THE VIEWING BOWL OF THE FIRST CLASS PITCH, LOOKING NORTH EAST TOWARDS THE PAVILION



VIEW TO THE WEST OF THE PAVILION LOOKING SOUTH TOWARDS THE TEAM AND STAFF ARRIVAL SPACE AND CAR PARKING

5.3 External Practice Nets

The external practice nets are, in addition to the Pavilion building, the only other significant built structure proposed on the site. The practice area comprises 12 practice wickets, of which 3 are sheltered from the elements utilising a proprietary system of enclosure which supports the individual pitch net systems, and encloses the wickets in question under an arched polycarbonate roof canopy.

The location of the practice of the external practice area has been developed in careful consideration of the surrounding context and site topography, along with optimising operational functionality in consultation with both Lancashire Cricket and the England and Wales Cricket Board (ECB). Following assessment of the key performance criteria, the proposed positioning of the external practice nets locates the facility opposite the Pavilion building's lower ground floor entrance.

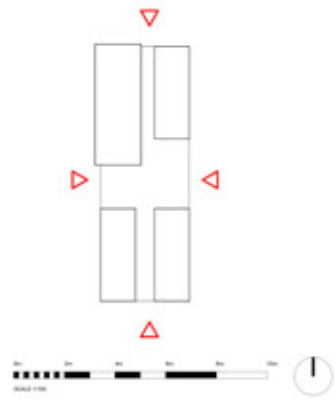
This location provides excellent accessibility for all users of the facilities, connecting with the internal cricket training facilities within the Pavilion building and providing good access to both pitches. A pedestrian crossing point allows safe access via the Pavilion arrival space and team car parking, and crucially, also affords excellent visibility for staff and coaches looking after younger players.

From a design perspective this location is also excellent from the point of view that positioning of the net structures nearby the Pavilion building keeps the new built forms closely contained, helping maximise and maintain the characteristic green openness of the wider site. Furthermore, connection with the Pavilion's sunken lower ground level means that the net structures can also be neatly nestled into the site's sloped topography. In combination with proposed landscaping, setting the net structures circa 1.5m below the level of Fowler Avenue significantly diminishes their relative height and visibility.

The steel framing structures of the nets and canopy will be coloured silver to blend with the natural light tones of the timber fenced enclosure and natural materials of the Pavilion building. The nets sit within an overall enclosure, and metal fencing to the east elevation facing the Pavilion will also be matched in colour with the steel nets structure. The overall setting is then enclosed on the other three sides within a sloped enclosure and a tall solid timber fenced visual and acoustic screen designed to contain the activities within, and maintain privacy. Beyond the sloped landscaped enclosure, new trees and soft landscaping enhance existing retained hedges and landscape features to create a natural green setting in character with the wider local landscape.

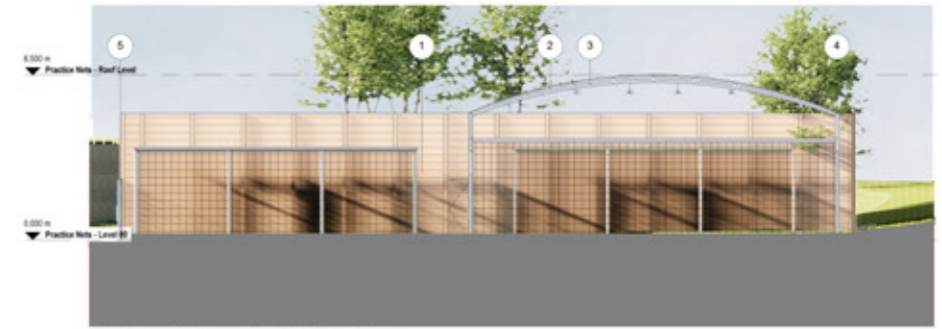
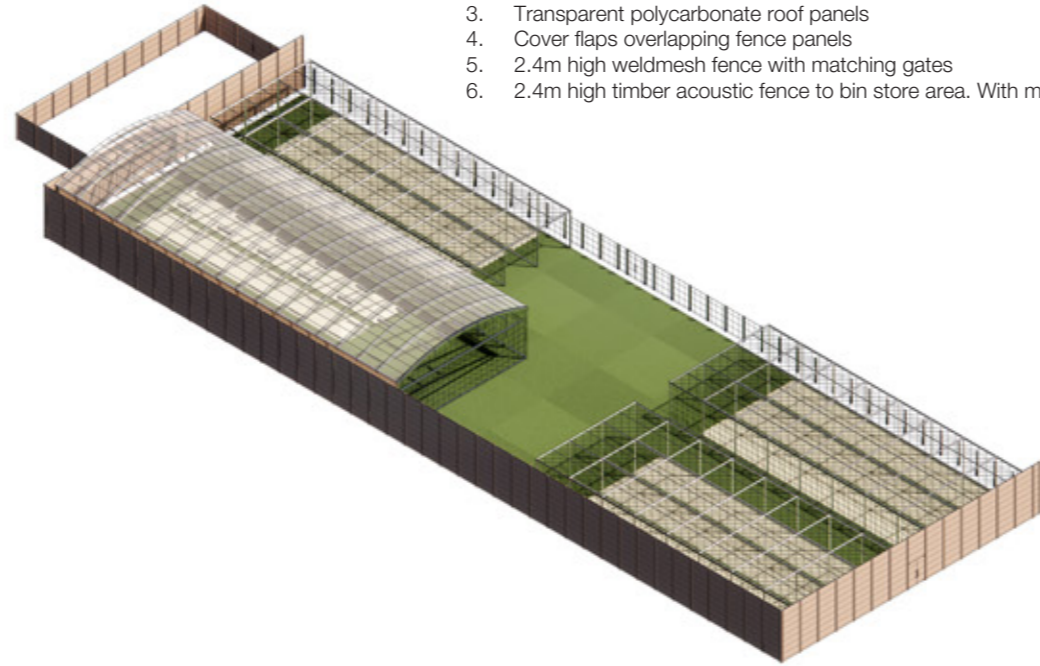


EXTERNAL COVERED NETS VIEWS OF THE ENCLOSURE

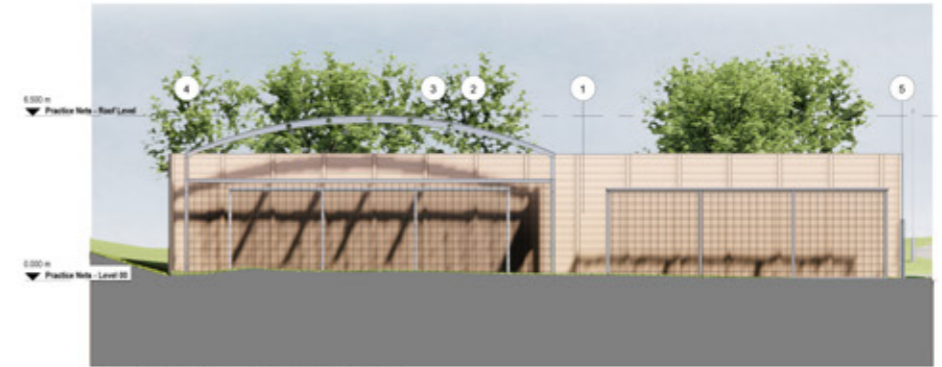


MATERIAL KEY

- 1. 5m high timber acoustic fence to practice nets area
- 2. Painted steel portal frame
- 3. Transparent polycarbonate roof panels
- 4. Cover flaps overlapping fence panels
- 5. 2.4m high weldmesh fence with matching gates
- 6. 2.4m high timber acoustic fence to bin store area. With matching vehicle gate



Practice Nets - North Elevation
1 : 100



Practice Nets - South Elevation
1 : 100



Practice Nets - East Elevation
1 : 100



Practice Nets - West Elevation
1 : 100



FOWLER AVENUE

PRACTICE NETS

VISITOR & STAFF PARKING

PAVILION

PROPOSED SITE SECTION THROUGH THE PAVILION BUILDING AND PRACTICE NETS LOOKING NORTH



VIEW FROM WITHIN THE PRACTICE NETS LOOKING EAST TOWARDS THE PAVILION

5.4 Schedule of Areas

Pavilion Area Schedule - Net

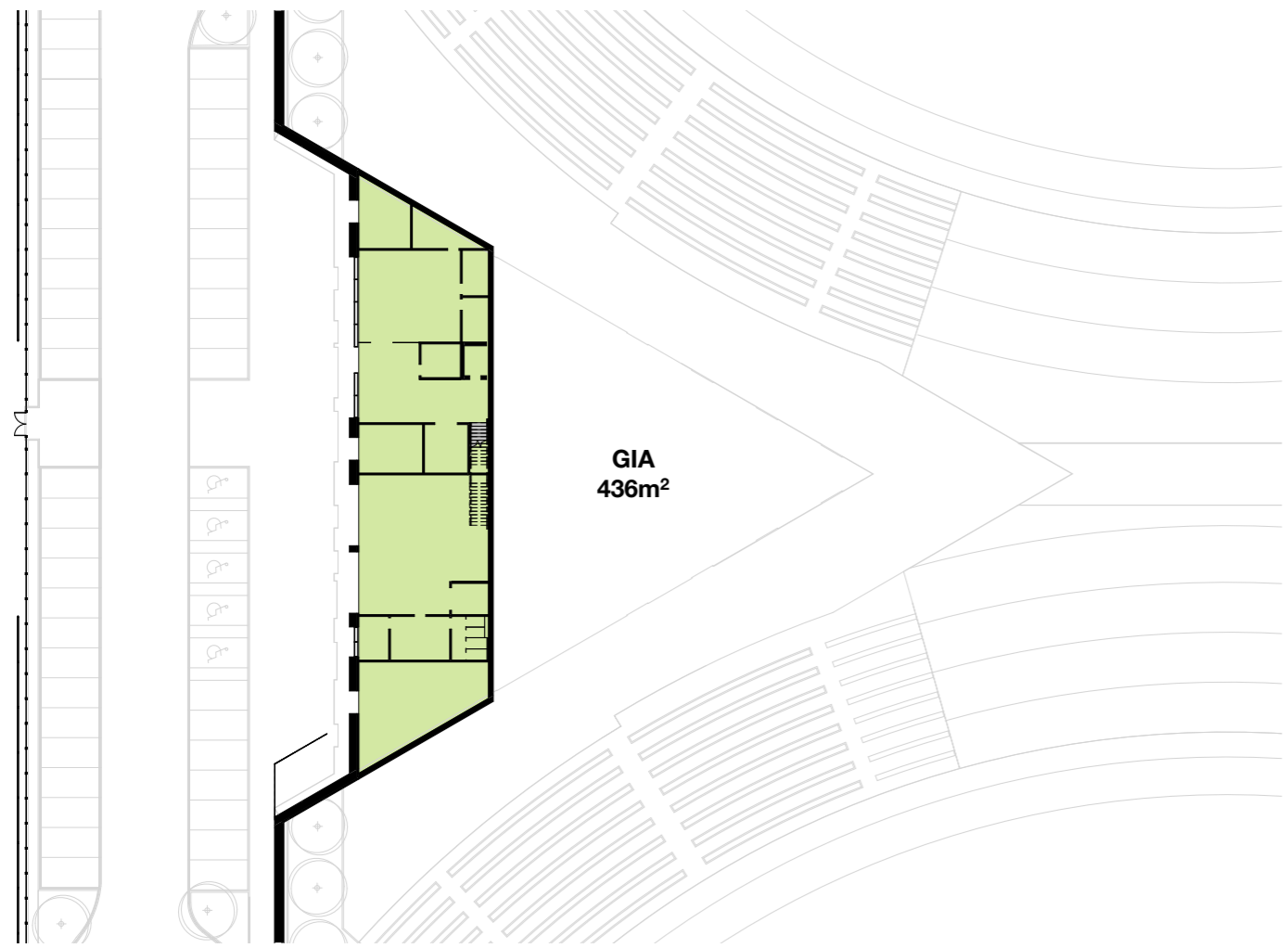
Upper Ground Floor		
Department	Name	Net Internal Areas
Bar & Kitchen	Bar Store	10
Bar & Kitchen	Bar	16
Bar & Kitchen	Kitchen	43
Circulation	Lift	4
Circulation	Circulation	132
Multifunctional Space	Players Dining	63
Multifunctional Space	Multifunctional Space	270
Officials	Officials Changing	7
Officials	Officials Changing	7
Officials	Officials Changing	7
Officials	Officials Changing	7
Officials	Officials Match Room	15
Officials	Officials Lounge & Dining	27
Players & Changing	Attendant Store	5
Players & Changing	Coach Changing	7
Players & Changing	Team Changing 4 & Doping Control	31
Players & Changing	Team Changing 1	39
Players & Changing	Team Changing 2	39
Players & Changing	Team Changing 3	40
Staff	Studio	7
Staff	Scorer Base	8
Staff	First Aid	15
Staff	Physio	19
Store	Cleaner Store	3
Store	Cold Store	6
Store	Dry Store	6
Store	Frz Store	6
Store	Store	9
WC	Accessible WC (Changing Places)	12
WC	Team WC & Shower 4	13
WC	Team WC & Shower 3	17
WC	Team WC & Shower 1	17
WC	Team WC & Shower 2	17
WC	Male WC	17
WC	Female WC	20
Totals - Upper Ground Floor		961m²

Pavilion Area Schedule - Net

Lower Ground Floor		
Department	Name	Net Internal Areas
Circulation	Lift	5
Circulation	Circulation	43
Groundskeeping	Groundskeeping Fuel Store	7
Groundskeeping	Groundskeeping Vehicle Garage	95
Plant	Comms	7
Plant	Plant	62
Players & Changing	Gym	62
Staff	Reception Office	8
Staff	Groundskeeping Office	9
Staff	Groundskeeping Change	10
Staff	Logistics Store	13
Staff	Groundskeeping Materials Store	13
Staff	Reception	16
Staff	Groundskeeping Mess	17
Staff	Incoming Services	20
Store	Gym Equipment Store	8
Store	Cricket Equipment	10
Store	Cellar	20
Totals - Lower Ground Floor		425m²
Net Total		1386m²

Area Schedule - Gross Internal Area

Level	GIA
Lower Ground	436m ²
Upper Ground	1008m ²
Practice Nets	0m ²
Total	1,444m²



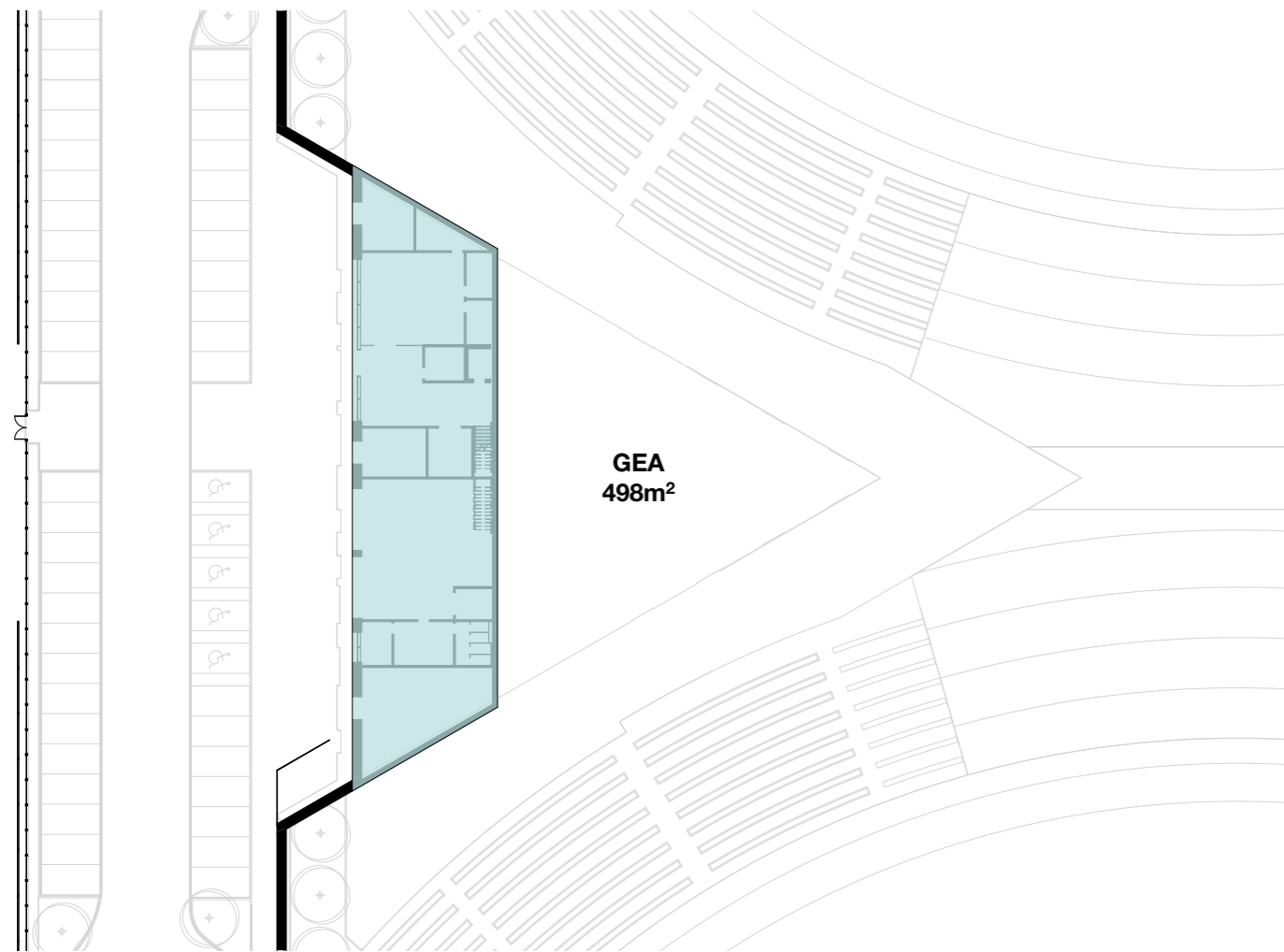
Lower Ground



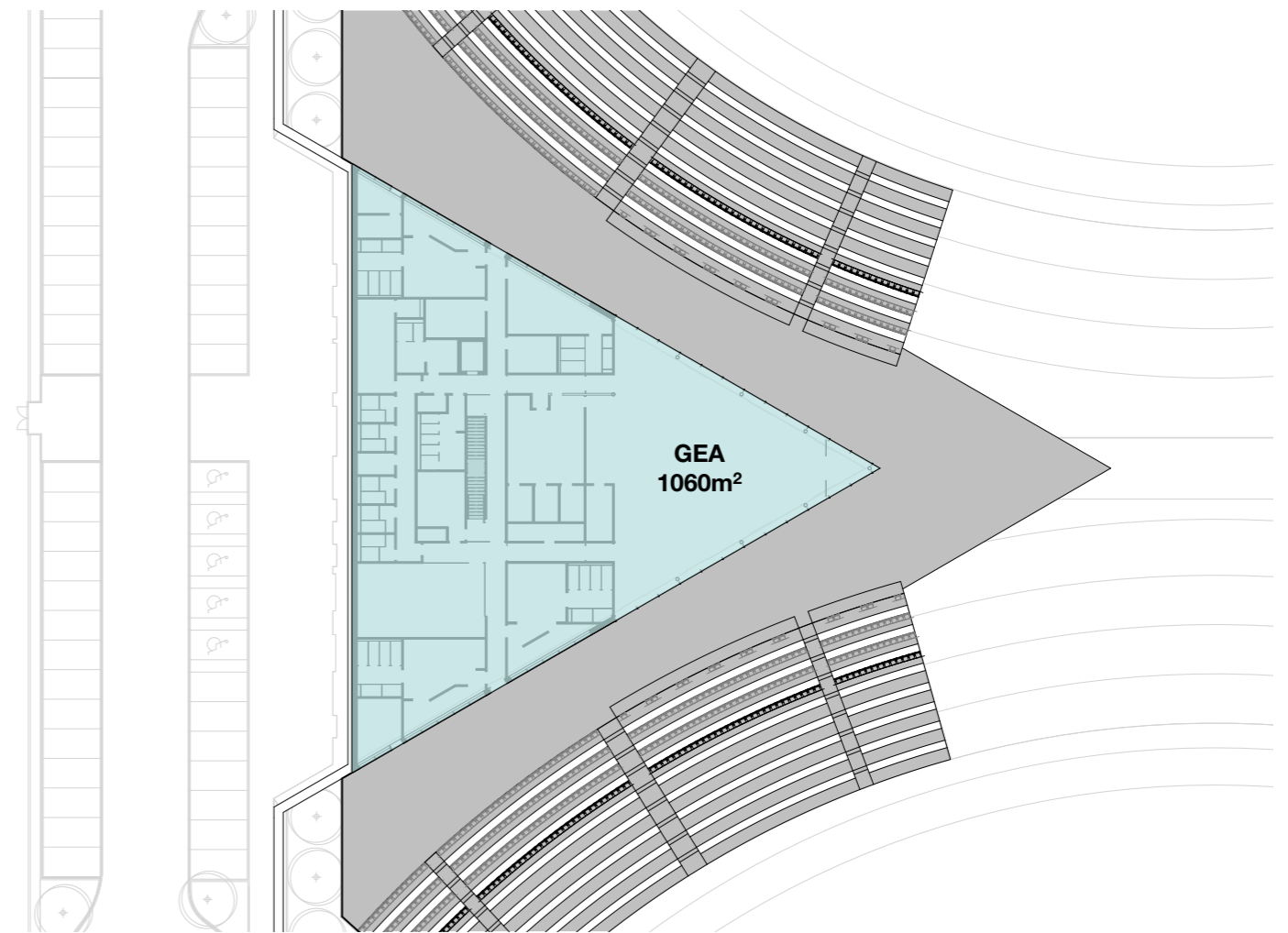
Upper Ground

Area Schedule - Gross External Area

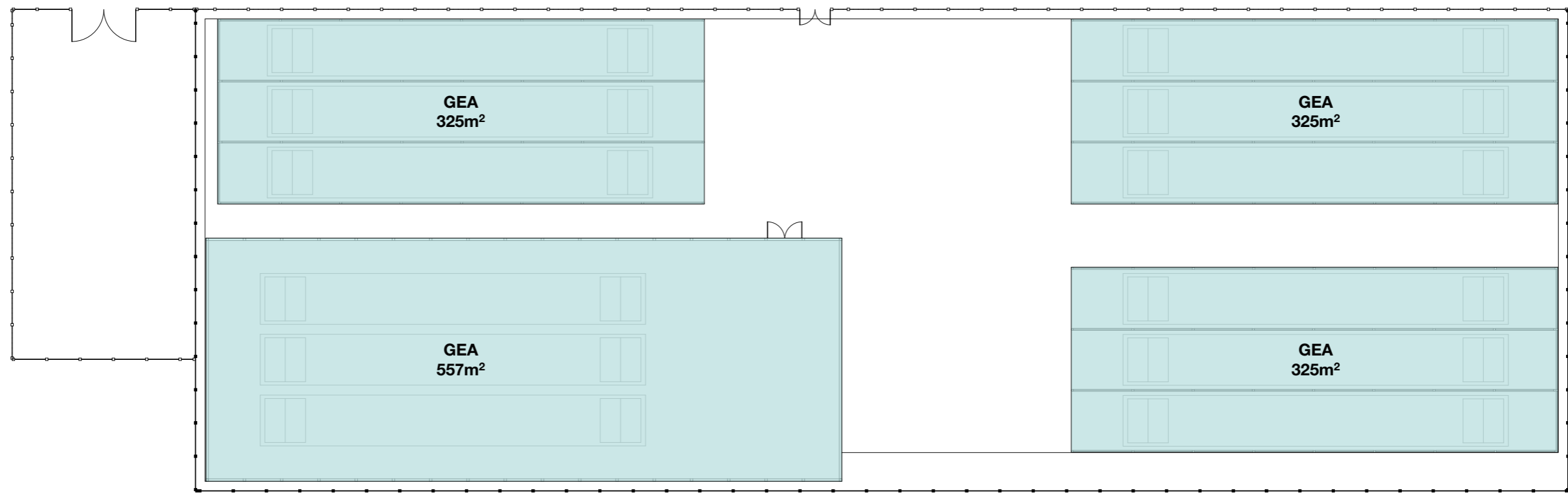
Level	GEA
Pavilion Lower Ground	498m ²
Pavilion Upper Ground	1060m ²
Practice Nets	1,532m ²
Total	3090m²



Pavilion Lower Ground



Pavilion Upper Ground



Practice Nets

Key Facts & Figures

EXTERNAL GROUNDS AND FACILITIES				
Function	Capacity / Length / Diameter	Width	Other Dimensions	Notes
First Class County Pitch	160m	-	150m (75m rad) boundary	12 wicket square, incorporating 4 primary central first class wickets, with remaining wickets suitable for second eleven cricket.
Community and Academy Pitch	140m	-	130m (65m rad) boundary	12 wicket square, for community, academy and women's teams.
External Practice Nets	81m	22m		12 wicket external practice area, including 3 sheltered wicket enclosure and central shared run-up zone.
Scoreboard	Event specific	-		Free standing scoreboard structure provided within event overlay.
Sight Screen and Covers	-	-	Coverage for 12 wickets	Sight screens and covers provided in accordance with ECB requirements.
Grounds Maintenance Working Area	35m	35m		General external grounds maintenance working space (open area)
Logistics Compound / Holding Space				Deliveries, logistics and handling of waste and recycling - sensitively screened location with vehicular access to rear of Pavilion.
Staff and Team Car Parking	50 spaces	-		Located to the rear of the Pavilion building, providing for day to day core use by teams and staff.
Team Coach Parking / Drop Off	2 coaches	-		Coach drop off to rear of Pavilion building.
Visitor Arrival / Activation Space				Pedestrian arrival space within landscape, along with visitor information and way-finding.
Visitor Car Parking	265 spaces			For further details of travel and transportation strategy, please refer to the Transportation Assessment authored by WSP.
Event Day Overflow Car Parking	235 spaces			For further details of travel and transportation strategy, please refer to the Transportation Assessment authored by WSP.
Outside Broadcast Media				Open green space adjacent overflow car parking is provided to cater for this requirement if needed, enclosed within landscaped setting.
Public Rights of Way	-	2m	Match exg footpath width	Refer to details within the site landscape plan illustrating the adjustments and retention of existing routes.

EXTERNAL SPECTATOR VIEWING				
Function	Area (m ²)	Occupancy	Space Standard	Notes
Pitch 1 - First Class County Pitch				
Pitch 1 - Pavilion Viewing Deck	400	260	1.5	Level informal viewing area adjacent to Pavilion
Pitch 1 - Pavilion Viewing Terrace	500	740	0.75	Tiered viewing terrace adjacent to Pavilion, providing formal seated viewing.
Pitch 1 - Embankment	6,000	4,000	1.5	Sloped viewing embankment to pitch perimeter (viewing slope and level viewing areas at the top of slope), providing more informal spectator viewing.
Pitch 1 - Spectator Viewing Capacity Total		5,000		
Pitch 2 - Community & Academy Pitch				
Pitch 2 - Pavilion Viewing Deck	400	260	1.5	Level informal viewing area adjacent to Pavilion
Pitch 2 - Pavilion Viewing Terrace	500	740	0.75	Tiered viewing terrace adjacent to Pavilion, providing formal seated viewing.
Pitch 2 - Embankment	4500	3000	1.5	Sloped viewing embankment to pitch perimeter (viewing slope and level viewing areas at the top of slope), providing more informal spectator viewing.
Pitch 2 - Spectator Viewing Capacity Total		4,000		Note: The viewing capacity of the sloped viewing areas of the community pitch is theoretical, and is never likely to reach these levels of occupancy.

PAVILION BUILDING	
Scale of Key Elements	Notes
Pavilion Building	The building footprint measures 43.0m from rear to prow in the east-west direction, and 49.5m along each edge of the triangular plan form.
Pavilion Roof	The roof overhangs the building footprint by circa 2.5m to provide shade and shelter to the north and south elevations, and measures 48.0m in the east-west direction from rear to prow, 55.7m along each edge of the triangular plan form.
Relative Height and Levels	The roof of the building slopes at 2.5 degrees from a high point to the east which is 6.4m above upper ground level, and a low point to the west 4.3m above upper ground level. The low point of the roof coincides with the building's rear (west) elevation which is the only visible two storey elevation of the building. The roof here is 4.3m above upper ground level, and 8.3m above lower ground level. However, the new lower ground level is sunken into the existing ground level by between 2 and 3m, meaning that the relative roof level in this location is between 5.3 and 6.3m (effectively 1½ storeys) above the existing ground level.
Distance to Neighbouring Properties	The Pavilion building is located over 65m away from the nearest neighbouring property.



PROPOSED SITE GEOMETRY PLAN

5.5 Sitewide Views



ELEVATED VIEW FROM THE NORTH-WEST LOOKING OVER THE BALANCING POND AND BIO-DIVERSE HABITAT IN THE FOREGROUND, WITH THE CRICKET GROUND'S LANDSCAPED SETTING BEYOND



ELEVATED VIEW FROM THE NORTH WEST LOOKING SOUTH-EAST TOWARDS THE PAVILION AND VIEWING TERRACES WITH THE WEST ARRIVAL SPACE AND PRACTICE NETS IN THE FOREGROUND



VIEW LOOKING ALONG THE NEW FOOTPATH LINKING LOSTOCK HALL TO THE NORTH, WITH CAR PARKING AND VISITOR DROP OFF SET WITHIN A LANDSCAPED SETTING ALONGSIDE STANIFIELD LANE



VIEW FROM THE EAST OF THE LANDSCAPED SETTING FOR VISITOR CAR PARKING AREA, WITH FOOTPATHS LINKING THE PAVILION AND PITCHES TO THE WEST



VIEW FROM THE SOUTH OF THE FIRST CLASS MATCH PITCH LOOKING NORTH ALONG THE CENTRAL AXIS OF THE PITCHES



VIEW FROM PITCH SIDE BOUNDARY OF THE GREEN SPECTATOR VIEWING BOWL TO THE EAST OF THE FIRST CLASS MATCH PITCH



VIEW FROM UPPER LEVEL OF THE GREEN SPECTATOR VIEWING BOWL TO THE EAST OF THE DEVELOPMENT AND COMMUNITY PITCH LOOKING SOUTH-EAST