

Functional Relationships Diagram

The lower ground level is conceived as forming a 'plinth' upon which the upper ground level of the building is located. This approach helps to articulate the key elements of the form and reduce the apparent scale of the building, expressing the hierarchy of levels and construction.

Lower Ground Level

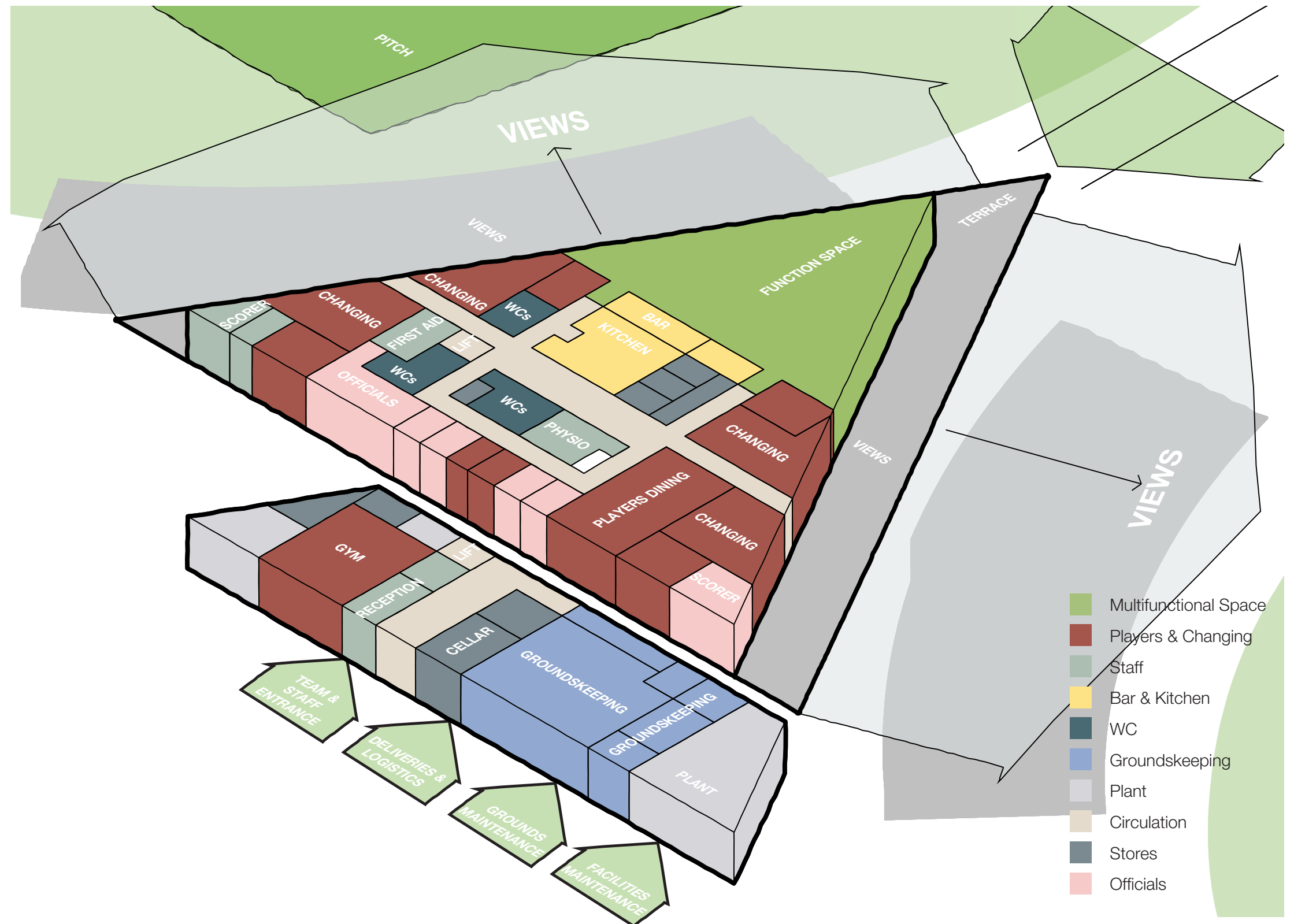
At the lower ground level, a central reception welcomes teams and members of staff within the core day-to-day user groups, with access to the upper ground functions provided via a central stair and lift are the heart of the building's plan. In addition, a base and equipment working area for the grounds maintenance team along with access to various other key service functions enables efficient accessibility, along with direct routes to each of the two pitches, and external practice nets.

Upper Ground Level

At upper ground level, a central circulation and service function core with kitchen, bar, toilets and storage is linked between upper and lower ground levels via the central stair and lift. These core functions and circulation also act as a natural control point for secure separation of players, match officials, guests and visitors.

The north, south and west of the central core are wrapped with the key cricket functions of the building including four dressing rooms, players lounge, physiotherapy and first aid rooms, and a suite of match day officials and other support accommodation. The scorer and dressing room functions address the pitches to the north and south elevations, connecting with external viewing terraces for each of the teams.

Completing the composition, the west side of the central core leads to the apex of the triangular plan form, allowing the creation of a unique dual-aspect multi-functional hospitality space which accommodates 160 seated guests for hospitality and dining, and enjoys enviable views out over both the venue's cricket pitches, and the green landscaped setting beyond.



The Pavilion | Floor Plans

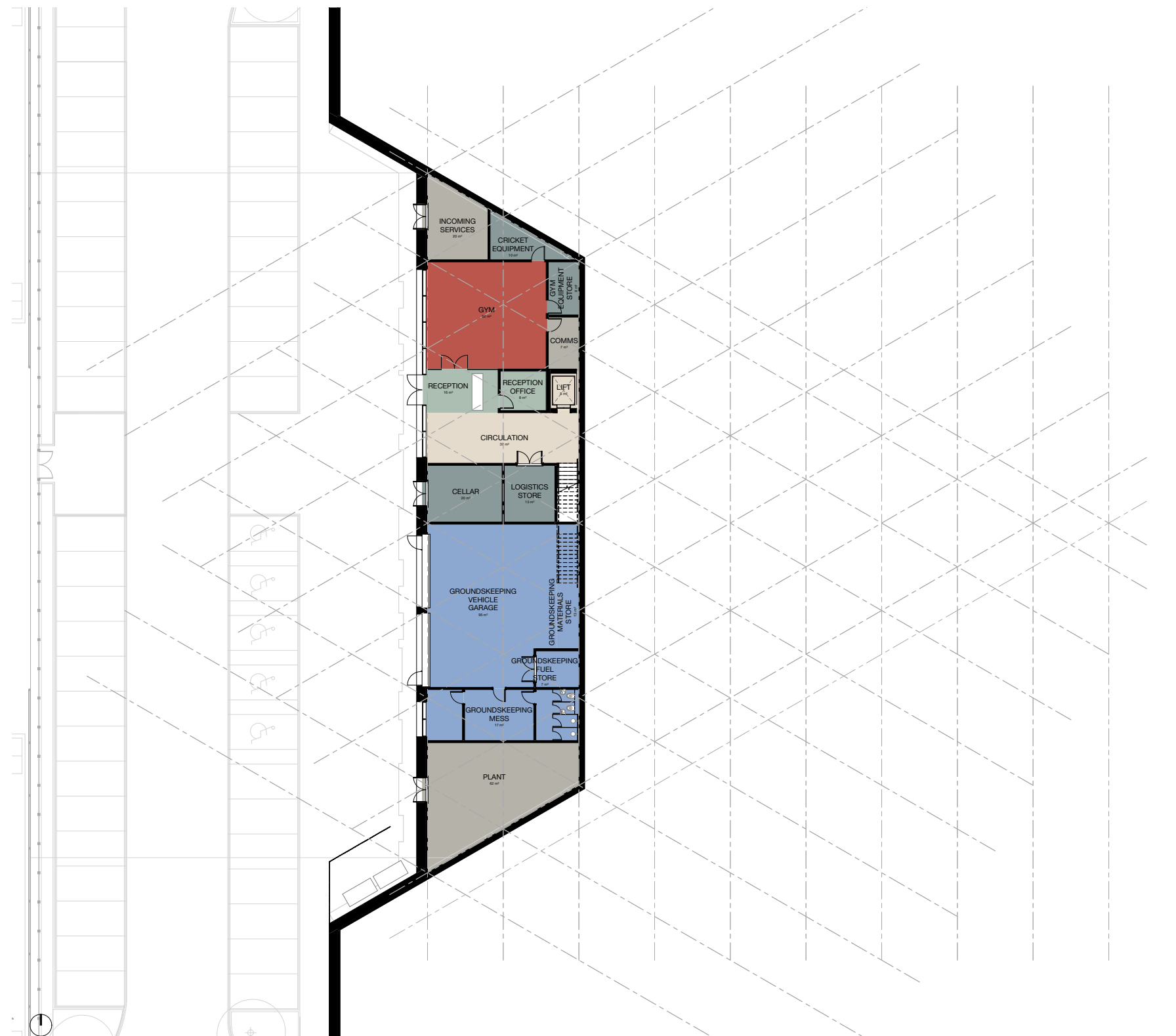
Lower Ground Floor

Key elements of the lower ground floor plan include:

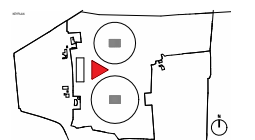
- Team and staff entrance and reception
- Central circulation core with stairs and lift
- Office
- Logistics store
- Cellar
- Gym and associated storage
- Cricket equipment storage
- Grounds maintenance office, mess and changing
- Grounds equipment garage and storage
- Incoming services / switch room
- Mechanical and electrical plant

Direct access is provided to the lower ground floor from the small car park and arrival space to the rear of the Pavilion building, which provides 50 car parking spaces including 5 accessible car parking bays. Turning space is also provided to allow drop off by team coaches.

Beyond the car park, a landscape screened external logistics compound provides space for deliveries and waste handling and recycling. A pedestrian crossing provided direct access between the Pavilion building and the external practice nets area. This linkage is important in terms of player training functionality, and provides good visibility for coaches looking after younger age groups. The practice area is set within a landscaped screened enclosure which visually and acoustically contains the activities within the practice space, maintaining privacy.

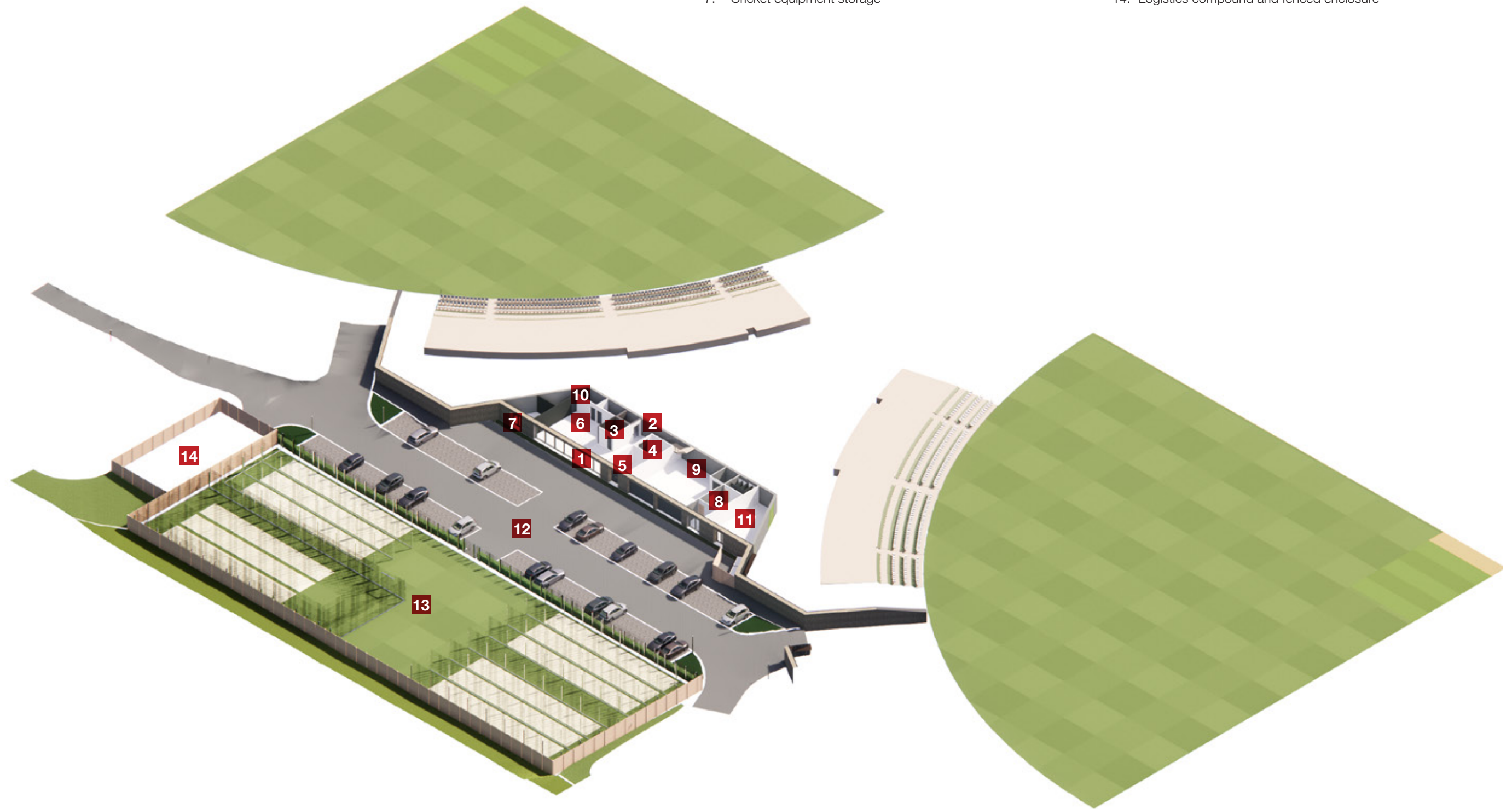


LOWER GROUND FLOOR PLAN



- 1. Team and staff entrance and reception
- 2. Central circulation core with stairs and lift
- 3. Office
- 4. Logistics store
- 5. Cellar
- 6. Gym and associated storage
- 7. Cricket equipment storage

- 8. Grounds maintenance office, mess and changing
- 9. Grounds equipment garage and storage
- 10. Incoming services / switch room
- 11. Mechanical and electrical plant
- 12. Arrival space, car parking and team drop-off
- 13. External practice nets and fenced enclosure
- 14. Logistics compound and fenced enclosure



LOWER GROUND FLOOR AXONOMETRIC VIEW

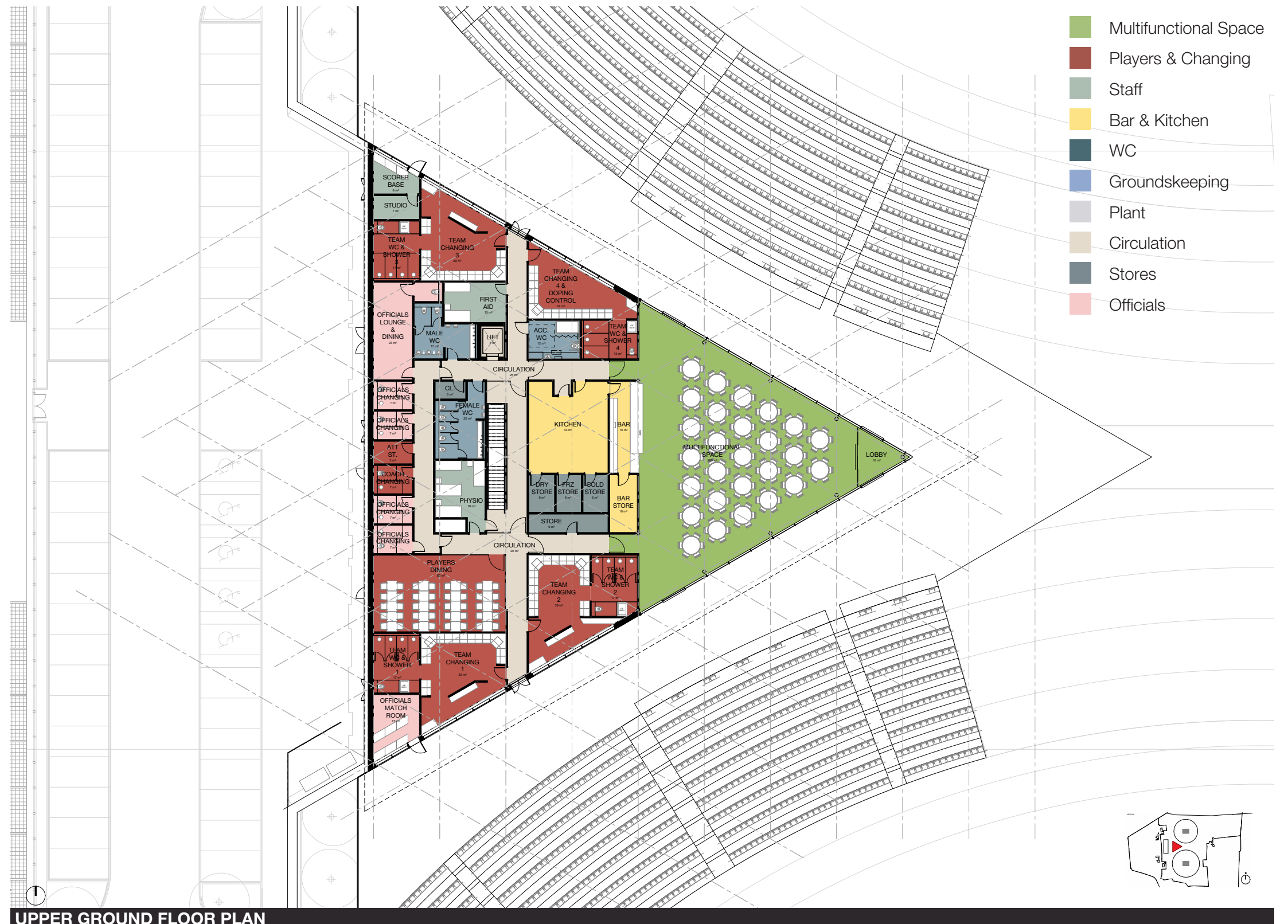
Upper Ground Floor

Key elements of the upper ground floor plan include:

- Central circulation core with stair and lift
- Function space for 160 seated guests
- Bar and associated storage
- Kitchen with associated cold and dry storage
- Public WCs
- Changing places accessible facilities
- First aid room
- Physiotherapy treatment room
- Dressing rooms for four teams, including changing space and lockers, match viewing and padding up space, analyst position, showers and WC.
- Scorers and officials viewing
- Players lounge and dining space for 40 people
- Match officials changing and lounge
- Coach changing and attendant storage
- Space for anti-doping function
- Media content creation studio

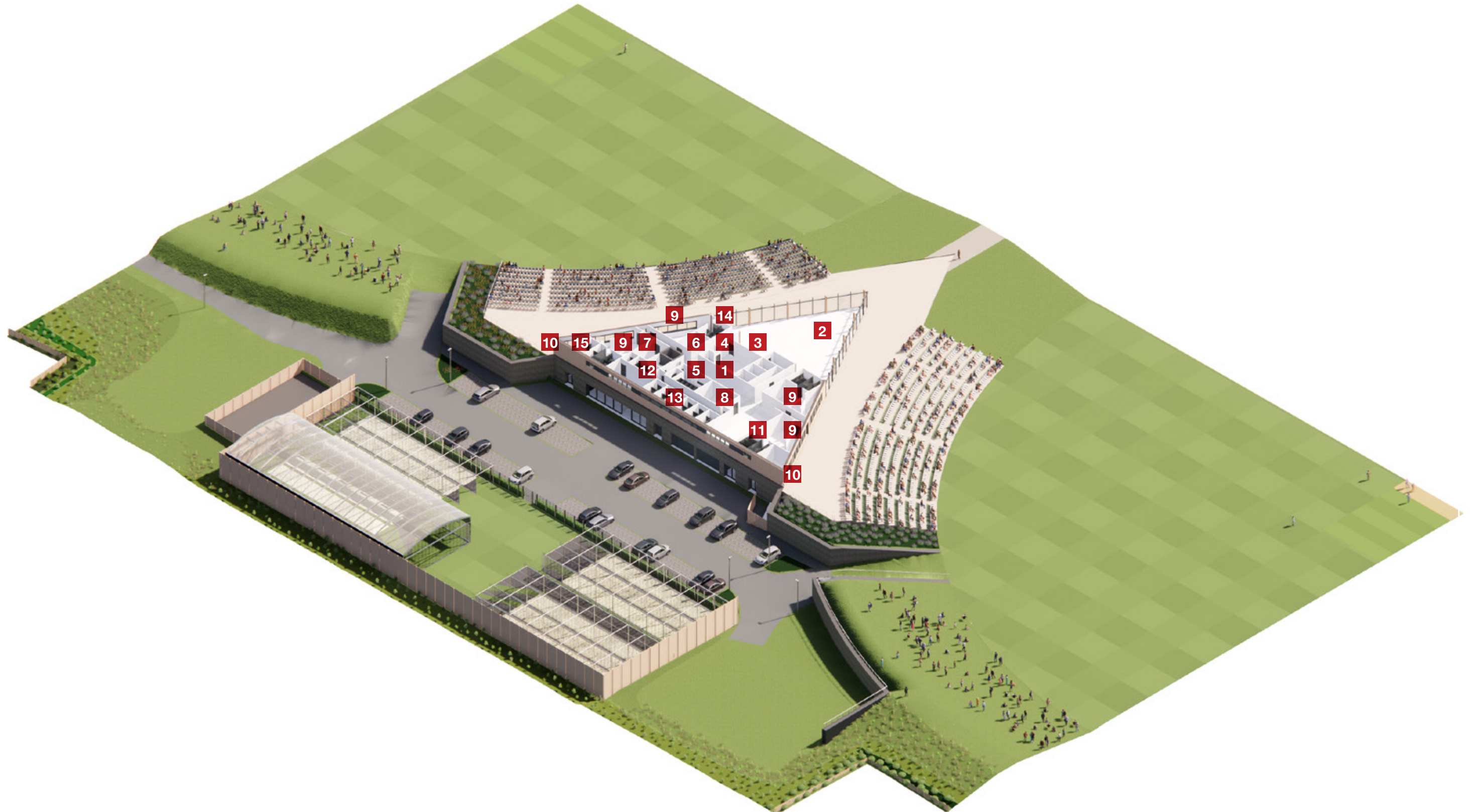
The spaces on the upper ground level are connected to the team and staff arrival, and the external practice nets area at lower ground level via the central circulation core at the heart of the building plan. This central hub also provides a secure control point for players and officials access during first class cricket matches. Circulation at the rear of the building allows separation of the public and private functions of the building, whilst a central circulation spine running along the north-south axis leads players from the dressing rooms out to their external viewing areas and the pitches on either side of the Pavilion.

Public access for visitors arriving from the main car parking and arrival space is provided at the prow of the Pavilion building, with a glazed lobby welcoming guests into the function space.



UPPER GROUND FLOOR PLAN

- 1. Central circulation core with stair and lift
- 2. Function space for 160 seated guests
- 3. Bar and associated storage
- 4. Kitchen with associated cold and dry storage
- 5. Public WCs
- 6. Changing places accessible facilities
- 7. First aid room
- 8. Physiotherapy treatment room
- 9. Dressing rooms for four teams, including changing space and lockers, match viewing and padding up space, analyst position, showers and WC.
- 10. Scorers and officials viewing
- 11. Players lounge and dining space for 40 people
- 12. Match officials changing and lounge
- 13. Coach changing and attendant storage
- 14. Space for anti-doping function
- 15. Media content creation studio

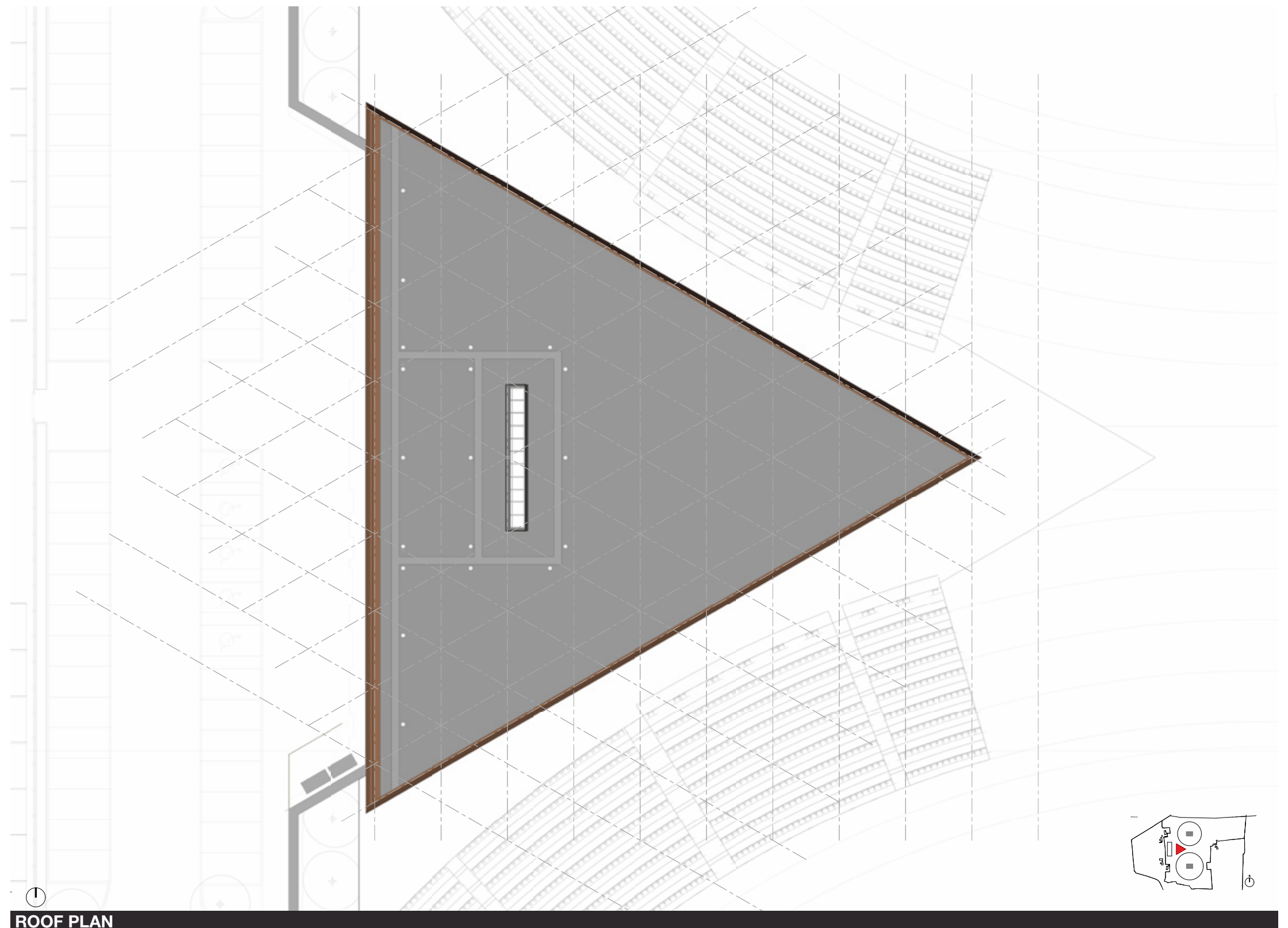


UPPER GROUND FLOOR AXONOMETRIC VIEW

Roof Plan

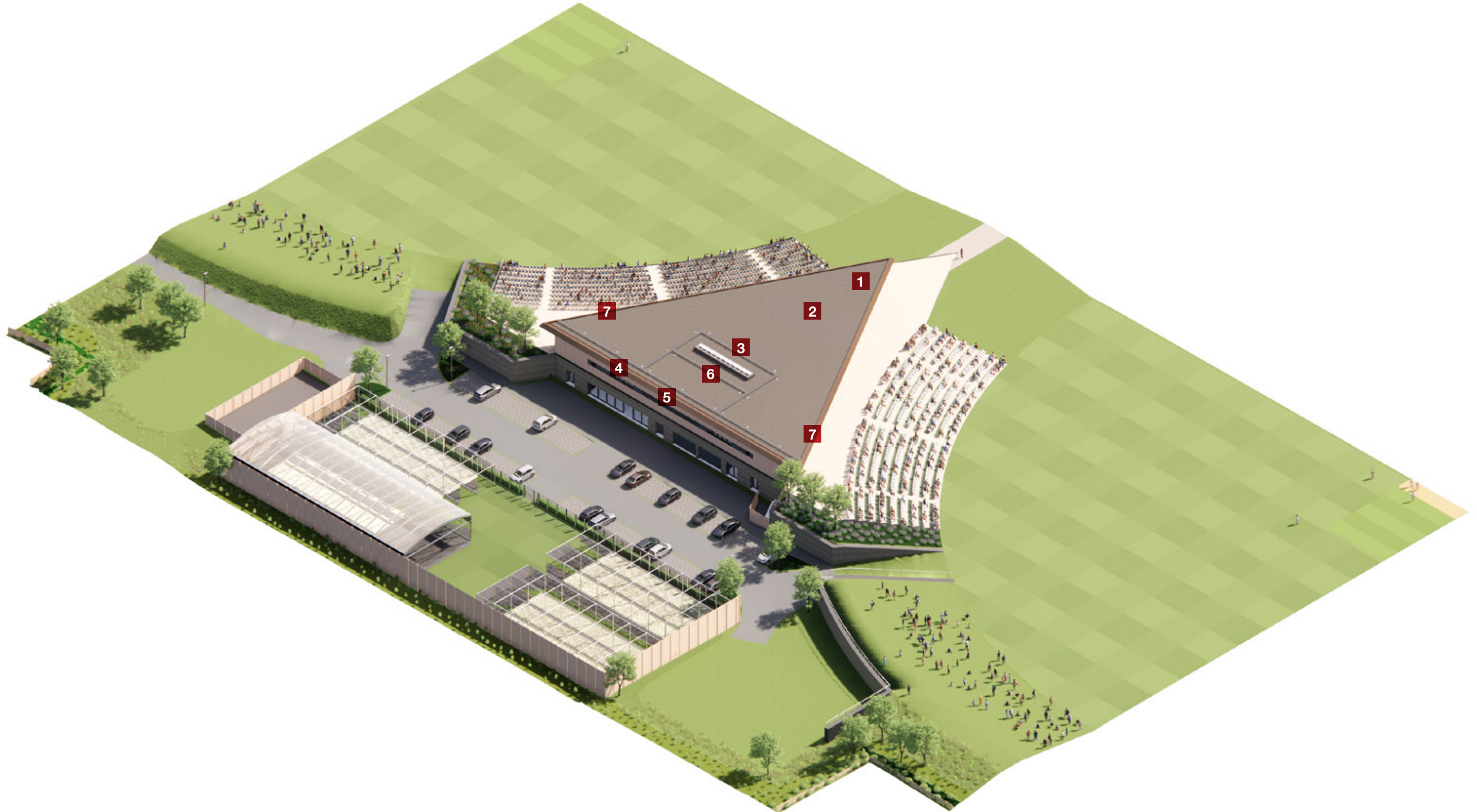
Key elements of the roof plan include:

- Gentle slope from a low point to the west (rear) elevation, to a high point at the 'prow' of the building at the apex of the triangular plan form over the main function space.
- Stone ballasted inverted roof surface
- Linear roof light above the central circulation core
- Concealed internal rainwater collection gutter within the roof along the west elevation.
- Access for inspection of the roof and gutter via cherry picker to the west elevation
- Access to the roof to allow inspection and maintenance of the roof light with integral safety fall restraint system
- Bronze coloured metal panelled eaves and roof soffit to perimeter and roof overhang to north and south elevations



ROOF PLAN

1. Gently sloped roof from a low point to the west (rear) elevation, to a high point at the 'prow' of the building at the apex of the triangular plan form over the main function space.
2. Stone ballasted inverted roof surface
3. Linear roof light above the central circulation core
4. Concealed internal rainwater collection gutter within the roof along the west elevation.
5. Access for inspection of the roof and gutter via cherry picker to the west elevation
6. Access to the roof to allow inspection and maintenance of the roof light with integral safety fall restraint system
7. Bronze coloured metal panelled eaves and roof soffit to perimeter and roof overhang to north and south elevations



Design Inspiration | Cricket Pavilions in Green Settings

The adjacent precedent cricket Pavilion exemplars have been selected to provide a flavour of some of the design inspiration which has helped inform our approach to the design of the Pavilion building for Farington Cricket Ground. Cricket Pavilions have a long tradition and well established typology. However, the examples which we have cited here have been chosen as more contemporary examples which tackle the challenges of creating a sensitive intervention within a green setting.

Key characteristics from these examples which we have used to help us develop our design for the Pavilion at Farington include the following approaches and features:

- Nestling the building into the landscape topography and pitch bowl to reduce visual impact
- Shaping the form of the roof to create a delicate element, whilst creating passive shade and shelter for spectators and guests within the building
- Integrating the shape and topography of the viewing terraces with the principal level of the Pavilion, reinforcing the expression of a simple form sat respectfully looking out to the landscape
- Maximising opportunities for visibility and accessibility from key cricket accommodation and pitch side viewing spaces
- Utilising complementary natural materials, including stone, timber, concrete and metal to ground the building within the landscape and respond to the naturally green rural setting

The section and elevations drawings, along with the three dimensional model views and illustrations which follow illustrate how we have developed our strategy to create a wonderful cricket Pavilion building which will be unique to Farington, shaped around the specifics of Lancashire Cricket's project brief, in parallel with the site characteristics and topography described earlier within this report.



A range of contemporary examples of cricket Pavilion buildings in sensitive and green settings.

1. Oundle Cricket Pavilion, Northampton (Levitare Architects)
2. Teddington Cricket Pavilion, Richmond Upon Thames (Reed Watts Architects)
3. Merrion Cricket Pavilion, Dublin (TAKA Architects)
4. Martyr's Pavilion, St Edwards, Oxford (John Pawson Architects)
5. Merrion Cricket Pavilion, Dublin (TAKA Architects)
6. Martyr's Pavilion, St Edwards, Oxford (John Pawson Architects)
7. Kinley Cricket Pavilion, Australia (Winter Architecture)
8. Hagley Park Pavilion, Christchurch, New Zealand (Athfield Architects)



5



6

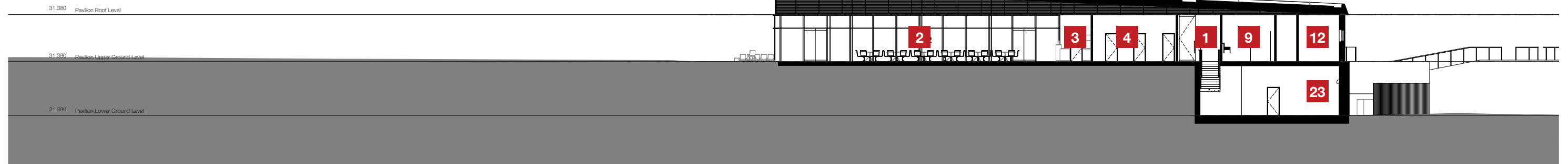
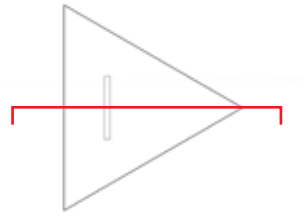


7



8

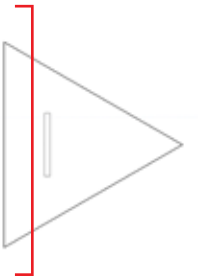
The Pavilion | Sections



ROOM KEY

- | | |
|---|---|
| 1. Central circulation core with stair and lift | 13. Coach changing and attendant storage |
| 2. Function space for 160 seated guests | 14. Space for anti-doping function |
| 3. Bar and associated storage | 15. Media content creation studio |
| 4. Kitchen with associated cold and dry storage | 16. Team and staff entrance and reception |
| 5. Public WCs | 17. Office |
| 6. Changing places accessible facilities | 18. Logistics store |
| 7. First aid room | 19. Cellar |
| 8. Physiotherapy treatment room | 20. Gym and associated storage |
| 9. Dressing rooms for four teams, including changing space and lockers, match viewing and padding up space, analyst position, showers and WC. | 21. Cricket equipment storage |
| 10. Scorers and officials viewing | 22. Grounds maintenance office, mess and changing |
| 11. Players lounge and dining space for 40 people | 23. Grounds equipment garage and storage |
| 12. Match officials changing and lounge | 24. Incoming services / switch room |
| | 25. Mechanical and electrical plant |

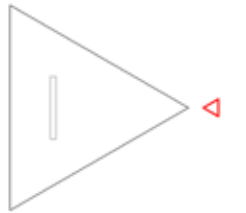
LONG SECTION THROUGH THE PAVILION BUILDING ALONG THE EAST-WEST AXIS LOOKING SOUTH



ROOM KEY

- | | |
|---|---|
| 1. Central circulation core with stair and lift | 13. Coach changing and attendant storage |
| 2. Function space for 160 seated guests | 14. Space for anti-doping function |
| 3. Bar and associated storage | 15. Media content creation studio |
| 4. Kitchen with associated cold and dry storage | 16. Team and staff entrance and reception |
| 5. Public WCs | 17. Office |
| 6. Changing places accessible facilities | 18. Logistics store |
| 7. First aid room | 19. Cellar |
| 8. Physiotherapy treatment room | 20. Gym and associated storage |
| 9. Dressing rooms for four teams, including changing space and lockers, match viewing and padding up space, analyst position, showers and WC. | 21. Cricket equipment storage |
| 10. Scorers and officials viewing | 22. Grounds maintenance office, mess and changing |
| 11. Players lounge and dining space for 40 people | 23. Grounds equipment garage and storage |
| 12. Match officials changing and lounge | 24. Incoming services / switch room |
| | 25. Mechanical and electrical plant |

CROSS SECTION THROUGH THE PAVILION BUILDING ALONG THE NORTH-SOUTH AXIS LOOKING WEST



The Pavilion | Elevations



MATERIAL KEY

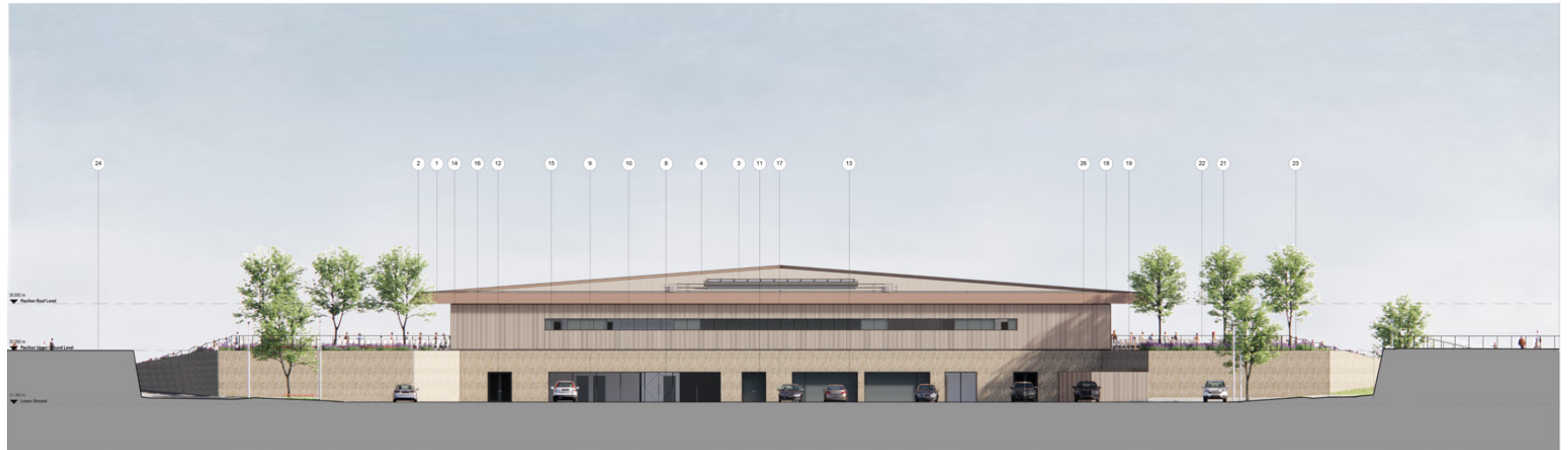
1. Aluminium fascia with concealed gutter and matching perimeter profiled eaves – colour: bronze
2. Aluminium panelised soffit panels with integrated lighting – colour: bronze
3. Linear rooflight with aluminium framing – colour: dark grey
4. Inverted roof with stone ballast
5. Aluminium glazed curtain wall with manifestation – colour: dark grey
6. Aluminium sliding glazed doors integrated with curtain wall system – colour: dark grey
7. Aluminium glazed curtain wall with horizontal transom caps and opening lights – colour: dark grey
8. Aluminium framed glazed entrance doors with matching surround / reveal – colour: dark grey
9. Aluminium curtain wall with integrated opening lights – colour: dark grey
10. Individual aluminium window with integral opening lights and matching surround / reveal – colour: dark grey
11. PPC steel doors with matching recessed surround / reveal – colour: dark grey RAL 7010
12. PPC steel louvred doors with matching recessed surround / reveal – colour: dark grey RAL 7010
13. PPC steel roller shutter with matching recessed surround / reveal – colour: dark grey RAL 7010
14. Perforated slot aluminium rainscreen cladding with concealed intake/exhaust apertures – colour: dark grey
15. Flat aluminium rainscreen cladding with matching recessed surround adjoining adjacent window reveal – colour: dark grey
16. Vertical board-on-board timber cladding with natural finish
17. Stone gabion rainscreen wall with s/s clips and insulated concrete block backing – colour/mix: local sandstone to match adjacent retaining gabion walls.
18. Stone gabion retaining wall – colour/mix: local sandstone to match adjacent gabion rainscreen (refer to landscape architect and C&S engineer for details)
19. Stone gabion perimeter edge wall to head of retaining wall / bund (refer to landscape architect and C&S engineer for details)
20. CHS steel column with metallic painted finish – colour: bronze metallic (refer to C&S Engineer documentation for details)
21. Polymer tip-up spectator seating with integral galvanised steel support rails – colour: light grey
22. Pre cast concrete spectator viewing terrace steps (refer to landscape architect for details)
23. Pre cast concrete spectator viewing terrace (refer to landscape architect for details)
24. Grassed landscape spectator viewing slope (refer to landscape architect for details)
25. Fine turf cricket pitch (refer to pitch specialist documentation for details)



MATERIAL KEY

1. Aluminium fascia with concealed gutter and matching perimeter profiled eaves – colour: bronze
2. Aluminium panelised soffit panels with integrated lighting – colour: bronze
3. Linear rooflight with aluminium framing – colour: dark grey
4. Inverted roof with stone ballast
5. Aluminium glazed curtain wall with manifestation – colour: dark grey
6. Aluminium sliding glazed doors integrated with curtain wall system – colour: dark grey
7. Aluminium glazed curtain wall with horizontal transom caps and opening lights – colour: dark grey
8. Aluminium framed glazed entrance doors with matching surround / reveal – colour: dark grey
9. Aluminium curtain wall with integrated opening lights – colour: dark grey
10. Individual aluminium window with integral opening lights and matching surround / reveal – colour: dark grey
11. PPC steel doors with matching recessed surround / reveal – colour: dark grey RAL 7010
12. PPC steel louvred doors with matching recessed surround / reveal – colour: dark grey RAL 7010
13. PPC steel roller shutter with matching recessed surround / reveal – colour: dark grey RAL 7010
14. Perforated slot aluminium rainscreen cladding with concealed intake/exhaust apertures – colour: dark grey
15. Flat aluminium rainscreen cladding with matching recessed surround adjoining adjacent window reveal – colour: dark grey
16. Vertical board-on-board timber cladding with natural finish
17. Stone gabion rainscreen wall with s/s clips and insulated concrete block backing – colour/mix: local sandstone to match adjacent retaining gabion walls.
18. Stone gabion retaining wall – colour/mix: local sandstone to match adjacent gabion rainscreen (refer to landscape architect and C&S engineer for details)
19. Stone gabion perimeter edge wall to head of retaining wall / bund (refer to landscape architect and C&S engineer for details)
20. CHS steel column with metallic painted finish – colour: bronze metallic (refer to C&S Engineer documentation for details)
21. Polymer tip-up spectator seating with integral galvanised steel support rails – colour: light grey
22. Pre cast concrete spectator viewing terrace steps (refer to landscape architect for details)
23. Pre cast concrete spectator viewing terrace (refer to landscape architect for details)
24. Grassed landscape spectator viewing slope (refer to landscape architect for details)
25. Fine turf cricket pitch (refer to pitch specialist documentation for details)

NORTH ELEVATION



MATERIAL KEY

1. Aluminium fascia with concealed gutter and matching perimeter profiled eaves – colour: bronze
2. Aluminium panelised soffit panels with integrated lighting – colour: bronze
3. Linear rooflight with aluminium framing – colour: dark grey
4. Inverted roof with stone ballast
5. Aluminium glazed curtain wall with manifestation – colour: dark grey
6. Aluminium sliding glazed doors integrated with curtain wall system – colour: dark grey
7. Aluminium glazed curtain wall with horizontal transom caps and opening lights – colour: dark grey
8. Aluminium framed glazed entrance doors with matching surround / reveal – colour: dark grey
9. Aluminium curtain wall with integrated opening lights – colour: dark grey
10. Individual aluminium window with integral opening lights and matching surround / reveal – colour: dark grey
11. PPC steel doors with matching recessed surround / reveal – colour: dark grey RAL 7010
12. PPC steel louvred doors with matching recessed surround / reveal – colour: dark grey RAL 7010
13. PPC steel roller shutter with matching recessed surround / reveal – colour: dark grey RAL 7010
14. Perforated slot aluminium rainscreen cladding with concealed intake/exhaust apertures – colour: dark grey
15. Flat aluminium rainscreen cladding with matching recessed surround adjoining adjacent window reveal – colour: dark grey
16. Vertical board-on-board timber cladding with natural finish
17. Stone gabion rainscreen wall with s/s clips and insulated concrete block backing – colour/mix: local sandstone to match adjacent retaining gabion walls.
18. Stone gabion retaining wall – colour/mix: local sandstone to match adjacent gabion rainscreen (refer to landscape architect and C&S engineer for details)
19. Stone gabion perimeter edge wall to head of retaining wall / bund (refer to landscape architect and C&S engineer for details)
20. CHS steel column with metallic painted finish – colour: bronze metallic (refer to C&S Engineer documentation for details)
21. Polymer tip-up spectator seating with integral galvanised steel support rails – colour: light grey
22. Pre cast concrete spectator viewing terrace steps (refer to landscape architect for details)
23. Pre cast concrete spectator viewing terrace (refer to landscape architect for details)
24. Grassed landscape spectator viewing slope (refer to landscape architect for details)
25. Fine turf cricket pitch (refer to pitch specialist documentation for details)

WEST ELEVATION



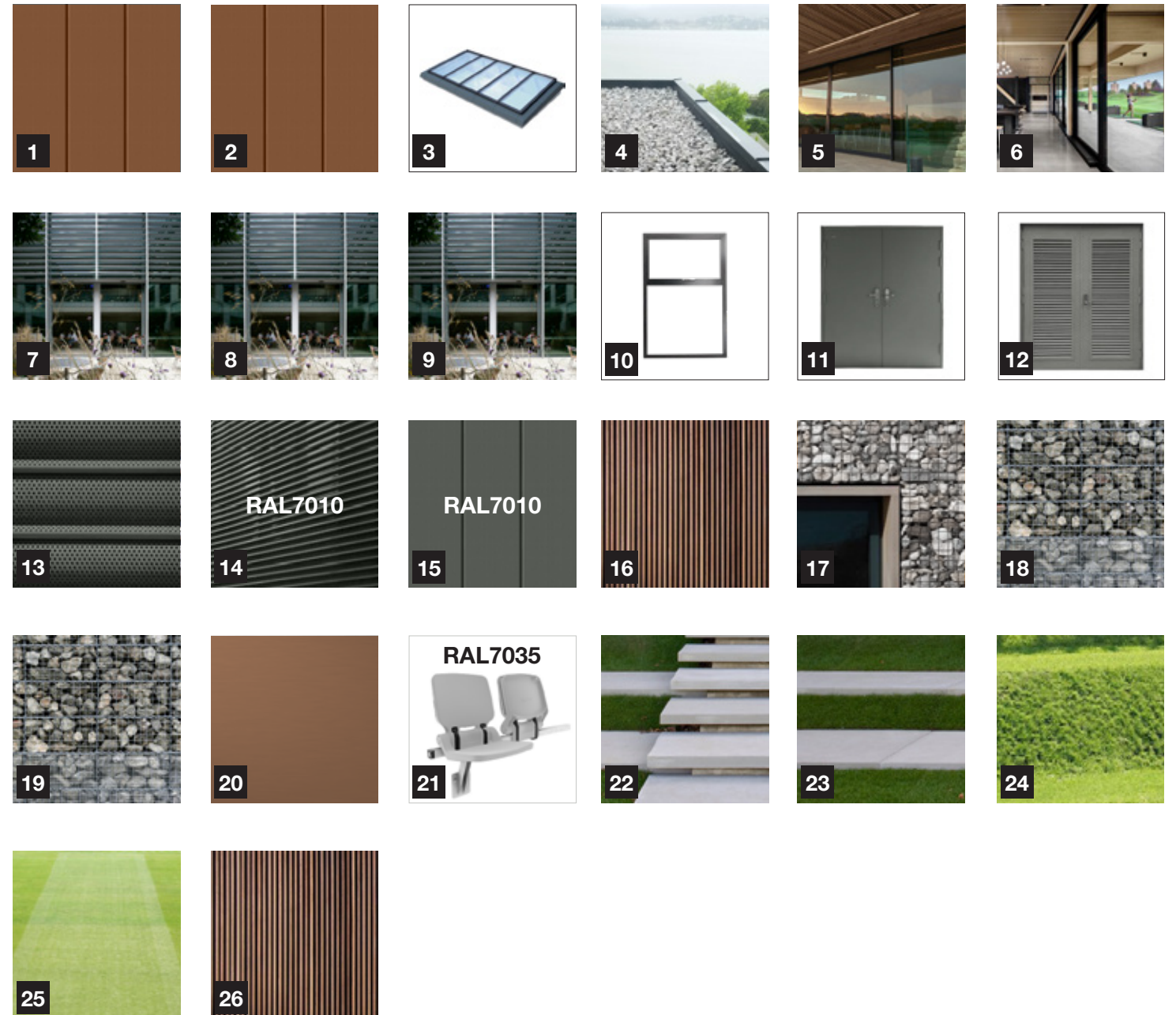
MATERIAL KEY

1. Aluminium fascia with concealed gutter and matching perimeter profiled eaves – colour: bronze
2. Aluminium panelised soffit panels with integrated lighting – colour: bronze
3. Linear rooflight with aluminium framing – colour: dark grey
4. Inverted roof with stone ballast
5. Aluminium glazed curtain wall with manifestation – colour: dark grey
6. Aluminium sliding glazed doors integrated with curtain wall system – colour: dark grey
7. Aluminium glazed curtain wall with horizontal transom caps and opening lights – colour: dark grey
8. Aluminium framed glazed entrance doors with matching surround / reveal – colour: dark grey
9. Aluminium curtain wall with integrated opening lights – colour: dark grey
10. Individual aluminium window with integral opening lights and matching surround / reveal – colour: dark grey
11. PPC steel doors with matching recessed surround / reveal – colour: dark grey RAL 7010
12. PPC steel louvred doors with matching recessed surround / reveal – colour: dark grey RAL 7010
13. PPC steel roller shutter with matching recessed surround / reveal – colour: dark grey RAL 7010
14. Perforated slot aluminium rainscreen cladding with concealed intake/exhaust apertures – colour: dark grey
15. Flat aluminium rainscreen cladding with matching recessed surround adjoining adjacent window reveal – colour: dark grey
16. Vertical board-on-board timber cladding with natural finish
17. Stone gabion rainscreen wall with s/s clips and insulated concrete block backing – colour/mix: local sandstone to match adjacent retaining gabion walls.
18. Stone gabion retaining wall – colour/mix: local sandstone to match adjacent gabion rainscreen (refer to landscape architect and C&S engineer for details)
19. Stone gabion perimeter edge wall to head of retaining wall / bund (refer to landscape architect and C&S engineer for details)
20. CHS steel column with metallic painted finish – colour: bronze metallic (refer to C&S Engineer documentation for details)
21. Polymer tip-up spectator seating with integral galvanised steel support rails – colour: light grey
22. Pre cast concrete spectator viewing terrace steps (refer to landscape architect for details)
23. Pre cast concrete spectator viewing terrace (refer to landscape architect for details)
24. Grassed landscape spectator viewing slope (refer to landscape architect for details)
25. Fine turf cricket pitch (refer to pitch specialist documentation for details)

SOUTH ELEVATION

Pavilion Materiality

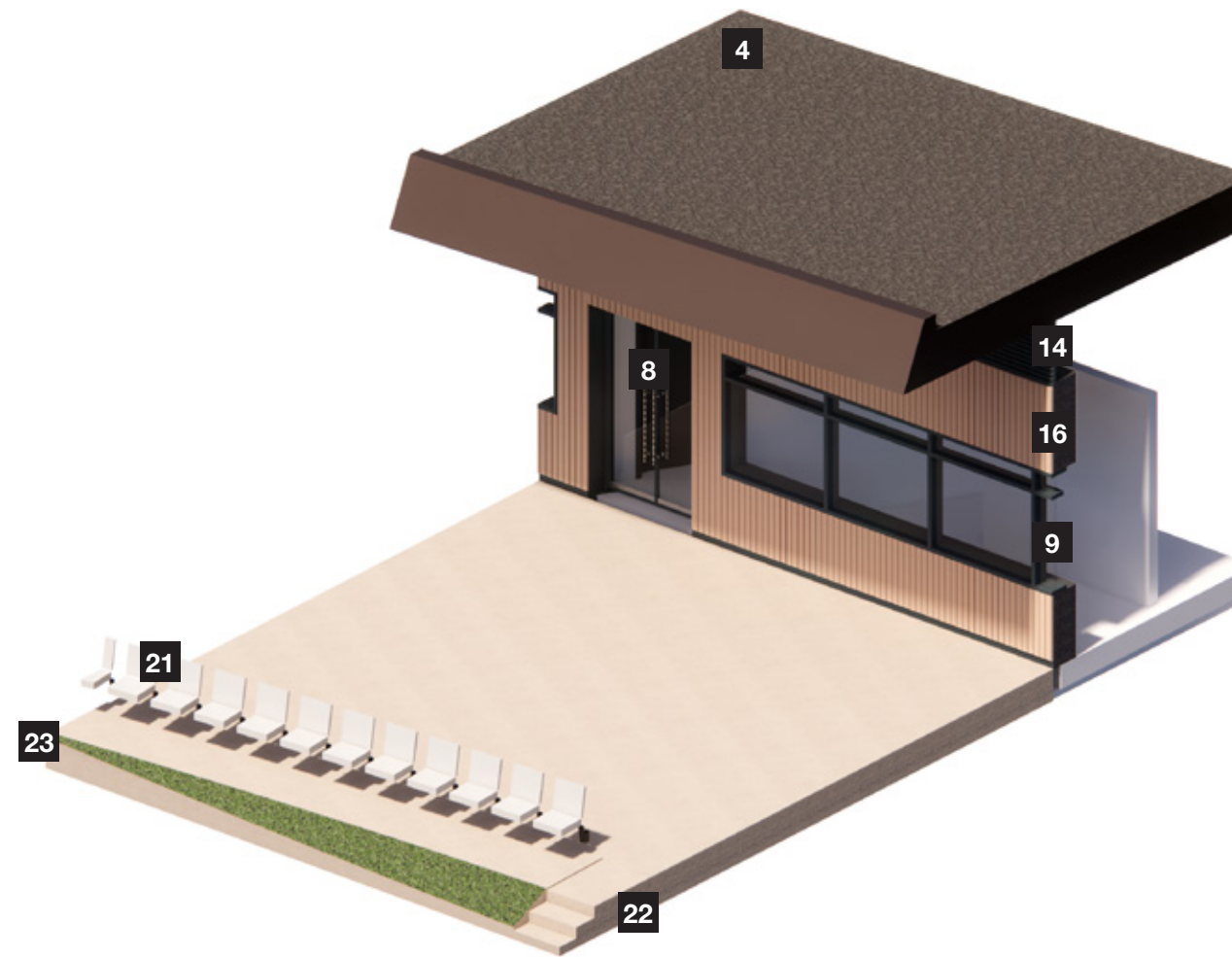
1. Aluminium fascia with concealed gutter and matching perimeter profiled eaves – colour: bronze
2. Aluminium panelised soffit panels with integrated lighting – colour: bronze
3. Linear rooflight with aluminium framing – colour: dark grey
4. Inverted roof with stone ballast
5. Aluminium glazed curtain wall with manifestation – colour: dark grey
6. Aluminium sliding glazed doors integrated with curtain wall system – colour: dark grey
7. Aluminium glazed curtain wall with horizontal transom caps and opening lights – colour: dark grey
8. Aluminium framed glazed entrance doors with matching surround / reveal – colour: dark grey
9. Aluminium curtain wall with integrated opening lights – colour: dark grey
10. Individual aluminium window with integral opening lights and matching surround / reveal – colour: dark grey
11. Steel doors with matching recessed surround / reveal – colour: dark grey RAL 7010
12. Steel louvred doors with matching recessed surround / reveal – colour: dark grey RAL 7010
13. Steel roller shutter with matching recessed surround / reveal – colour: dark grey RAL 7010
14. Perforated slot aluminium rainscreen cladding with concealed intake/exhaust apertures – colour: dark grey
15. Flat aluminium rainscreen cladding with matching recessed surround adjoining adjacent window reveal – colour: dark grey
16. Vertical board-on-board timber cladding with natural finish
17. Stone gabion rainscreen wall with s/s clips and insulated concrete block backing – colour/mix: local sandstone to match adjacent retaining gabion walls.
18. Stone gabion retaining wall – colour/mix: local sandstone to match adjacent gabion rainscreen (refer to landscape architect and C&S engineer for details)
19. Stone gabion perimeter edge wall to head of retaining wall / bund (refer to landscape architect and C&S engineer for details)
20. Circular hollow section steel column with metallic painted finish – colour: bronze metallic (refer to C&S Engineer documentation for details)
21. Polymer tip-up spectator seating with integral galvanised steel support rails – colour: light grey
22. Pre cast concrete spectator viewing terrace steps (refer to landscape architect for details)
23. Pre cast concrete spectator viewing terrace (refer to landscape architect for details)
24. Grassed landscape spectator viewing slope (refer to landscape architect for details)
25. Fine turf cricket pitch (refer to pitch specialist documentation for details)
26. Vertical board-on-board timber fence with natural finish



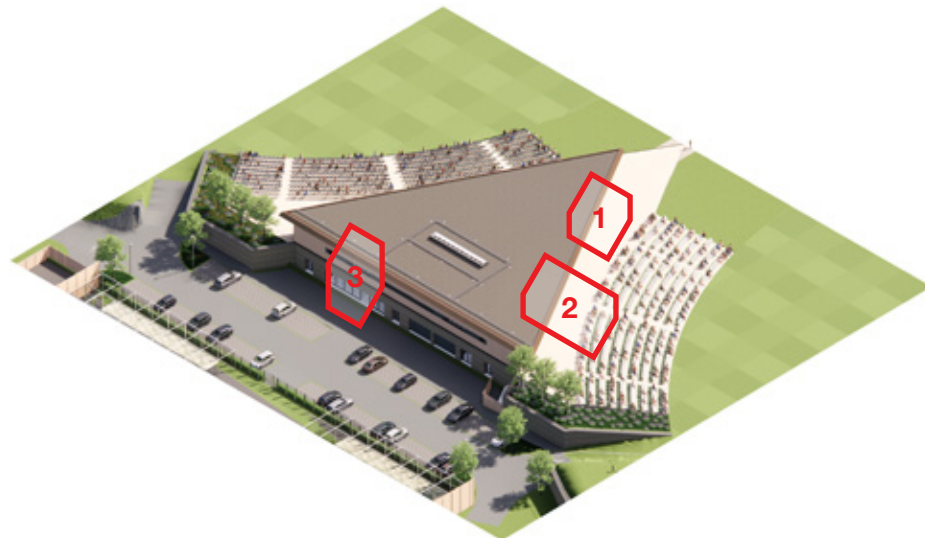
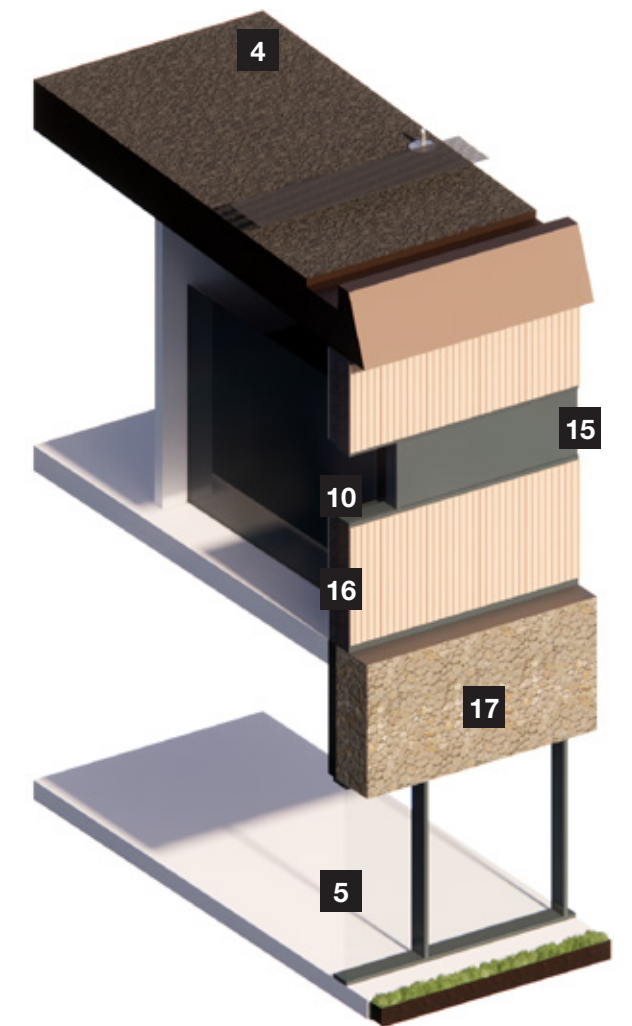
1 | Detail Axonometric - Function Space



2 | Detail Axonometric - Dressing Room & Terrace



3 | Detail Axonometric - Dressing Room & Gym



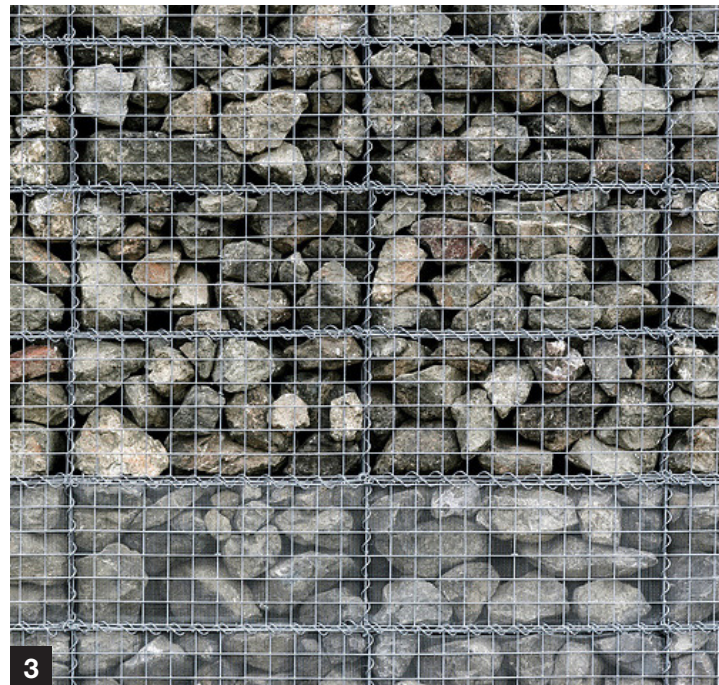
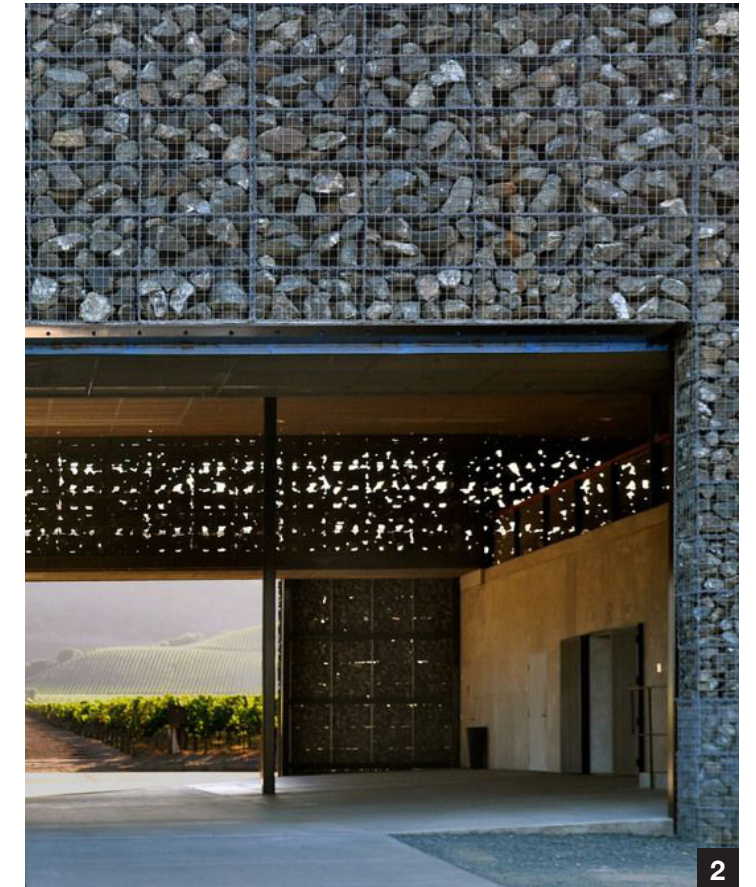
A range of examples illustrating the natural solidity of stone gabion walls which provide a visual robustness to the plinth of the proposed Pavilion building.

External Materiality | The Plinth

The materials precedent images over the following six pages have been selected to tell the story of the textures, materials and finishes which have been proposed for the Pavilion building, as illustrated within the elevations earlier within the report.

Starting with the plinth of the building, stone gabions have been selected to form a robust and grounded plinth upon which the principle upper ground floor of the building is positioned. Used as a rain screen to the outer face of the building to the west elevation, the language of the gabions extended into the landscape on either side, complimenting the gabion retaining structures to the pitch viewing terraces to the north and south.

The gabions have a rich textural appearance which fits with the rural agricultural context, and offer a robust and appropriate response to the retaining structures at the lower ground level.



The proposed spectator viewing accommodation at Farington Cricket Ground falls into two categories; firstly the more formal but gently curved terrace seated viewing adjacent to the Pavilion building, and secondly the more informal landscaped bowls which create a natural green enclosure around both pitches.

External Materiality | Viewing Terraces & Slopes

Extending the materiality beyond the Pavilion building to the adjacent viewing slopes and terraces, the formality of the building is reflected in the relative approach to the adjacent viewing areas.

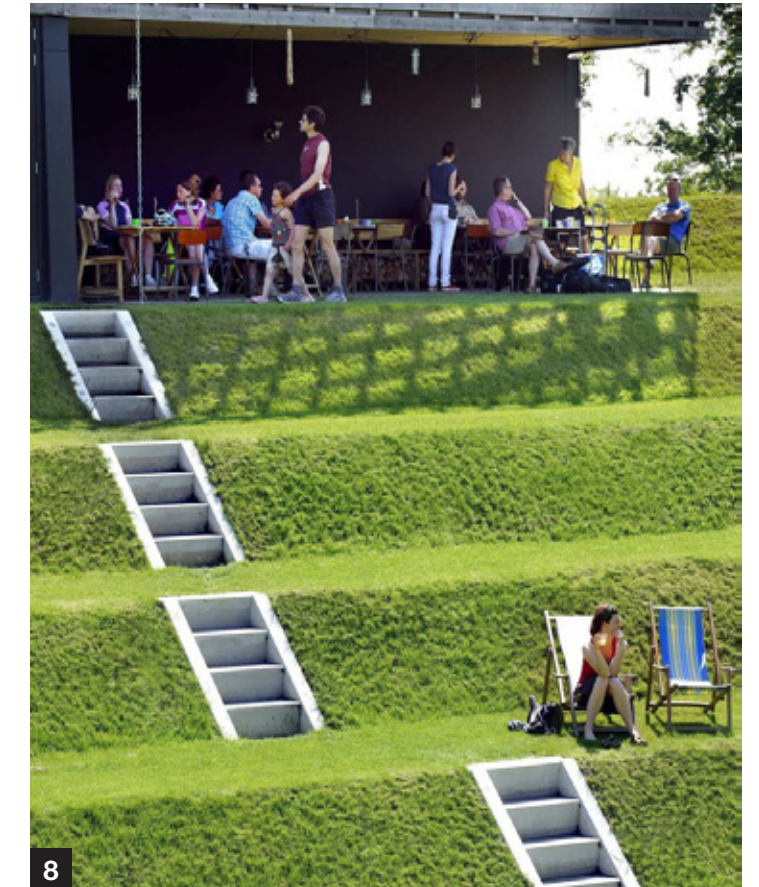
Adjacent to the Pavilion the viewing terraces take the form of more formal concrete steppings set into the landscaped grass slopes on either side, along with the provision of formal fixed spectator seating.

Meanwhile, the grassed viewing slopes on all other sides of the ground have a more informal softness which creates a natural viewing amphitheatre around the whole of each of the two pitches, blending gently into the existing site topography, adding to the character of a green enclosed landscaped setting.

Further details of all proposed hard and soft landscape materials and surfaces can be found in chapter 5.6 of this report authored by Urban Green.



7



8



9



10



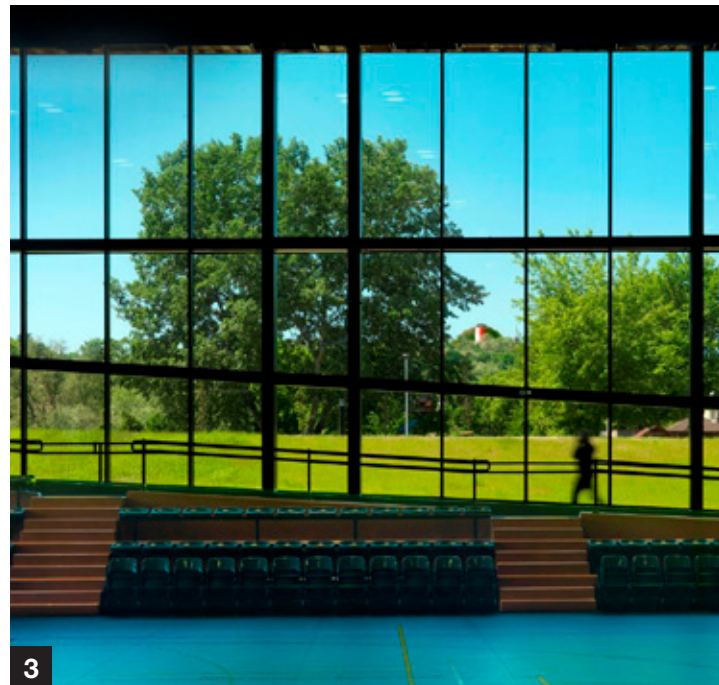
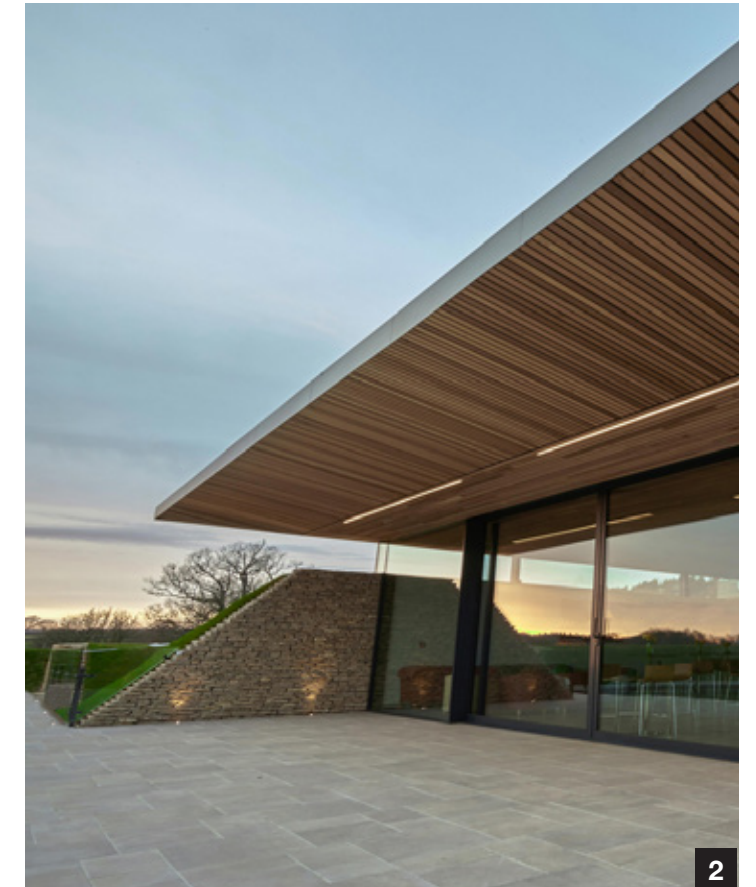
11

Glazing at the prow of the Pavilion building maximises the visual connection between inside and outside from the natural vantage point at the head of the viewing slopes encompassing the pitches, engaging visitors with the cricket on both sides of the Pavilion building.

External Materiality | Glazing, Doors and Views Out

Within the outward-facing spaces of the building and the public function space at the Pavilion's 'prow', full height glazed curtain walling affords views in and out of the function space, looking out the two pitches to the north and the south of the building.

Within the glazing, sliding doors and a glazed lobby at the prow of the building provide level accessibility, connecting the function space with the spectator viewing areas and landscaped footpath network beyond.



The more solid expression wrapping around the north, west and south elevations at the rear of the upper Pavilion building compliments the tone and softness of the landscaped green setting with vertical timber cladding echoing the new and existing trees within the surrounding landscape.

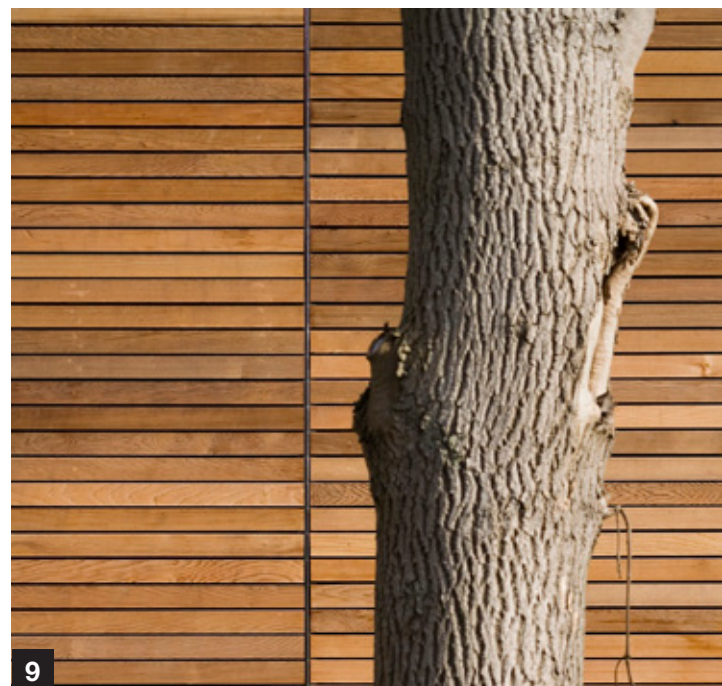
External Materiality | Timber Cladding

The rear of the Pavilion building at the upper ground level is articulated as a separate, lighter, element positioned on top of the solidity of the stone gabion plinth at the lower ground level.

This part of the building contains a range of core functional spaces, from dressing rooms, officials and scorers rooms which require a view out over the cricket, to other support spaces such as the players and officials lounge which also require daylight, alongside varying needs for privacy.

To compliment the rural setting and maximising the use of sustainable natural materials, vertical timber cladding is utilised to these more solid elements of the upper ground level, with individual windows and door openings punched through the timber to suit to needs of the spaces beyond as openings and slots within the timber.

The natural finish of the timber will weather naturally over time as the surrounding landscaping matures, helping the building and setting to form a complimentary and appropriate backdrop to the existing rural setting.



The steel structure and metal eaves and soffit of the gently sloped roof are finished in a warm bronze colour to complement the warm tones of the stone gabions and timber cladding.

External Materiality | Structure & Soffits

The concrete retaining walls and steel superstructure of the Pavilion building will not be visible externally, other than through the larger glazed elements of the Pavilion building. Nonetheless, it is proposed to paint exposed steel columns within the function space with a bronze metallic paint finish to compliment the warm tones of the stone gabions and timber elements of the external elevations.

Similarly, the metal panelled eaves at the roof perimeter and the soffit of the roof overhang is also finished with a warm bronze colour to complement the surrounding natural tones and materials.

