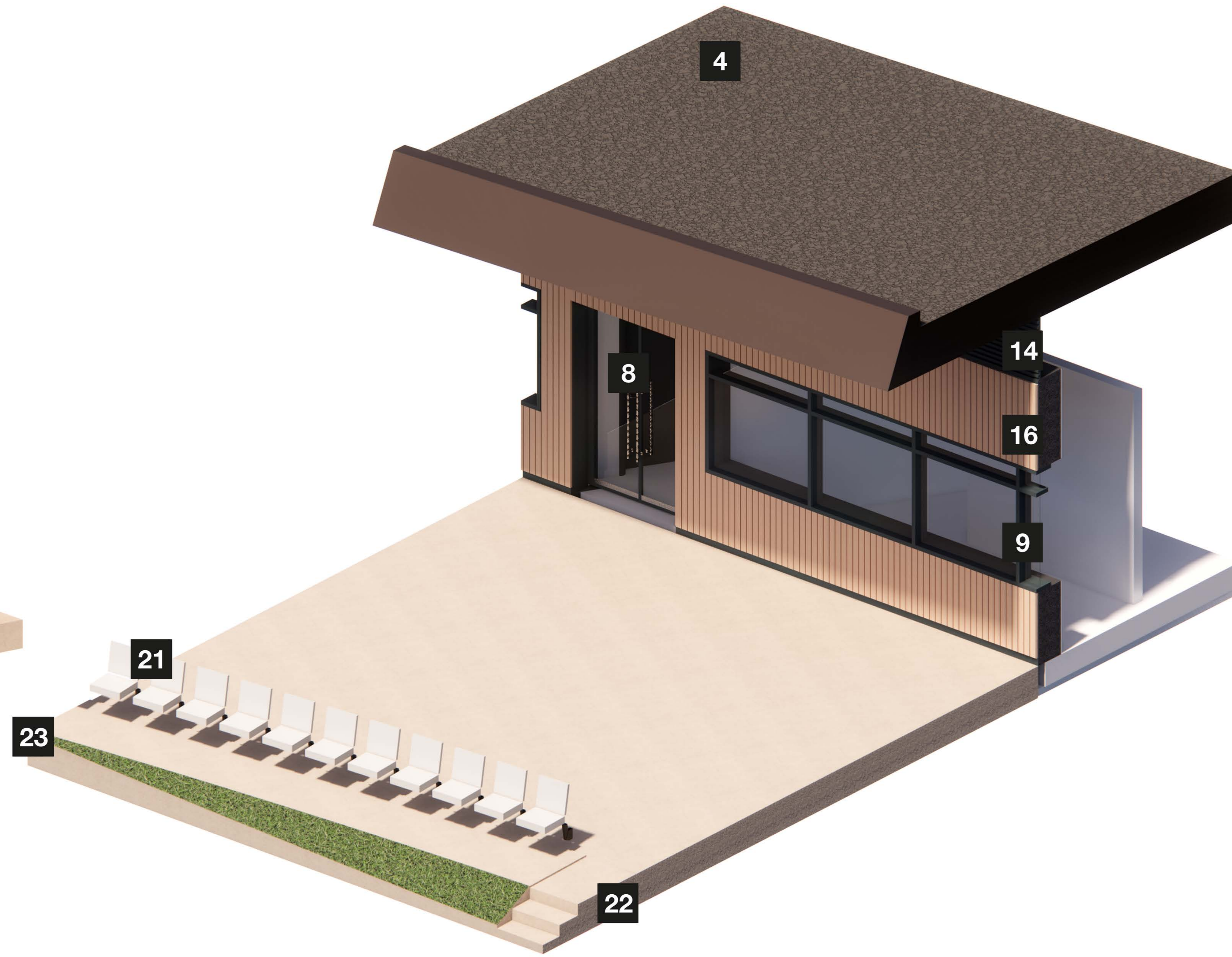
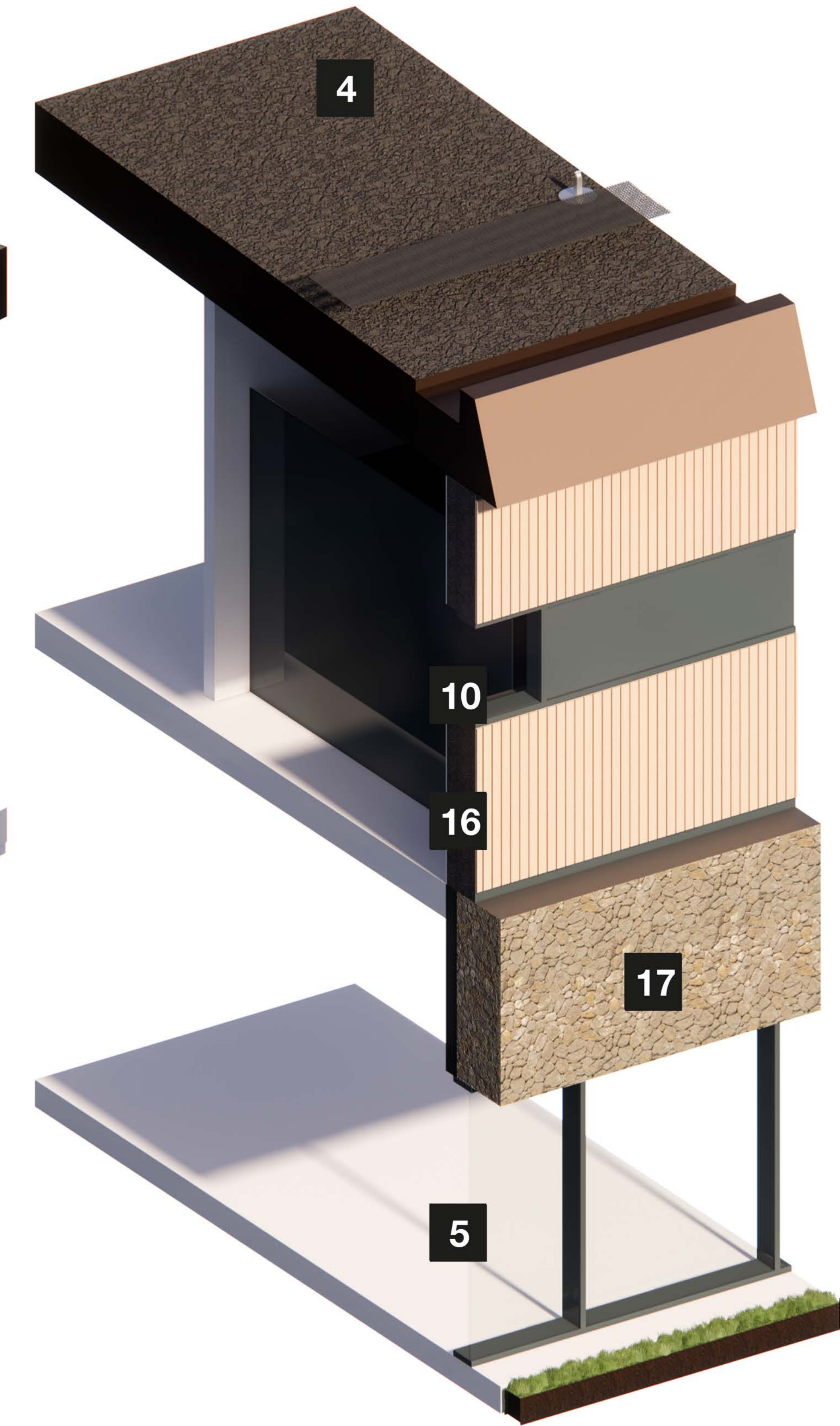




Detail Axonometric - Function



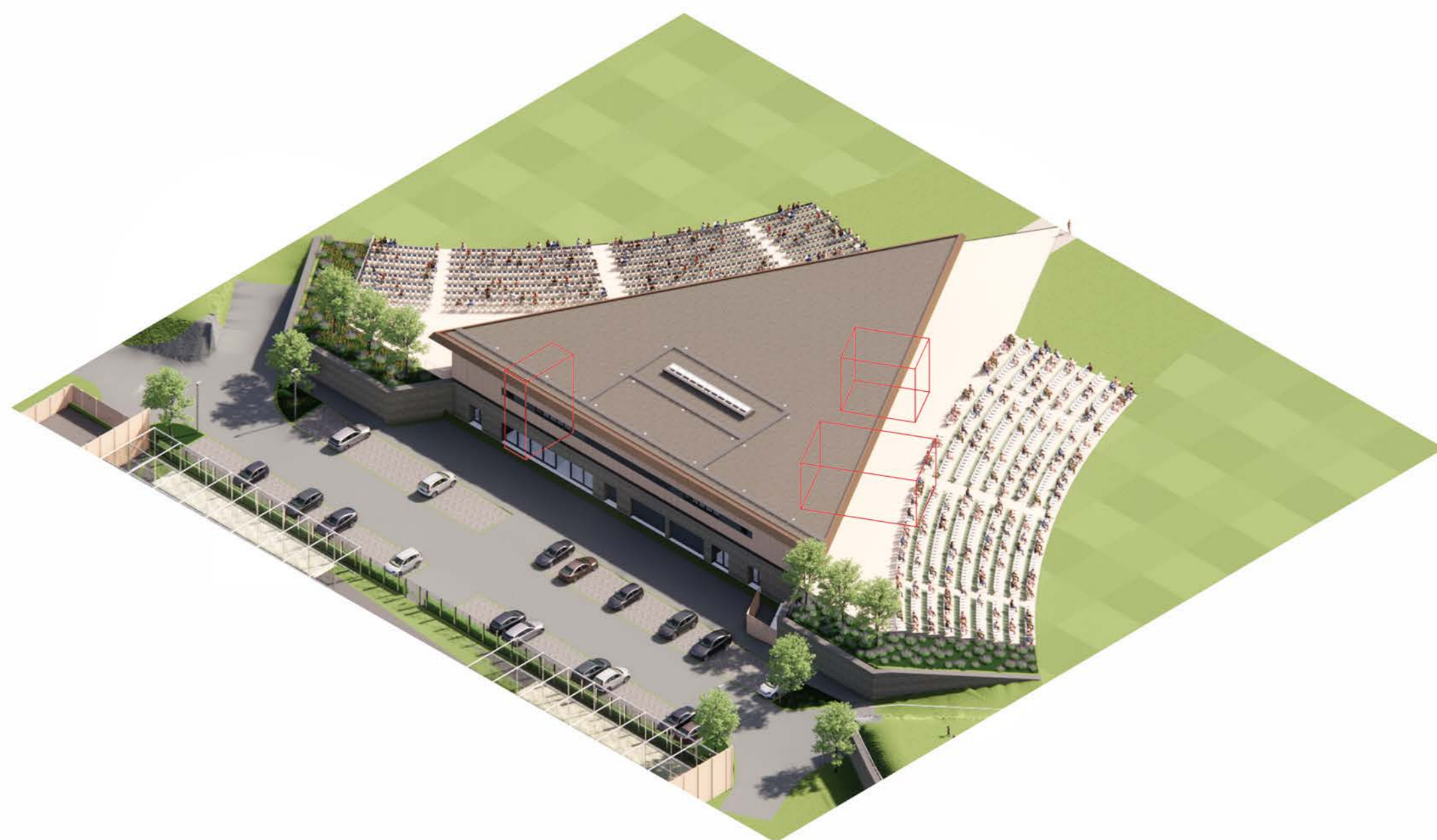
Detail Axonometric - Changing



Detail Axonometric - Groundskeeping

Pavilion Materiality

1. Aluminium fascia with concealed gutter and matching perimeter profiled eaves – colour: bronze
2. Aluminium panelised soffit panels with integrated lighting – colour: bronze
3. Linear rooflight with aluminium framing – colour: dark grey
4. Inverted roof with stone ballast
5. Aluminium glazed curtain wall with manifestation – colour: dark grey
6. Aluminium sliding glazed doors integrated with curtain wall system – colour: dark grey
7. Aluminium glazed curtain wall with horizontal transom caps and opening lights – colour: dark grey
8. Aluminium framed glazed entrance doors with matching surround / reveal – colour: dark grey
9. Aluminium curtain wall with integrated opening lights – colour: dark grey
10. Individual aluminium window with integral opening lights and matching surround / reveal – colour: dark grey
11. Steel doors with matching recessed surround / reveal – colour: dark grey RAL 7010
12. Steel louvred doors with matching recessed surround / reveal – colour: dark grey RAL 7010
13. Steel roller shutter with matching recessed surround / reveal – colour: dark grey RAL 7010
14. Perforated slot aluminium rainscreen cladding with concealed intake/exhaust apertures – colour: dark grey
15. Flat aluminium rainscreen cladding with matching recessed surround adjoining adjacent window reveal – colour: dark grey
16. Vertical board-on-board timber cladding with natural finish
17. Stone gableon rainscreen wall with s/s clips and insulated concrete block backing – colour/mix: local sandstone to match adjacent retaining gableon walls.
18. Stone gableon retaining wall – colour/mix: local sandstone to match adjacent gableon rainscreen (refer to landscape architect and C&S engineer for details)
19. Stone gableon perimeter edge wall to head of retaining wall / bund (refer to landscape architect and C&S engineer for details)
20. Circular hollow section steel column with metallic painted finish – colour: bronze metallic (refer to C&S Engineer documentation for details)
21. Polymer tip-up spectator seating with integral galvanised steel support rails – colour: light grey
22. Pre cast concrete spectator viewing terrace steps (refer to landscape architect for details)
23. Pre cast concrete spectator viewing terrace (refer to landscape architect for details)
24. Grassed landscape spectator viewing slope (refer to landscape architect for details)
25. Fine turf cricket pitch (refer to pitch specialist documentation for details)
26. Vertical board-on-board timber fence with natural finish



NOTES

BUILDING DESIGN PARTNERSHIP SHALL HAVE NO RESPONSIBILITY FOR ANY USE MADE OF THIS DOCUMENT OTHER THAN THAT FOR WHICH IT WAS PREPARED AND ISSUED.

ALL DIMENSIONS SHOULD BE CHECKED ON SITE.

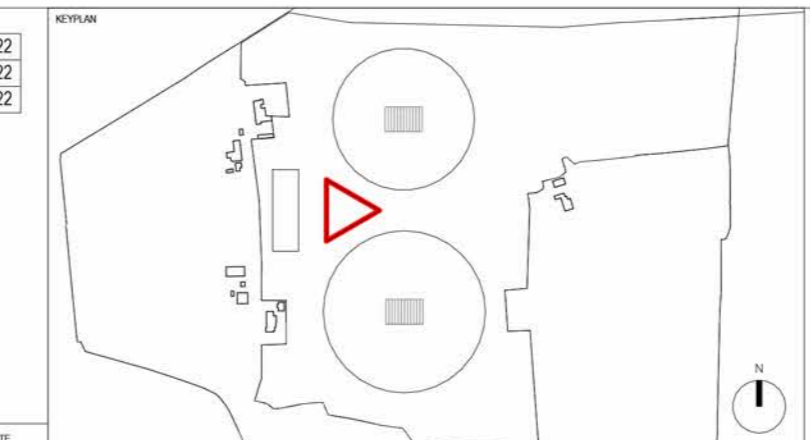
DO NOT SCALE FROM THIS DRAWING.

ANY CHANGES OR DISCREPANCIES SHOULD BE BROUGHT TO THE ATTENTION OF BUILDING DESIGN PARTNERSHIP AT THE ADDRESS SHOWN BELOW.

DRAWINGS SHALL BE READ IN CONJUNCTION WITH THE FOLLOWING BEFORE WORK COMMENCES:

- THE CON DESIGN ISSUES REGISTER
- THE BDP RISK REGISTER OF CHANGING
- THE PROJECT CON RISK REGISTER

REV	DESCRIPTION	BY	DATE
001	Issue for Planning	JAB	26/01/22
002	Issue for Planning	JAB	26/01/22
003	Issue for Planning	JAB	26/01/22



11 Duize Street
PO Box 65
Piccadilly Basin
Manchester
M60 3JA
United Kingdom
T +44 (0)161 828 2200
www.bdp.com



Woodcock Estate

P3000932

Detail Axonometrics

SCALE @ 40

26/01/22

WDK-BDP-Z1-XX-DR-A-(0)-0020 P02