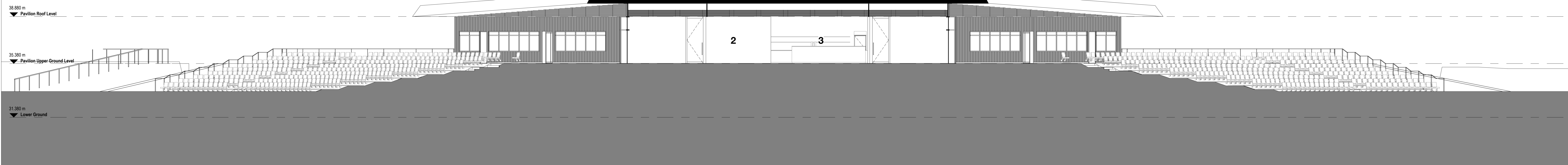
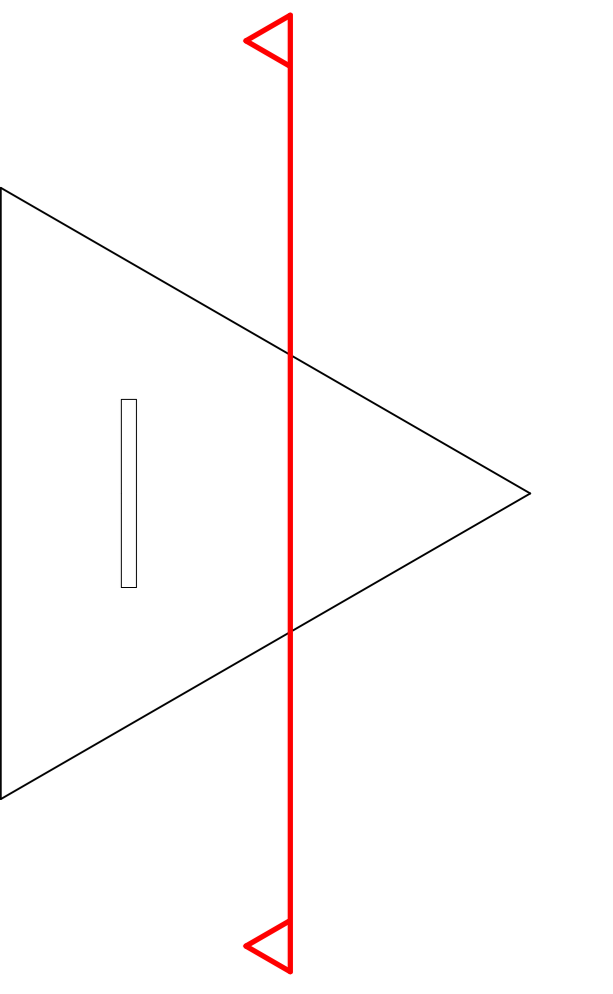
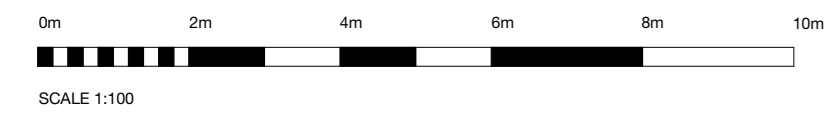


**ROOM KEY**

- 1. Central circulation core with stair and lift
- 2. Function space for 160 seated guests
- 3. Bar and associated storage
- 4. Kitchen with associated cold and dry storage
- 5. Public WCs
- 6. Changing places accessible facilities
- 7. First aid room
- 8. Physiotherapy treatment room
- 9. Dressing rooms for four teams, including changing space and lockers, match viewing and padding up space, analyst position, showers and WC.
- 10. Scorers and officials viewing
- 11. Players lounge and dining space for 40 people
- 12. Match officials changing and lounge
- 13. Coach changing and attendant storage
- 14. Space for anti-doping function
- 15. Media content creation studio
- 16. Team and staff entrance and reception
- 17. Office
- 18. Logistics store
- 19. Cellar
- 20. Gym and associated storage
- 21. Cricket equipment storage
- 22. Grounds maintenance office, mess and changing
- 23. Grounds equipment garage and storage
- 24. Incoming services / switch room
- 25. Mechanical and electrical plant



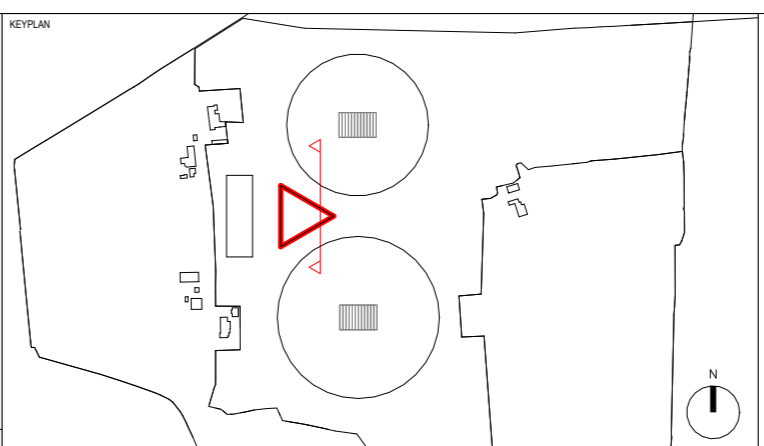
**Cross Section - Function Space**  
1 : 100



BUILDING DESIGN PARTNERSHIP SHALL HAVE NO RESPONSIBILITY FOR ANY USE MADE OF THIS DOCUMENT OTHER THAN FOR THAT WHICH IT WAS PREPARED AND ISSUED.  
 ALL DIMENSIONS SHOULD BE CHECKED ON SITE.  
 DO NOT SCALE FROM THIS DRAWING.  
 ANY DRAWING ERRORS OR DISCREPANCIES SHOULD BE BROUGHT TO THE ATTENTION OF BUILDING DESIGN PARTNERSHIP AT THE ADDRESS SHOWN BELOW.  
 DRAWINGS SHALL BE READ IN CONJUNCTION WITH THE FOLLOWING BEFORE WORK COMMENCES:  
 • THE CDM DESIGN ISSUES REGISTER  
 • THE BDP RISK REGISTER OF CHANGES  
 • THE PROJECT CDM RISK REGISTER

**NOTES**

P00	Final Issue	AB	JAC	04/29/21
P01	Final Design 2 Informal Issue	AB	JAC	04/29/21
P02	Graphics Update	AB	JAC	04/29/21
P03	General Update	AB	JAC	04/29/21
P04	General Update	AB	JAC	04/29/21
P05	Revised for Planning	AB	JAC	04/29/21



11 Duque Street  
 PO Box 65  
 Piccadilly Basin  
 Manchester  
 M60 3JX  
 United Kingdom  
 T +44 (0)161 628 2200  
 www.bdp.com



PROJECT TITLE: Woodcock Estate  
 PROJECT CODE: P3000932  
 DRAWING TITLE: Building Section - Function Space  
 SCALE: @ A0  
 DATE: 04/29/21  
 DRAWING CODE: WDK-BDP-Z1-XX-DR-A-(0)-0016  
 PROJECT CODE: P05