

Summary of proposed tree removal to facilitate development

Tree No.	Species	Proposed Works	Category
T22	Sycamore	Remove	C2
T66	English oak	Remove	B1,2
T67	English oak	Remove	A1,2
T68	English oak	Remove	A1,2,3
T76	English oak	Remove	A1,2
T80	English oak	Remove	B2
T83	Elder	Remove	C2
T84	English oak	Remove	B1
T84b	English oak	Remove	B1
T85	Hawthorn	Remove	C1
T86	Elder	Remove	C1
T87	Sycamore	Remove	B2
T88	Hawthorn	Remove	C1
T89	English Oak	Remove	B1
T168	English oak	Remove	C2, 3
T169	English oak	Remove	A2
T170	English oak	Remove	C2, 3
T171	English oak	Remove	U

ARBORICULTURAL METHOD STATEMENT

TREE PROTECTION FENCING

Tree protection fencing must be installed in the position as shown on the Tree Protection Plan before any other works on site can be undertaken.

Tree Protection Fencing should be set out as per Section 6.2 of BS5837: 2012 and will comprise a scaffold framework, consisting of vertical and horizontal scaffolds with vertical tubes spaced at a maximum of 3m intervals and driven securely into the ground. Weld mesh (Heras or similar) panels will be securely fixed on to this framework with scaffold clamps. Tubes will be firmed into holes in the ground made with post hole boring equipment. Bracing poles will be fixed to the inside of the barrier to ensure maximum rigidity, and should be located to avoid contact with structural roots.

See Detail 1 for details of the protective fencing to be employed in all circumstances, where existing site conditions allow. Fencing is to be erected as shown on the drawing. All fencing must be fixed in position with driven scaffold poles so that they cannot be moved during the construction period.

All-weather notices, A4 size, shall be attached to the tree protection fencing every 10m at 1.5m high with the words: 'Tree Protection Fence—strictly no access'.

MIXING AND STORAGE OF MATERIALS

All mixing and storage of cement and concrete will take place in a designated area, which will be located well outside the vicinity of the RPA.

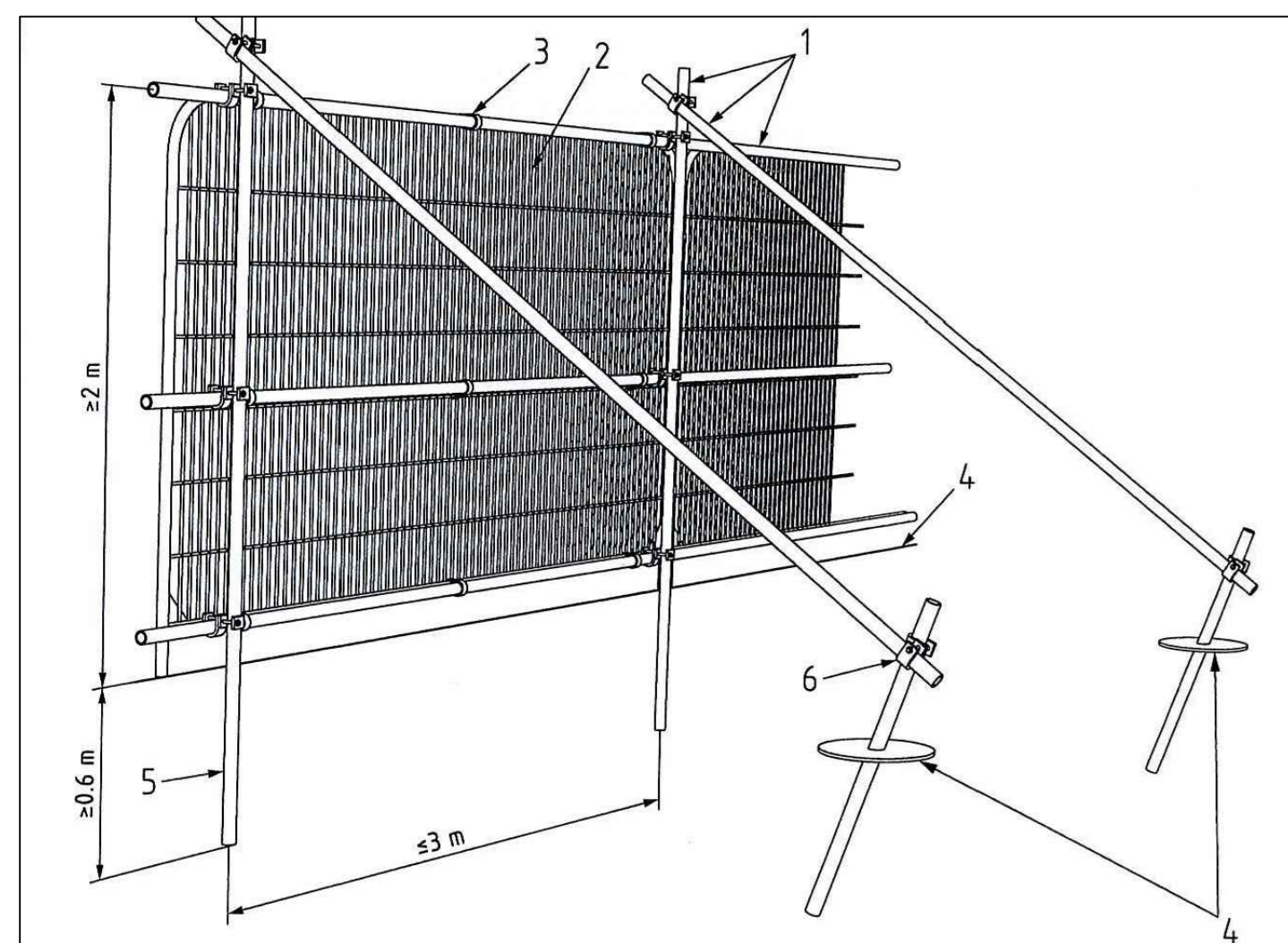
All mixing operations must take place with ground protection in place, which will comprise a tarpaulin and ground boards. A spill kit (which is adequately equipped to deal with the materials being held on site) must be kept on site at all times. A supply of water must also be available during mixing operations (to dilute any spillage).

Summary of proposed tree group removal to facilitate development

Tree No.	Species	Proposed Works	Category
G34	Hawthorn, elder, English oak	Remove section refer to drawing AIA02 Green Corridor AIA02	C2
G36	Sycamore, common beech, Scots pine	Remove section from east and west ends, refer to drawing AIA01	B1,2
G37	Hawthorn, blackthorn, elder	Remove section from east and west ends, refer to drawing AIA01	C2
G47	Blackthorn, hawthorn, wild cherry, common alder	Remove section from central area, refer to drawing AIA01	C2
G54	Goat willow	Remove	C2
G58	Hawthorn, Elder	Remove 19m section	C2
G80b	English oak, turkey oak	Remove	C2
G113	English oak, hawthorn	Remove	B2

Summary of proposed hedge removal to facilitate development

Tree No.	Species	Proposed Works	Category
H7	Hawthorn, sycamore	Remove	-
H13	Hawthorn, elder	Remove section refer to drawing AIA05 Zone D East AIA5 of 5	-
H18	Hawthorn	Remove section along Stanfield Lane and Stoney Lane.	-
H21	Hawthorn, elder, sycamore	Remove section refer to drawing AIA04 Stainfield Lane Junction - Zone D West AIA 4 of 5	-



Detail 1 - Tree Protection Fencing (NTS)

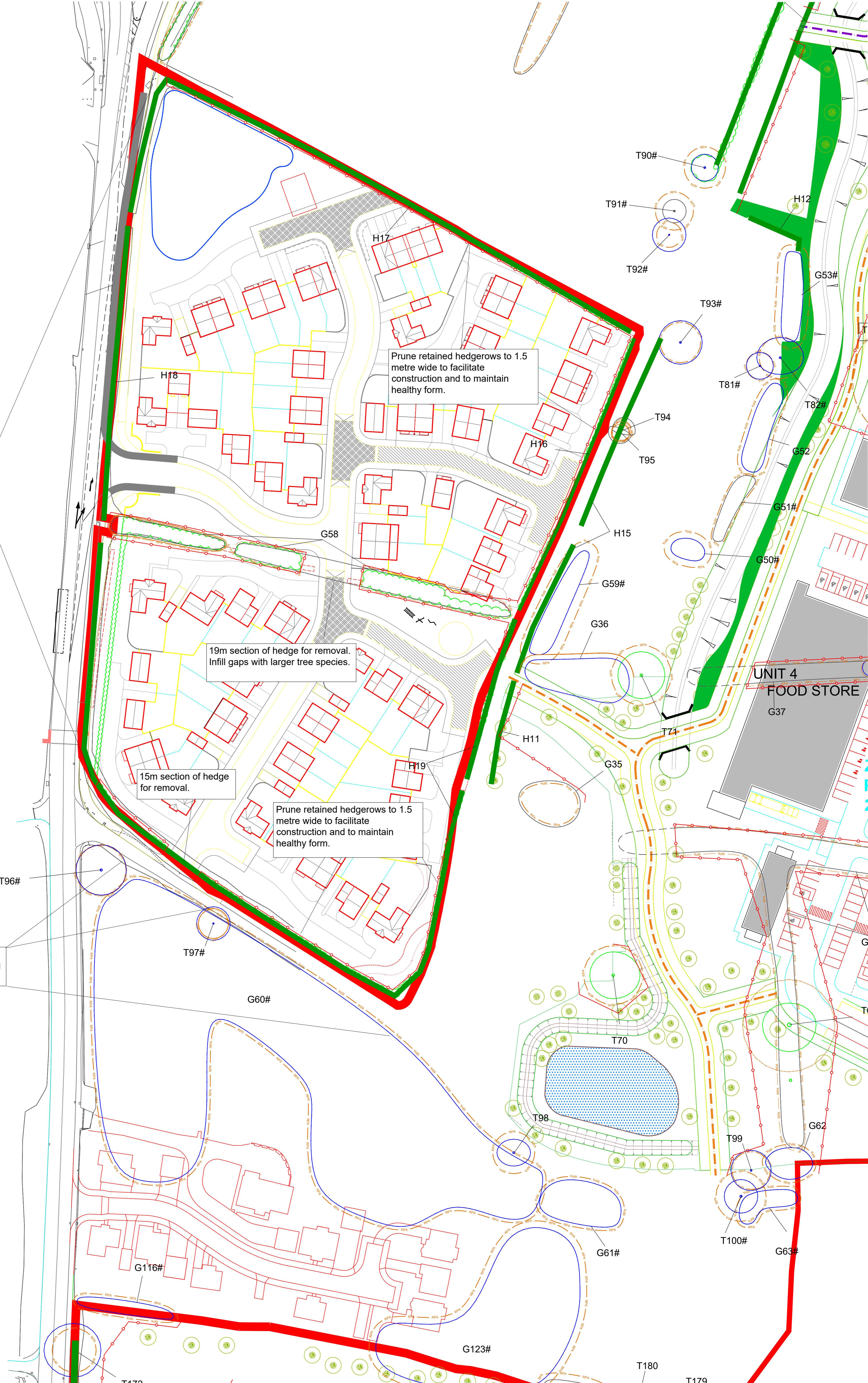
Hedge for removal and replanting along Stanfield Lane for Highway and public footpath development.

19m section of hedge for removal. Infill gaps with larger tree species.

15m section of hedge for removal.

Prune retained hedgerows to 1.5 metre wide to facilitate construction and to maintain healthy form.

Selective pruning of trees along Stoney Lane which may overhang the highway to 5.2m high.



Key

- Existing hedge
- Existing vegetation
- Tree retention category A: High quality with an estimated life expectancy of at least 40 years
- Tree retention category B: Moderate quality with an estimated life expectancy of at least 20 years
- Tree retention category C: Low quality with an estimated life expectancy of at least 10 years OR young tree with a stem diameter below 150mm
- Tree category U: Poor condition with an estimated life expectancy of less than 10 years
- RPA: Minimum Root Protection Area
- Proposed tree removal: To facilitate development. Refer to drawing number AIA05 for tree removal schedule.
- Proposed tree removal: Due to poor condition. Refer to drawing number AIA05 for tree removal schedule.
- Approximate location
- Veteran tree
- Statutory Protection: TPO (Tree Preservation Order), Conservation Area, Important Hedgerow etc.
- Tree protection fencing: see Detail 1 and method statement

Trees have been surveyed and categorized as per the recommendations and guidance in BS 5837:2012 Trees in relation to design, demolition and construction.

This drawing is to be read in conjunction with the Arboricultural Survey report.

This drawing is to be reproduced in colour.

FOR INFORMATION

Rev.	Date	Comments	KS	MS
B	17.01.2023	Addition of Zone E	KS	MS
A	02.12.2022	Updates to tree removals	KS	MS

SMEEDEN FOREMAN
Landscape Architecture • Ecology • Arboriculture

Project: Lancashire Central
Title: Zone E Arboricultural Impact Assessment 6 of 6

Project No. SF 3236 | Drawing No. AIA06 | Rev. B

Scale: 1:500 @ A0 | Date: 21.11.2022

Drawn by: KS | Checked by: MS

The details shown on this drawing are confidential and the drawing is the exclusive property of Smeeden Foreman Limited. Copyright reserved. No part of this drawing or the contents may be made without our permission and it is to be returned to Smeeden Foreman Limited when required. Smeeden Foreman Limited shall not be responsible for the use of this drawing for any purpose other than that which was intended. All dimensions shall be verified on site prior to commencement of works. Do not scale from this drawing. All works must be in accordance with British Standards, EC Directives, Health & Safety at work and all other relevant regulations & Best Practice. The attention of Smeeden Foreman Limited is drawn to the fact that the client is responsible for the accuracy of the information provided.