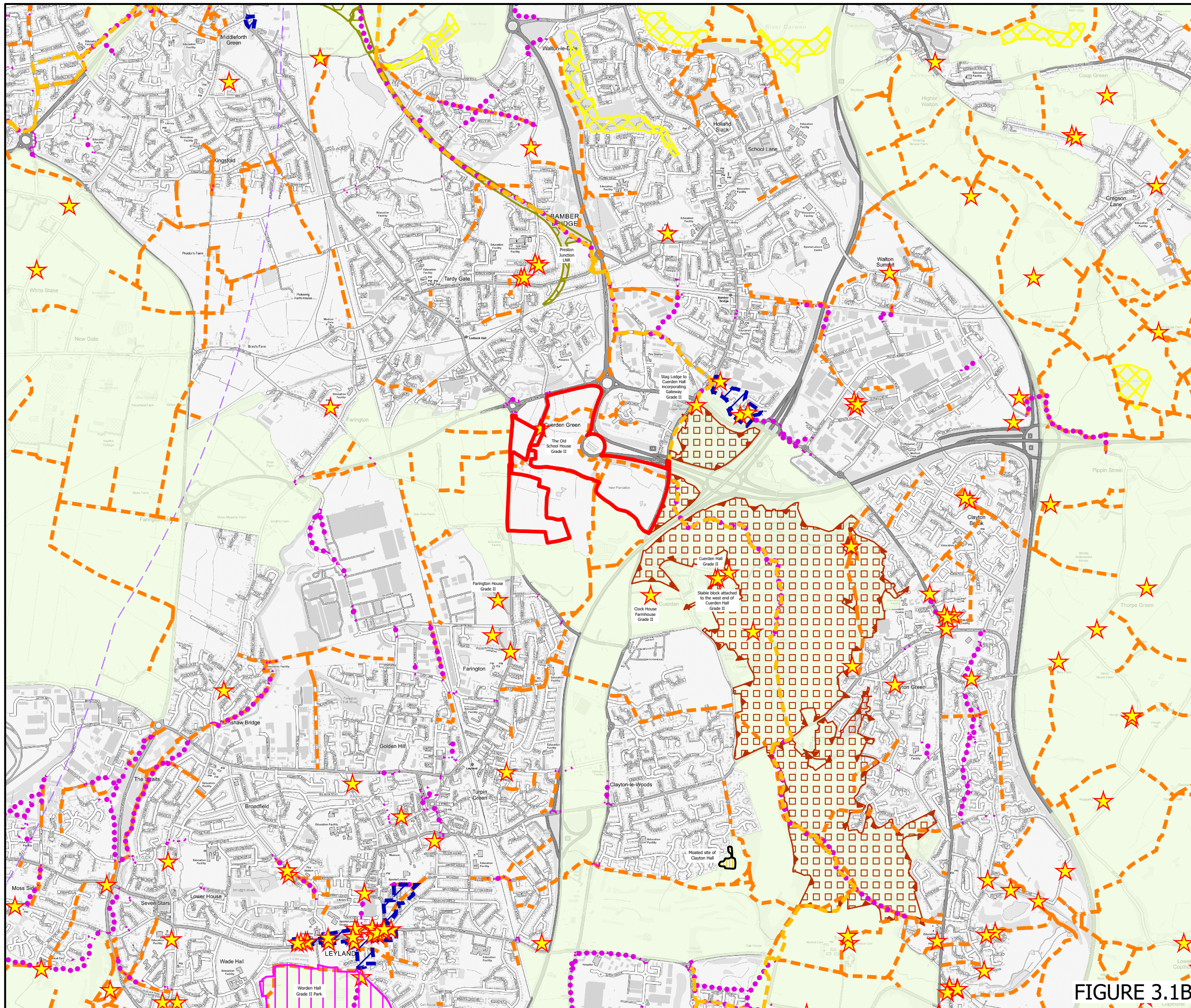
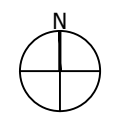


**FIGURE 3.1B:  
FEATURES PLAN (DESIGNATIONS)**



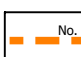








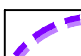





The scaling of this drawing cannot be assured  
 Revision \_\_\_\_\_ Date \_\_\_\_\_ Drn \_\_\_\_\_ Ckd \_\_\_\_\_



**LEGEND**

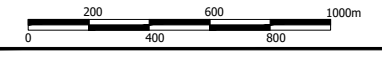
-  Site Boundary
-  Ancient Woodland #
-  Public Rights of Way \*
-  Sustrans Cycle Route +
-  Cycle Route ++
-  Listed Buildings ~
-  Scheduled Monument ~
-  Registered Parks and Gardens ~
-  Conservation Area #
-  Green Belt ^^
-  Special Protection Area, 7km Buffer #
-  Local Nature Reserve #
-  Country Park #

Sources:  
 ^ OS Mapping  
 # Natural England GIS Data Set  
 ~ Historic England National Monument Record GIS Data Set  
 \* <County Council> Definitive Map  
 + Sustrans National Cycle Network GIS Data  
 ++ Department of Transport Cycle Network Model  
 ^^ Department for Communities and Local Government GIS Data

Data collated for constraints and analysis mapping is based on publicly available sources at the time of preparation inserted using the British National Grid and may itself not be accurate. Barton Willmore shall not be liable for the accuracy of data derived from external sources.

Project  
**Lancashire Central,  
 Cuerdon**  
 Drawing Title  
**Features Plan**

Date	Scale	Drawn by	Check by
08.04.2022	1:25,000 @A3	AK	-
Project No	Drawing No	Revision	
21616	LN-E-02	A	



Town Planning • Master Planning & Urban Design • Architecture •  
 Landscape Planning & Design • Infrastructure & Environmental Planning •  
 Heritage • Graphic Communication •  
 Communications & Engagement • Development Economics

bartonwillmore.co.uk

**FIGURE 3.1B**