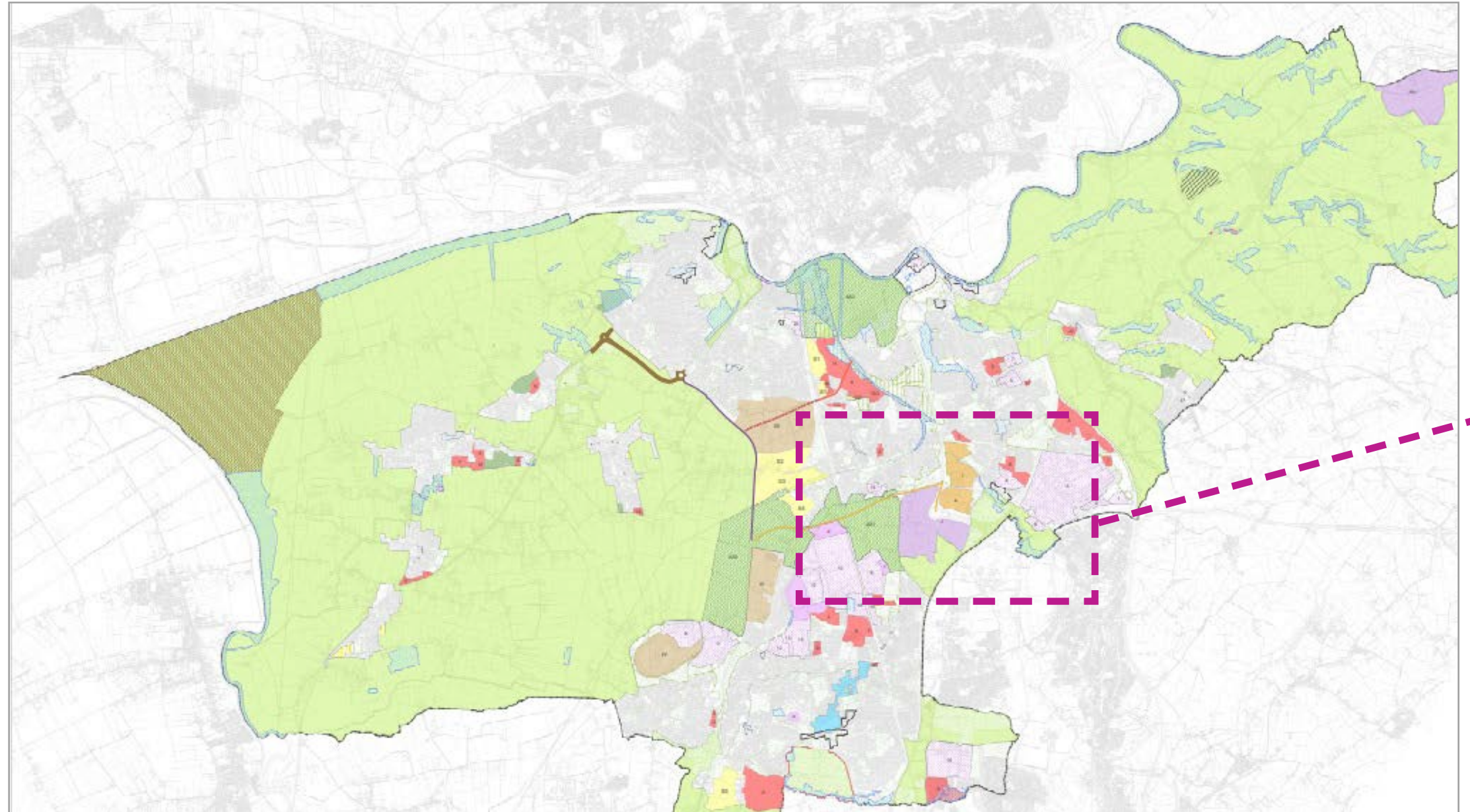


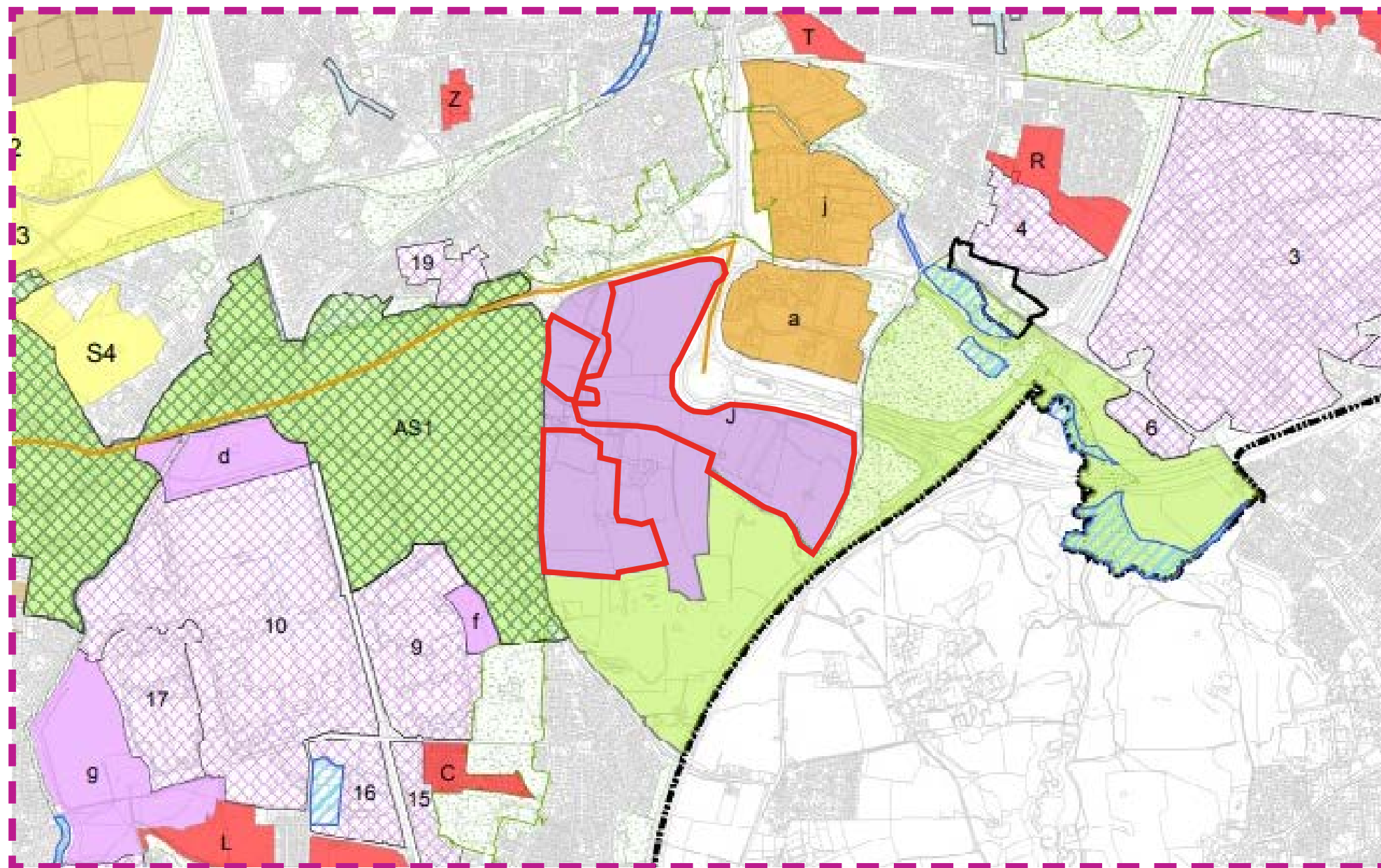
APPENDIX 7.2
LANDSCAPE PLANNING POLICY DESIGNATIONS

7.2 LANDSCAPE PLANNING POLICY DESIGNATIONS



(not to scale)

Reference: South Ribble Local Plan, South Ribble Borough Council, available from: https://www.southribble.gov.uk/media/1105/Local-Plan-policies-Map/pdf/Local_Plan_policies_Map.pdf?m=637509841377630000, accessed on 01.03.2022



Legend

- A582 to M65 Link
- A582 Dualling
- A2 Cross Borough Link Road
- A2 Potential Extension to Cross Borough Link Rd
- A3_Penwortham_Bypass_Route
- E3 - Leyland Town Centre
- E4 - District Centres
- E5 - Local Centres
- B5 Capitol Centre
- B2 Village Development
- C1 - C2 - C3 Major Sites for Development - Resid
- C4 - C5 Major Sites for Development - Employme
- G3 Safeguarded Land
- G16 Biological Heritage Sites
- G16 Sites of Special Scientific Interest
- G17 Conservation Areas
- G16 Geological Heritage Sites
- G5 Areas of Separation
- G16 Local Nature Reserves
- G16 Ramsar & S.P.A. Site
- G6 Central Park
- D1 Residential Allocations
- G7 Green Infrastructure
- In-Bev Brewery, Samlesbury
- G17 Scheduled Ancient Monuments
- G1 Green Belt
- G16 Wildlife Corridors
- G4 Protected Open Land
- G12 Green Corridors - Green Wedges
- G17 Historic Parks and Gardens
- B3 - B4 Mixed Employment and Comm
- E1 Allocations of Employment Land
- E2 Protection of Employment Areas and
- Borough Boundary
- B1 - Existing Built-Up Areas

Approximate site boundary

(not to scale)