

NOTES
Drawing for indication only. Dimensions given in millimetres (mm) unless otherwise specified. This drawing is copyright and property of Oaktree Environmental Ltd.

REVISION HISTORY

Rev:	Date:	Iss:	Description:
-	01.12.21	RS	Initial drawing
A	07.12.21	RS	Floor plans added
B	13.12.21	RS	Minor amendment

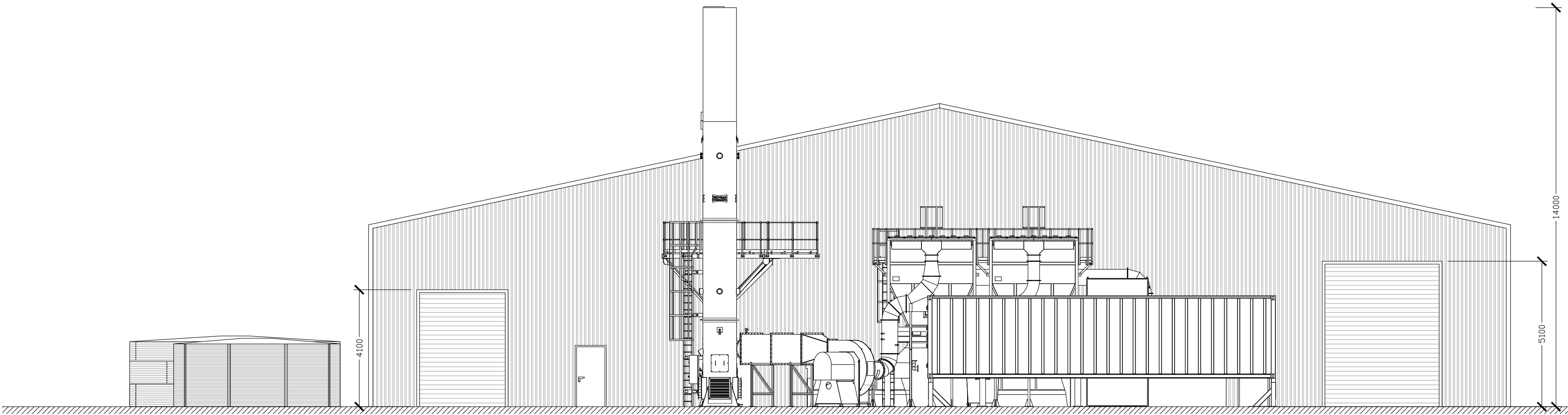


Figure 1: South-facing elevation

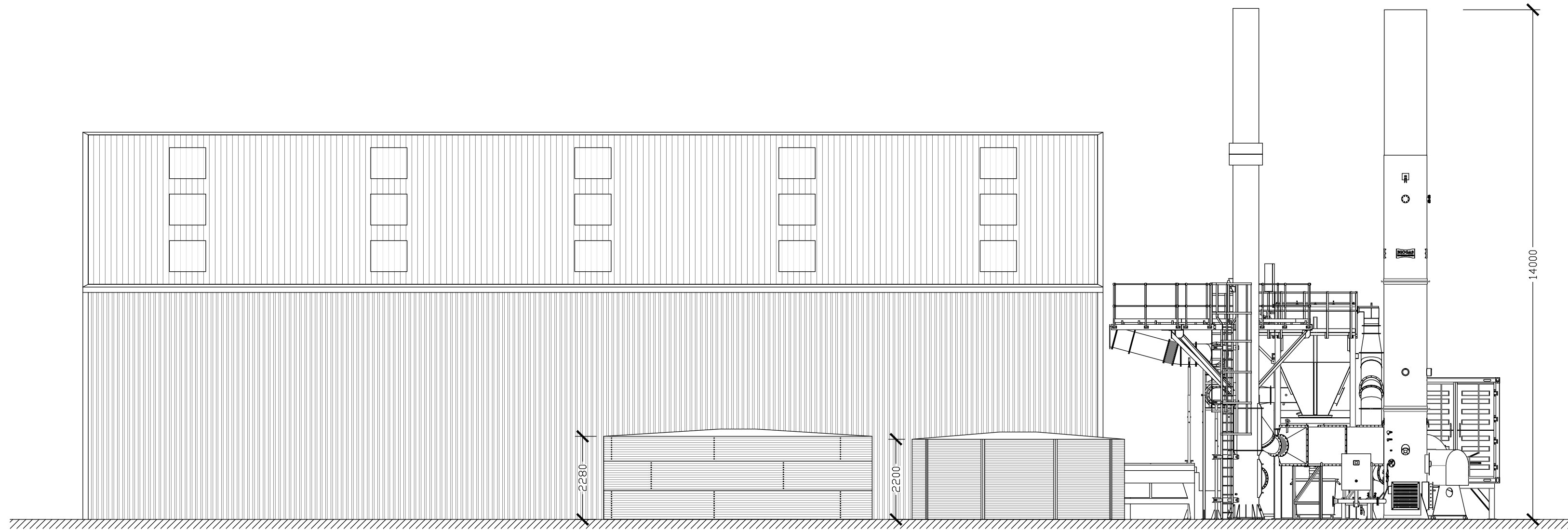


Figure 2: West-facing elevation

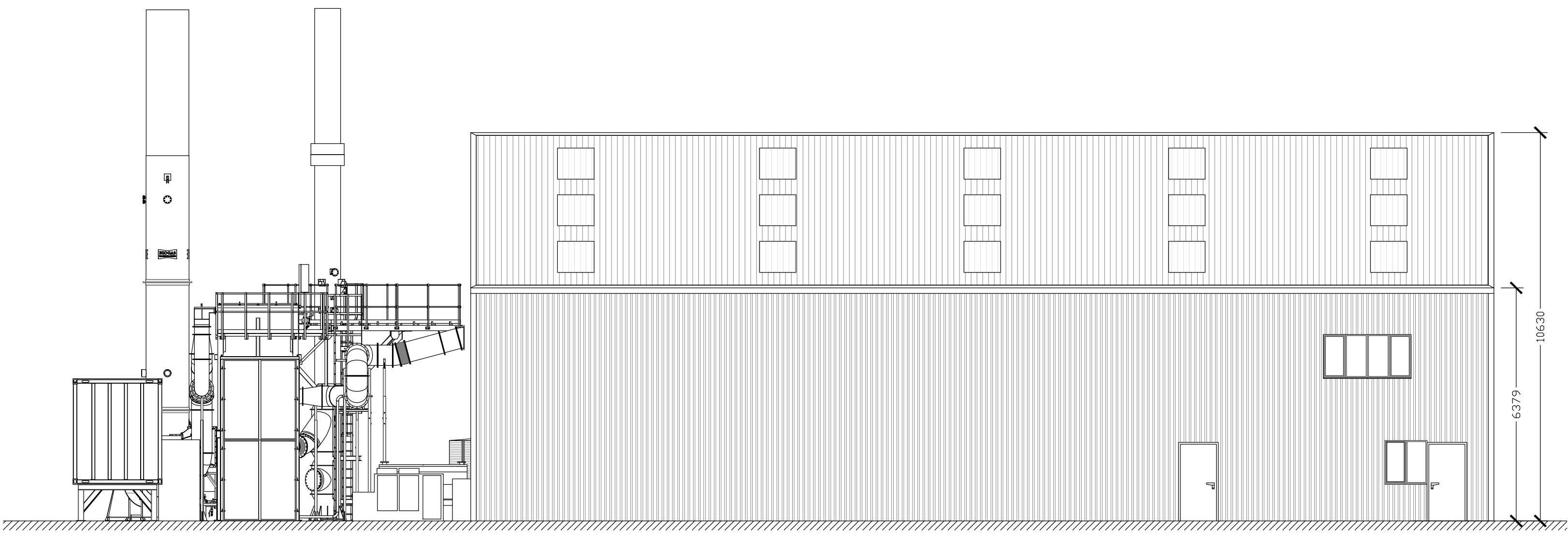


Figure 3: East-facing elevation

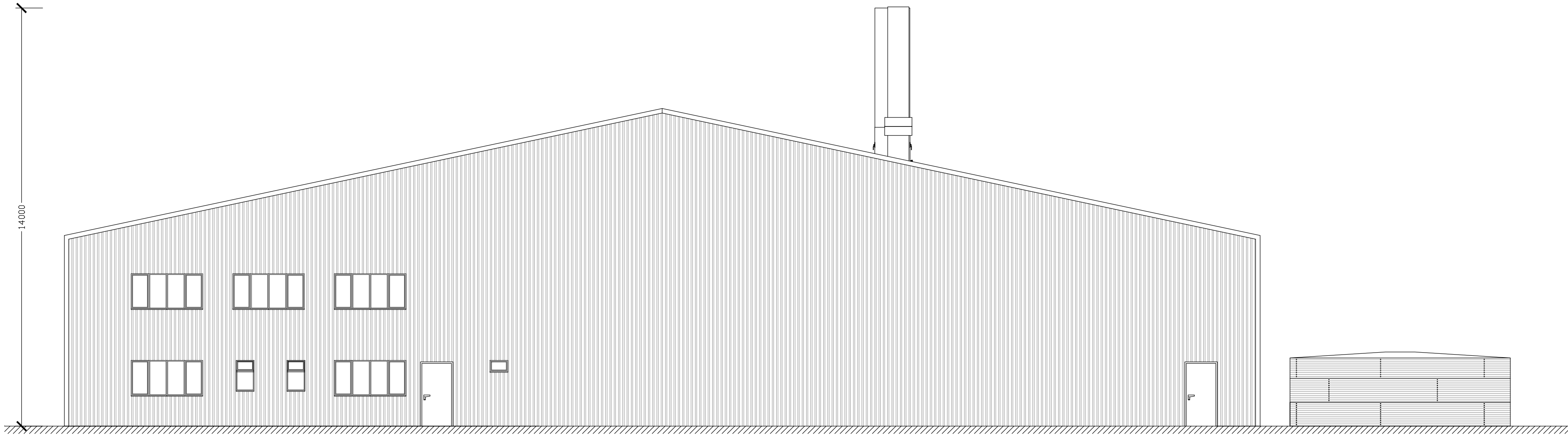


Figure 4: North-facing elevation

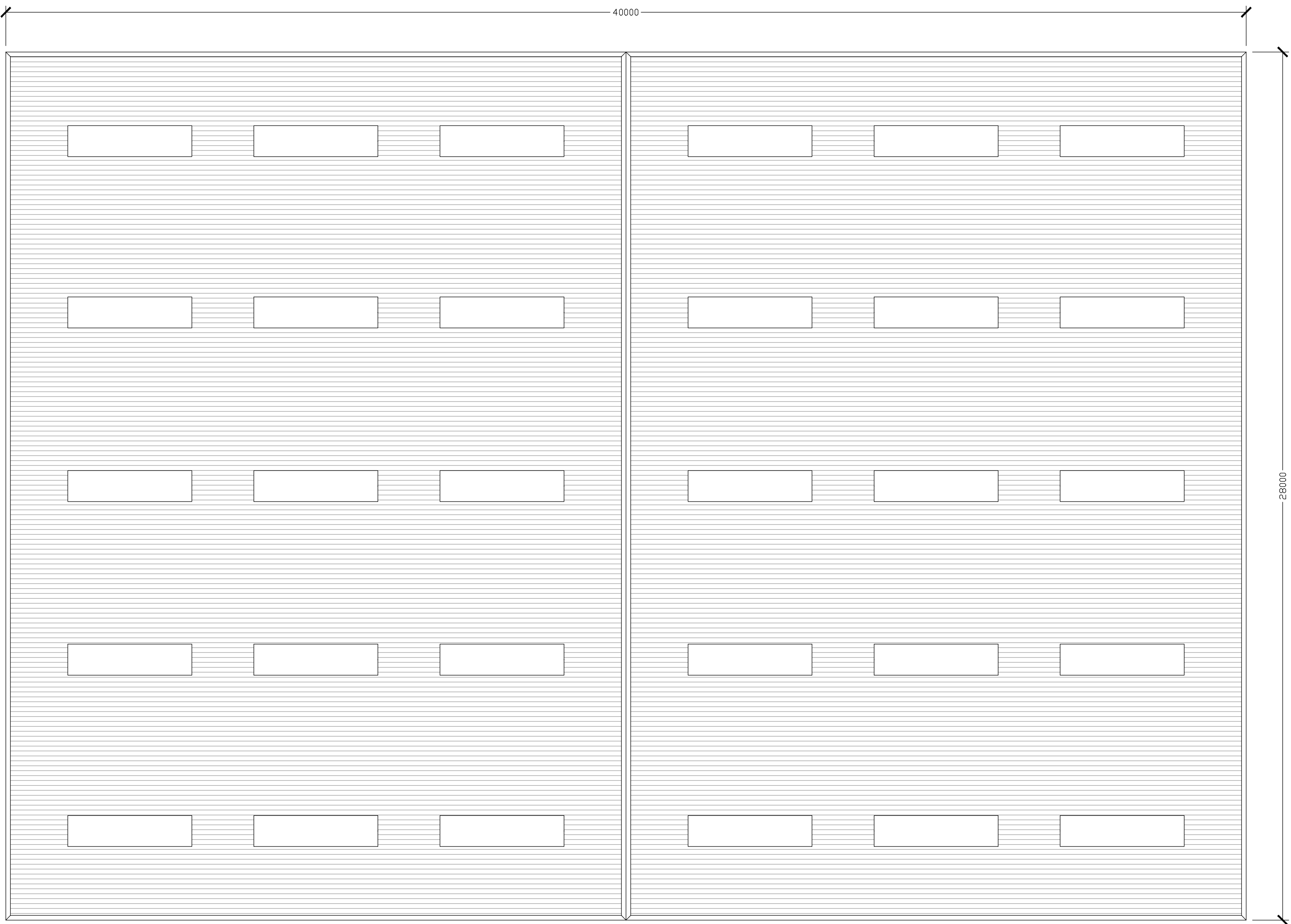


Figure 5: Roof plan

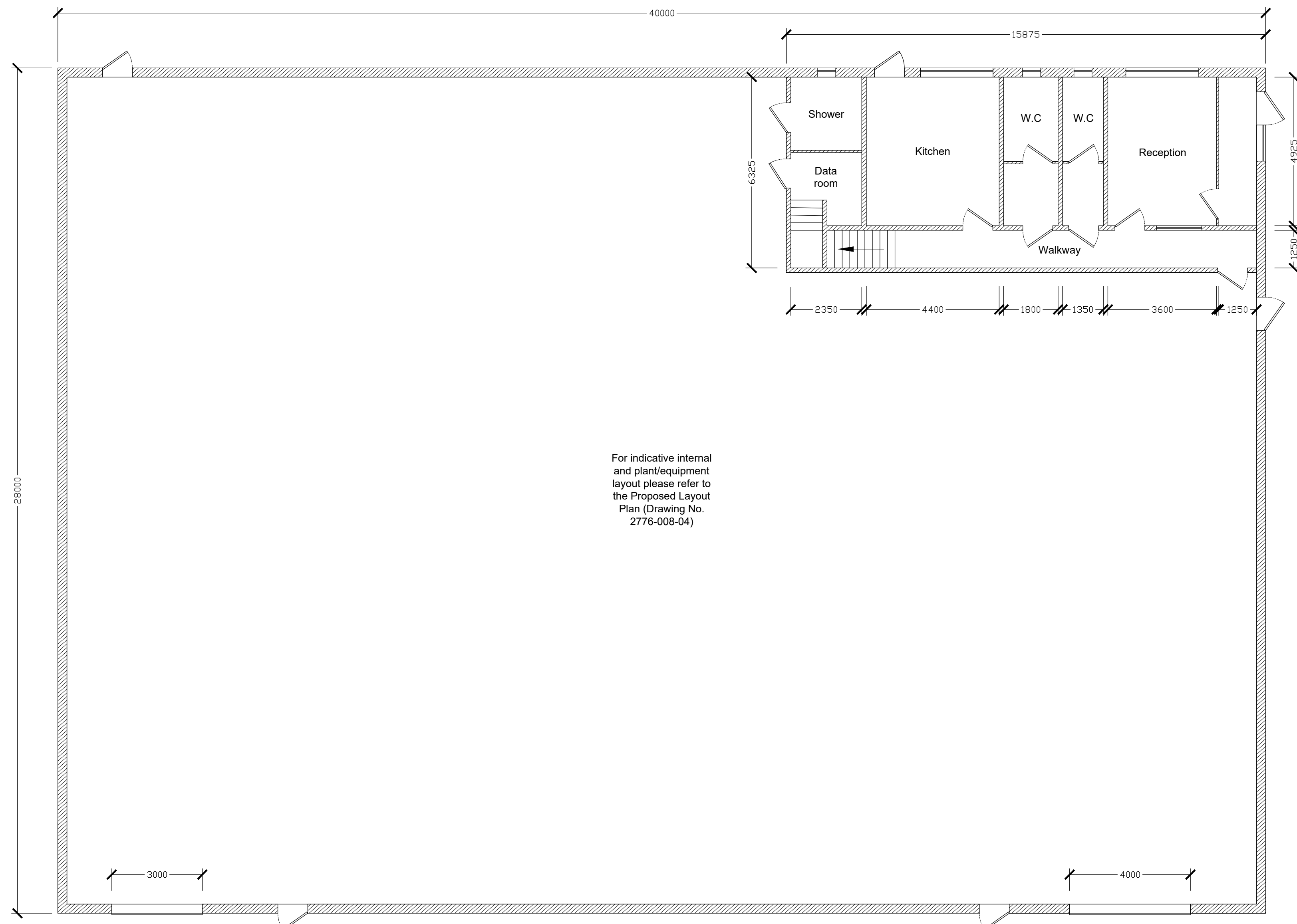


Figure 6: Ground floor plan

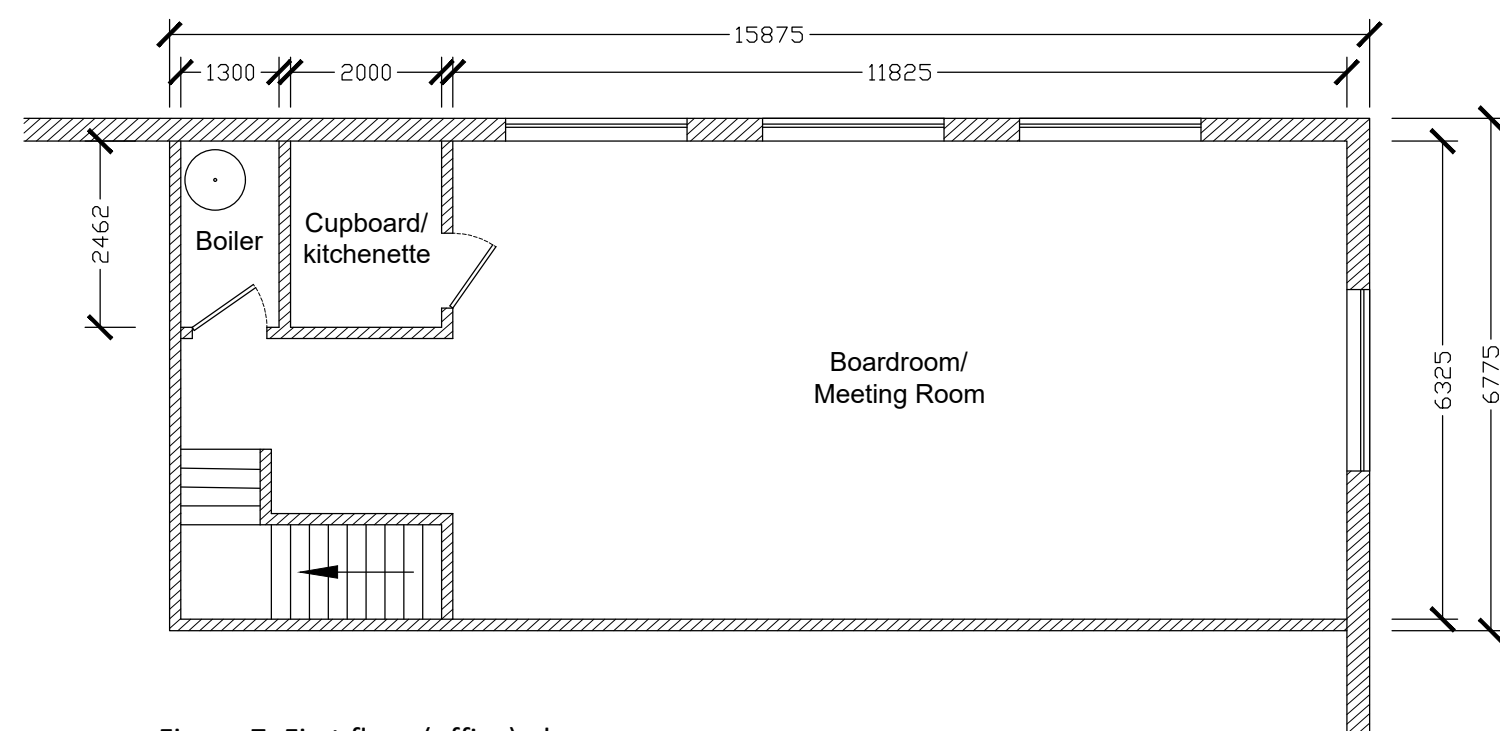
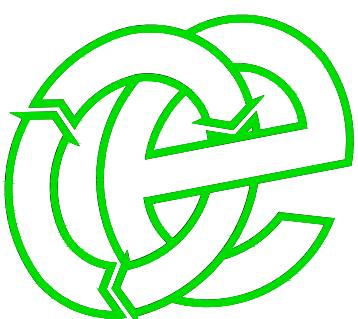


Figure 7: First floor (office) plan

Oaktree Environmental Ltd
Waste, Planning and Environmental Consultants



DRAWING TITLE
PROPOSED BUILDING DETAILS

CLIENT
Culzean WZE Limited

PROJECT/SITE
Proposed High Temperature Treatment Facility,
Stopgate Lane, Simonswood

SCALE @ A3
1:100

CLIENT NO
2776

JOB NO
008

DRAWING NUMBER
2776-008-06

REV
B

STATUS
Issued

DRAWN BY
RS

CHECKED
DTY

DATE
13.12.21

Lime House, Road Two, Winsford, Cheshire, CW7 3QZ
t: 01606 558833 | e: sales@oaktree-environmental.co.uk