

Fishwick Bottoms Plant Schedule									
Woodland Mix A									
Planted in species groups of 3 or 5 at 2.5m centres								Area (ha):	1.8
Species	Common name	Form	Age	Height	Root condition	Habit	%	Plot	
Quercus robur	Oak	Seedling	1+0	60-80cm	Cell grown	Bushy	20	576	
Ulmus glabra	Wych Elm	Seedling	1+0	60-80cm	Cell grown	Bushy	10	288	
Corylus avellana	Hazel	Seedling	1+0	60-80cm	Cell grown	Bushy	35	1008	
Crataegus monogyna	Hawthorn	Seedling	1+0	60-80cm	Cell grown	Bushy	35	1008	
							Total	2880	
Woodland Mix B									
Planted in species groups of 3 or 5 at 2.5m centres								Area (ha):	1.8
Species	Common name	Form	Age	Height	Root condition	Habit	%	Plot	
Alnus glutinosa	Alder	Seedling	1+0	60-80cm	Cell grown	Bushy	10	288	
Betula pendula	Silver Birch	Seedling	1+0	60-80cm	Cell grown	Bushy	10	288	
Betula pubescens	Downy Birch	Seedling	1+0	60-80cm	Cell grown	Bushy	10	288	
Salix caprea	Goat Willow	Seedling	1+0	60-80cm	Cell grown	Bushy	20	576	
Salix cinerea	Grey Willow	Seedling	1+0	60-80cm	Cell grown	Bushy	20	576	
Salix fragilis	Crack Willow	Seedling	1+0	60-80cm	Cell grown	Bushy	20	576	
Sambucus nigra	Elder	Seedling	1+0	60-80cm	Cell grown	Bushy	10	288	
							Total	2880	
Willow Mix									
Planted in species groups of 3 or 5 at 2.5m centres								Area (ha):	4.77
Species	Common name	Form	Age	Height	Root condition	Habit	%	Plot	
Salix caprea	Goat Willow	Seedling	1+0	60-80cm	Cell grown	Bushy	20	1524	
Salix cinerea	Grey Willow	Seedling	1+0	60-80cm	Cell grown	Bushy	20	1524	
Salix fragilis	Crack Willow	Seedling	1+0	60-80cm	Cell grown	Bushy	20	1524	
Crataegus monogyna	Hawthorn	Seedling	1+0	60-80cm	Cell grown	Bushy	10	762	
Corylus avellana	Hazel	Seedling	1+0	60-80cm	Cell grown	Bushy	10	762	
Ilex aquifolium	Holly	Seedling	1+0	60-80cm	Cell grown	Bushy	10	762	
Prunus spinosa	Blackthorn	Seedling	1+0	60-80cm	Cell grown	Bushy	10	762	
							Total	7620	

SAFETY, HEALTH AND ENVIRONMENTAL INFORMATION

In addition to the hazards/risks normally associated with the type of work detailed on this drawing, note the following

CONSTRUCTION

- 1 Chartered and unchartered services
- 2 Working close to the river, and tidal variance in water level
- 3 Working in close to live carriageway
- 4 Working close to public footways and cycleways and potential interaction with the public
- 5 Chalara disease (ash die back)

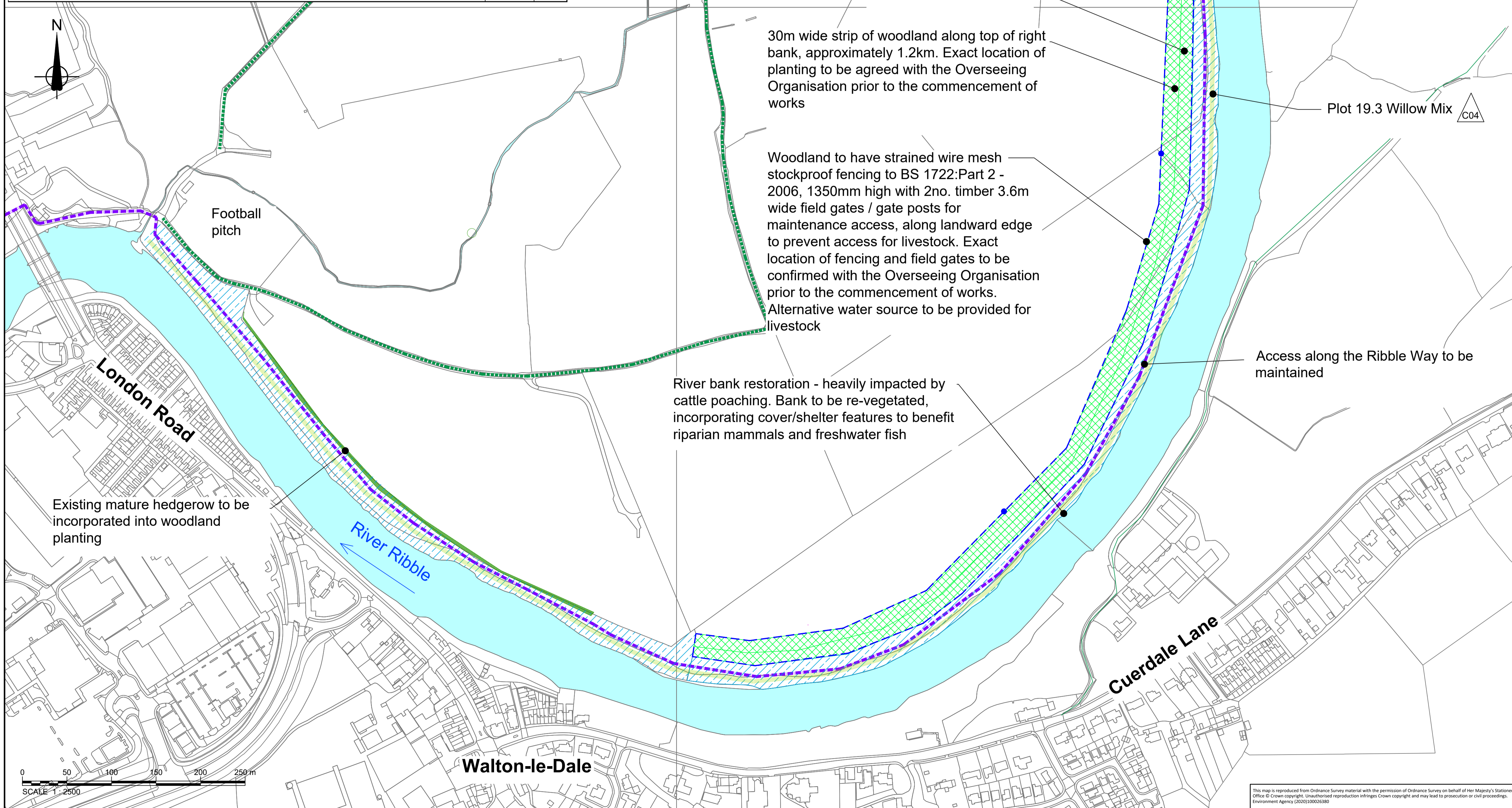
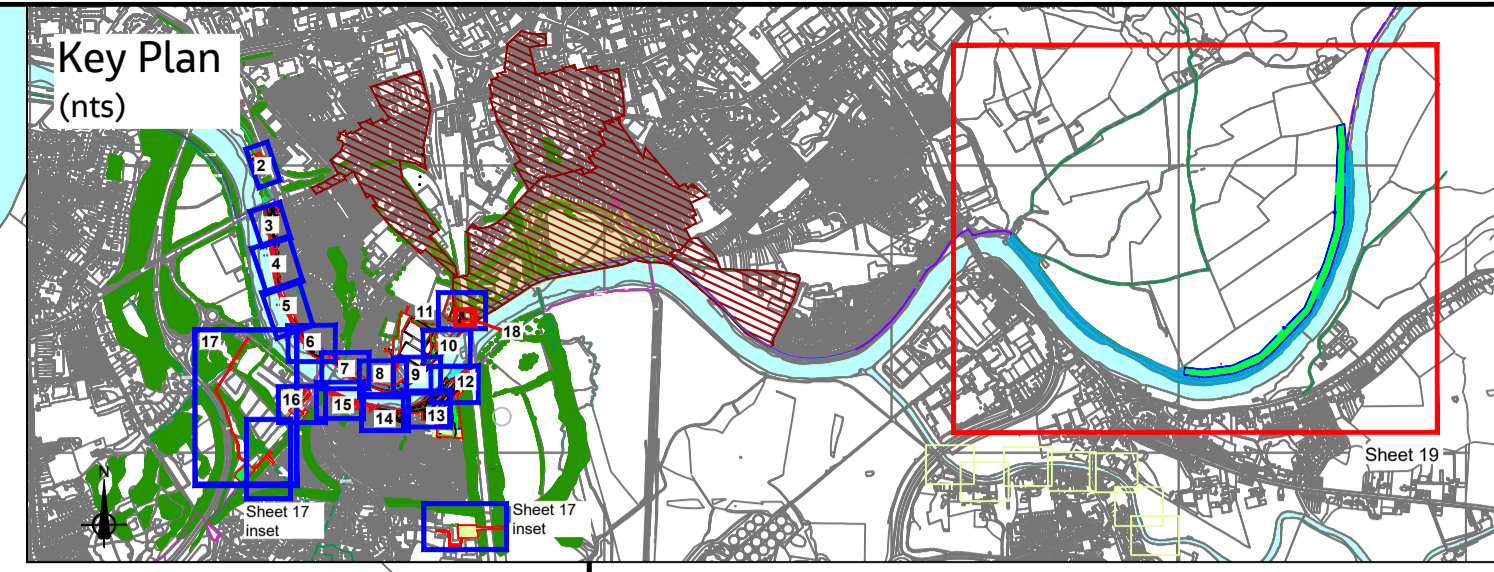
MAINTENANCE / CLEANING

- 1 Working close to the river and tidal variance in water level
- 2 Working close to live carriageway
- 3 Working close to public footways and cycleways and potential interaction with the public
- 4 Chalara disease (ash die back)

DEMOLITION / DECOMMISSIONING

- 1 Chartered and unchartered services
- 2 Working close to the river and tidal variance in water level
- 3 Working close to live carriageway
- 4 Working close to public footways and cycleways and potential interaction with the public
- 5 Chalara disease (ash die back)

It is assumed that all works will be carried out by a competent contractor working, where appropriate, to an approved method statement



Key

- Main river
- Existing mature hedgerow (subject to topographical survey)
- Ribble Way Long Distance Path
- Public Rights of Way

Proposed

- Proposed woodland (Woodland Mix A and Woodland Mix B)
- Proposed willow stakes inserted into the river bank to reduce soil erosion adjacent to the river. (Willow Mix)
- Screef mound
- Stockproof fencing
- Field gate

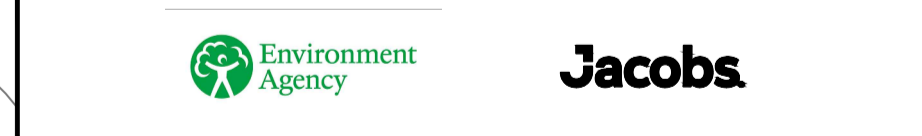
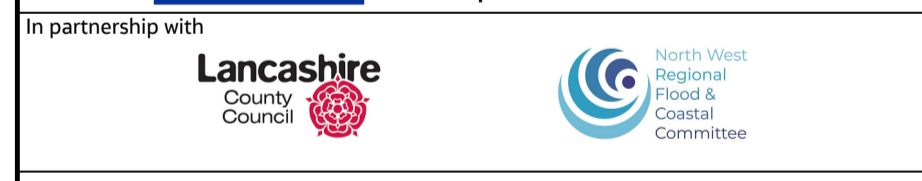
Notes:

Refer to Sheet 20 for notes applicable to the scheme.

Screef mound to be approx 1.0m wide and no greater than 0.5m high unless otherwise agreed with the Rivers Trust.

Exact location and dimensions of screef mound dependent on site conditions and to be agreed with the Rivers Trust prior to commencement of works

Rev	Rev. Date	Purpose of revision	Orig	Check'd	Rev'd	Apprv'd
C05	20.01.2022	Planning comments	AR	JE	JE	JF
C04	07.10.2021	FOR CONSTRUCTION, EA comments	AR	KR	KR	JF
C03	04.10.2021	FOR CONSTRUCTION, Rivers Trust comments	AR	MJ	MJ	JF
C02	29.06.2021	FOR CONSTRUCTION	AR	KR	KR	MW
P01	21.05.2021	WORKING DRAFT, EA COMMENTS	AR	KR	KR	MW



Project: Preston & South Ribble Flood Risk Management Scheme

Drawing title: LANDSCAPE PROPOSALS
PLANTING PLAN
SHEET 19 OF 21
FISHWICK BOTTOMS

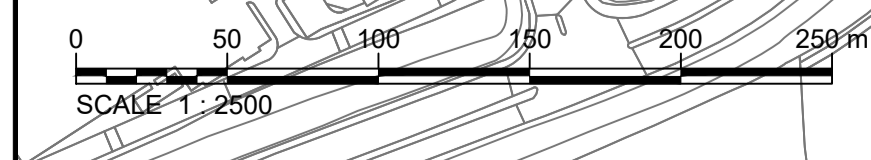
Drawing status: A5 - Authorised and accepted Stage 5 | Suitability: A5

Scale: 1:250@ A1, 1:500 @ A3 | DO NOT SCALE

Jacobs No. B550B008

Client No. ENV000009C

Drawing number: ENV000009C-JAC-ZZ-ZZ-DR-L0031



This map is reproduced from Ordnance Survey material with the permission of Ordnance Survey on behalf of Her Majesty's Stationery Office. © Crown copyright. Unauthorised reproduction infringes Crown copyright and may lead to prosecution or civil proceedings. Environment Agency (2020)10002380