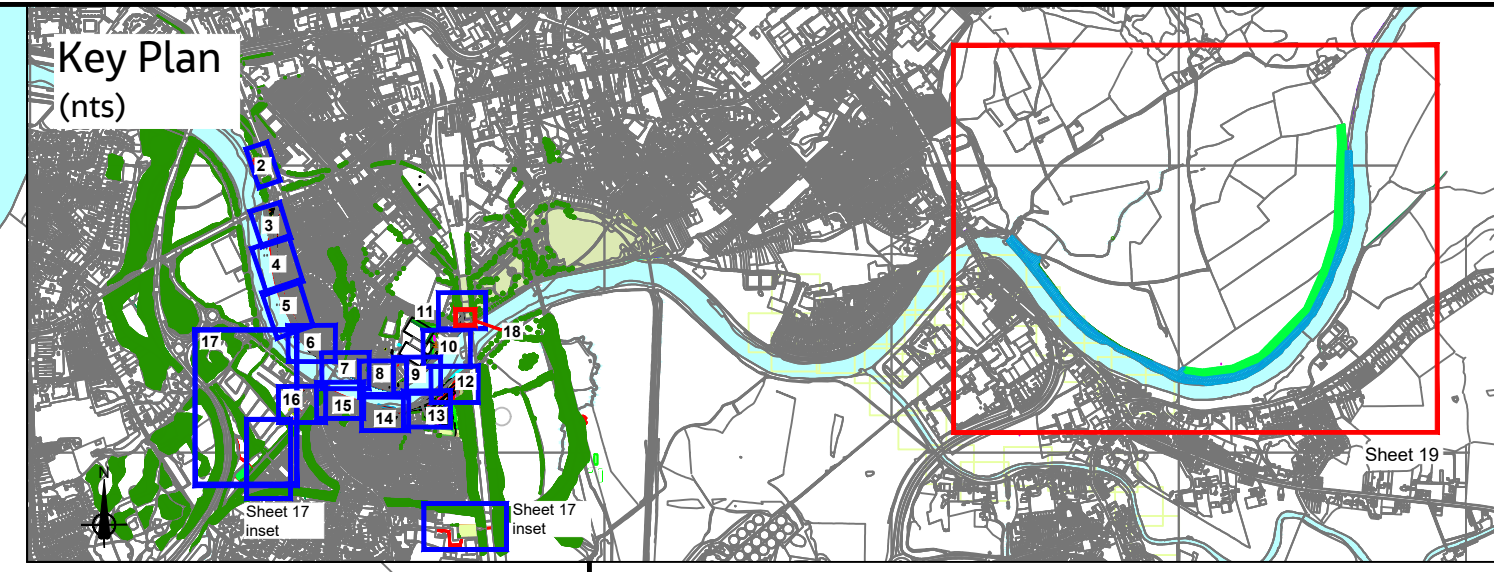
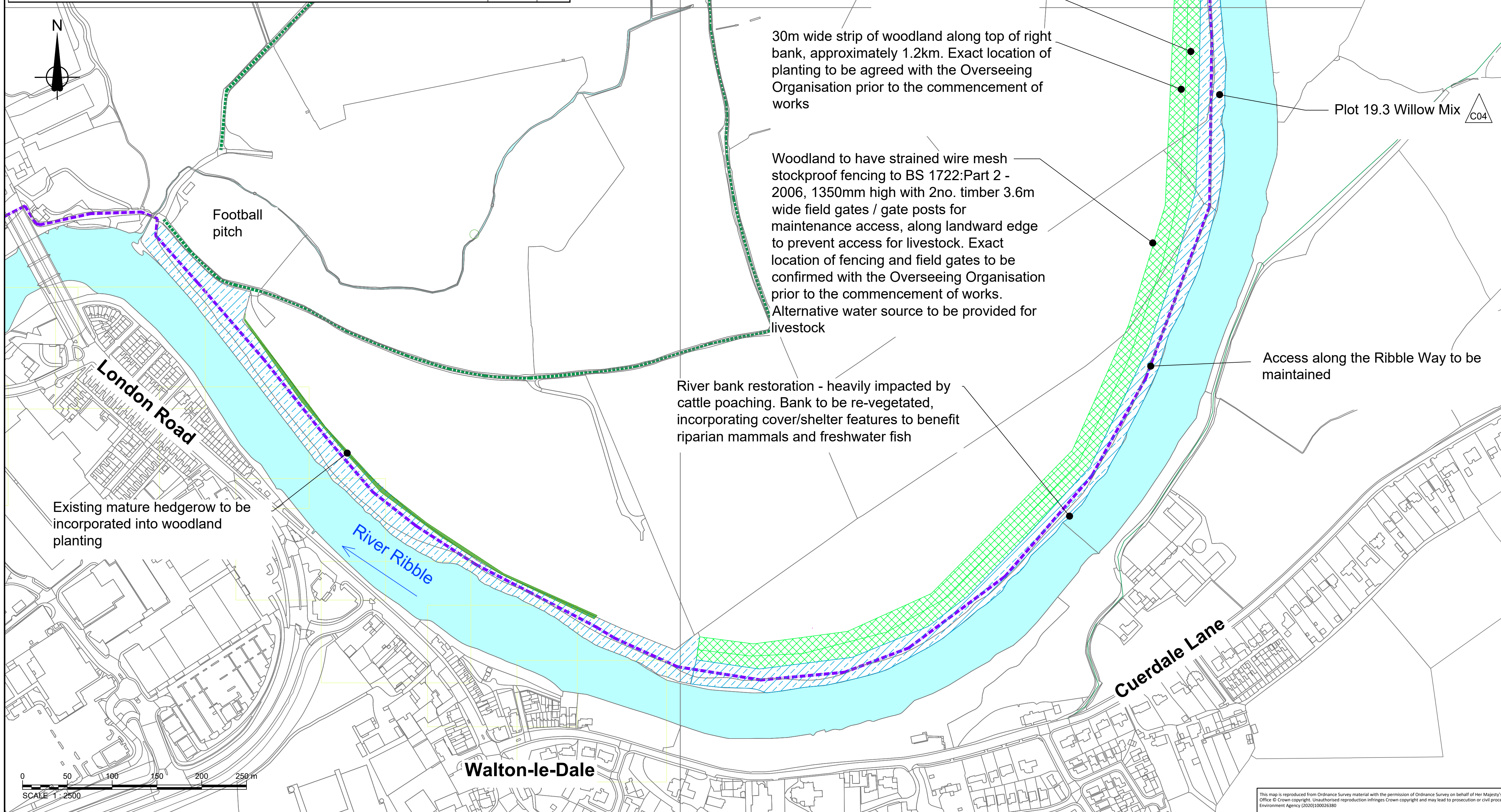


Fishwick Bottoms Plant Schedule									
Woodland Mix A									
Planted in species groups of 3 or 5 at 2.5m centres								Area (ha):	1.8
Species	Common name	Form	Age	Height	Root condition	Habit	%	Plot	
Quercus robur	Oak	Seedling	1+0	60-80cm	Cell grown	Bushy	20	576	
Ulmus glabra	Wych Elm	Seedling	1+0	60-80cm	Cell grown	Bushy	10	288	
Corylus avellana	Hazel	Seedling	1+0	60-80cm	Cell grown	Bushy	35	1008	
Crataegus monogyna	Hawthorn	Seedling	1+0	60-80cm	Cell grown	Bushy	35	1008	
								Total	2880
Woodland Mix B									
Planted in species groups of 3 or 5 at 2.5m centres								Area (ha):	1.8
Species	Common name	Form	Age	Height	Root condition	Habit	%	Plot	
Alnus glutinosa	Alder	Seedling	1+0	60-80cm	Cell grown	Bushy	10	288	
Betula pendula	Silver Birch	Seedling	1+0	60-80cm	Cell grown	Bushy	10	288	
Betula pubescens	Downy Birch	Seedling	1+0	60-80cm	Cell grown	Bushy	10	288	
Salix caprea	Goat Willow	Seedling	1+0	60-80cm	Cell grown	Bushy	20	576	
Salix cinerea	Grey Willow	Seedling	1+0	60-80cm	Cell grown	Bushy	20	576	
Salix fragilis	Crack Willow	Seedling	1+0	60-80cm	Cell grown	Bushy	20	576	
Sambucus nigra	Elder	Seedling	1+0	60-80cm	Cell grown	Bushy	10	288	
								Total	2880
Willow Mix									
Planted in species groups of 3 or 5 at 2.5m centres								Area (ha):	4.77
Species	Common name	Form	Age	Height	Root condition	Habit	%	Plot	
Salix caprea	Goat Willow	Seedling	1+0	60-80cm	Cell grown	Bushy	20	1524	
Salix cinerea	Grey Willow	Seedling	1+0	60-80cm	Cell grown	Bushy	20	1524	
Salix fragilis	Crack Willow	Seedling	1+0	60-80cm	Cell grown	Bushy	20	1524	
Crataegus monogyna	Hawthorn	Seedling	1+0	60-80cm	Cell grown	Bushy	10	762	
Corylus avellana	Hazel	Seedling	1+0	60-80cm	Cell grown	Bushy	10	762	
Ilex aquifolium	Holly	Seedling	1+0	60-80cm	Cell grown	Bushy	10	762	
Prunus spinosa	Blackthorn	Seedling	1+0	60-80cm	Cell grown	Bushy	10	762	
								Total	7620



- Key**
- Main river
 - Existing mature hedgerow (subject to topographical survey)
 - Ribble Way Long Distance Path
 - Public Rights of Way
- Proposed**
- Proposed woodland
 - Proposed willow stakes inserted into the river bank to reduce soil erosion adjacent to the river. Exact location to be confirmed.

Notes:
Refer to Sheet 20 for notes applicable to the scheme.
Willow stake, screef mound specification to be agreed with the Rivers Trust.

SAFETY, HEALTH AND ENVIRONMENTAL INFORMATION	
In addition to the hazards/risks normally associated with the type of work detailed on this drawing, note the following	
CONSTRUCTION	
1	Chartered and unchartered services
2	Working close to the river, and tidal variance in water level
3	Working in close to live carriageway
4	Working close to public footways and cycleways and potential interaction with the public
5	Chalara disease (ash die back)
MAINTENANCE / CLEANING	
1	Working close to the river and tidal variance in water level
2	Working close to live carriageway
3	Working close to public footways and cycleways and potential interaction with the public
4	Chalara disease (ash die back)
DEMOLITION / DECOMMISSIONING	
1	Chartered and unchartered services
2	Working close to the river and tidal variance in water level
3	Working close to live carriageway
4	Working close to public footways and cycleways and potential interaction with the public
5	Chalara disease (ash die back)
It is assumed that all works will be carried out by a competent contractor working, where appropriate, to an approved method statement	

C04	07.10.2021	FOR CONSTRUCTION, EA comments	AR	KR	KR	JF
C03	04.10.2021	FOR CONSTRUCTION, Rivers Trust comments	AR	MJ	MJ	JF
C02	29.06.2021	FOR CONSTRUCTION	AR	KR	KR	MW
P01	21.05.2021	WORKING DRAFT, EA COMMENTS	AR	KR	KR	MW
Rev	Rev. Date	Purpose of revision	Orig	Check'd	Rev'd	Apprv'd

European Union
European Regional Development Fund

In partnership with
Lancashire County Council
North West Regional Flood & Coastal Committee

Environment Agency
Jacobs

Project
Preston & South Ribble Flood Risk Management Scheme

Drawing title
LANDSCAPE PROPOSALS
PLANTING PLAN
SHEET 19 OF 21
FISHWICK BOTTOMS

Drawing status
A5 - Authorised and accepted Stage 5
Suitability
A5

Scale
1:250@ A1, 1:500 @ A3
DO NOT SCALE

Jacobs No.
B550B008

Client No.
ENV000009C

Drawing number
ENV000009C-JAC-ZZ-ZZ-DR-L0031

© Copyright 2021 Jacobs UK Limited. The concepts and information contained in this document are the property of Jacobs. Use or copying of this document in whole or in part without the written permission of Jacobs constitutes an infringement of copyright. Limitation: This drawing has been prepared on behalf of, and for the exclusive use of Jacobs' Client, and is issued in accordance with the provisions of the contract between Jacobs and the Client. Jacobs accepts no liability or responsibility whatsoever for or in respect of, any use of, or reliance upon, this drawing by any third party.