

Species	Common Name	Abbreviation	Form	Girth	Height	Root Condition	Total
Acer campestre	Field Maple	Ac	Heavy standard	12-14cm	3.5-4.25m	Bare root	5
Betula pendula	Silver Birch	Bp	Heavy standard	12-14cm	3.5-4.25m	Bare root	3
Sorbus aucuparia	Mountain Ash	Sau	Heavy standard	12-14cm	3.5-4.25m	Bare root	3
<b>Total</b>							<b>11</b>

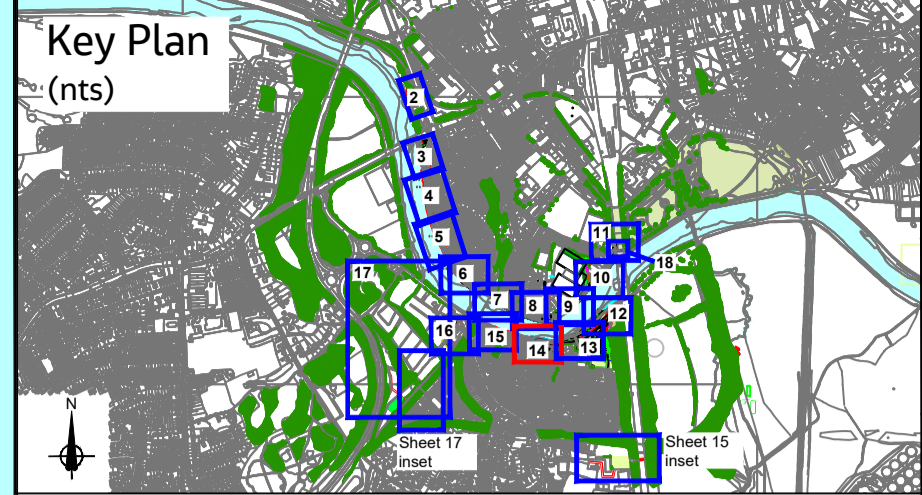
**Amenity grassland** (grass seed mix for general areas and making good)  
 Mix: EG22C - Strong lawn grass mixture with clover  
 Supplier: Emorsgate Seeds, www.wildseed.co.uk or similar approved  
 Sowing Rate: 25g/m<sup>2</sup>

%	Species	Common name
2.375	Agrostis capillaris	Common Bent
2.375	Agrostis castellana	Highland Bent
47.5	Festuca rubra	Slender-creeping Red-fescue
23.75	Lolium perenne	Perennial Ryegrass
19	Poa pratensis	Smooth-stalked Meadow-grass
5	Trifolium repens	Small Leaved White Clover

- SAFETY, HEALTH AND ENVIRONMENTAL INFORMATION**  
 In addition to the hazards/risks normally associated with the type of work detailed on this drawing, note the following
- CONSTRUCTION**
- 1 Chartered and unchartered services
  - 2 Working close to the river, and tidal variance in water level
  - 3 Working in close to live carriageway
  - 4 Working close to public footways and cycleways and potential interaction with the public
  - 5 Chalarra disease (ash die back)
- MAINTENANCE / CLEANING**
- 1 Working close to the river and tidal variance in water level
  - 2 Working close to live carriageway
  - 3 Working close to public footways and cycleways and potential interaction with the public
  - 4 Chalarra disease (ash die back)
- DEMOLITION / DECOMMISSIONING**
- 1 Chartered and unchartered services
  - 2 Working close to the river and tidal variance in water level
  - 3 Working close to live carriageway
  - 4 Working close to public footways and cycleways and potential interaction with the public
  - 5 Chalarra disease (ash die back)
- It is assumed that all works will be carried out by a competent contractor working, where appropriate, to an approved method statement

**Species-rich grassland**  
 Mix: EM2 Standard General Purpose Meadow Mixture  
 Supplier: Emorsgate Seeds, www.wildseed.co.uk  
 Sowing Rate: 4g/m<sup>2</sup>

%	Species	Common name
0.6	Achillea millefolium	Yarrow
3	Centaurea nigra	Common Knapweed
1.5	Daucus carota	Wild Carrot
3	Galium verum	Lady's Bedstraw
1.5	Geranium pratense	Meadow Crane's-bill
1.5	Knaulia arvensis	Field Scabious
3	Leucanthemum vulgare	Oxeye Daisy - (Moon Daisy)
0.2	Lotus corniculatus	Birdsfoot Trefoil
0.5	Plantago lanceolata	Ribwort Plantain
1.5	Poterium sanguisorba - (Sanguisorba minor)	Salad Burnet
0.3	Primula veris	Cowslip
3	Prunella vulgaris	Selfheal
0.2	Rhinanthus minor	Yellow Rattle
0.2	Rumex acetosa	Common Sorrel
<b>Grasses</b>		
8	Agrostis capillaris	Common Bent
28	Cynosurus cristatus	Crested Dogtail
24	Festuca rubra	Slender-creeping Red-fescue
4	Phleum bertolonii	Smaller Cat's-tail
16	Poa pratensis	Smooth-stalked Meadow-grass

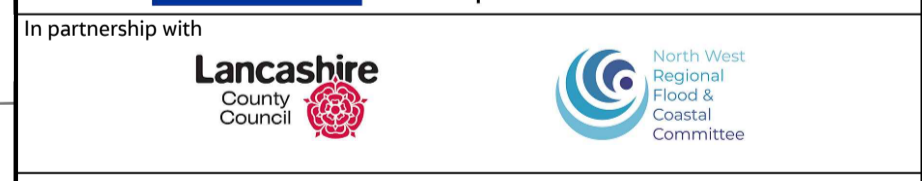


- Key**
- Main river
  - Existing vegetation (trees and shrubs subject to topographical survey)
  - National Cycle Route (NCR)
  - Public Rights of Way

- Proposed**
- Works area - replacement flood wall, embankment etc.
  - Tree and vegetation removal
  - Replacement flood wall
  - Replacement flood wall with glass panel
  - Replacement flood embankment
  - Redi-Rock
  - Tarmac surfacing
  - Tree planting
  - Specimen shrub
  - Shrub planting
  - Species rich grassland
  - Amenity grassland
  - Pre-planted coir roll to base of Redi-Rock (approx. 70m long)
  - Bollard

**Notes:**  
 Refer to sheet 20 for notes applicable to the scheme.  
 Refer to sheet 10 for Tussock Seed Mix to Redi-Rock blockwork revetment and Pre-planted Coir Roll to base of Redi-Rock plant schedules.

Rev	Rev. Date	Purpose of revision	Orig	Check'd	Rev'd	Apprv'd
C03	29.06.2021	FOR CONSTRUCTION	AR	KR	KR	MW
P02	21.05.2021	WORKING DRAFT, EA COMMENTS	AR	KR	KR	MW
P01	30.11.2020	PRELIMINARY	AR	KR	KR	MW



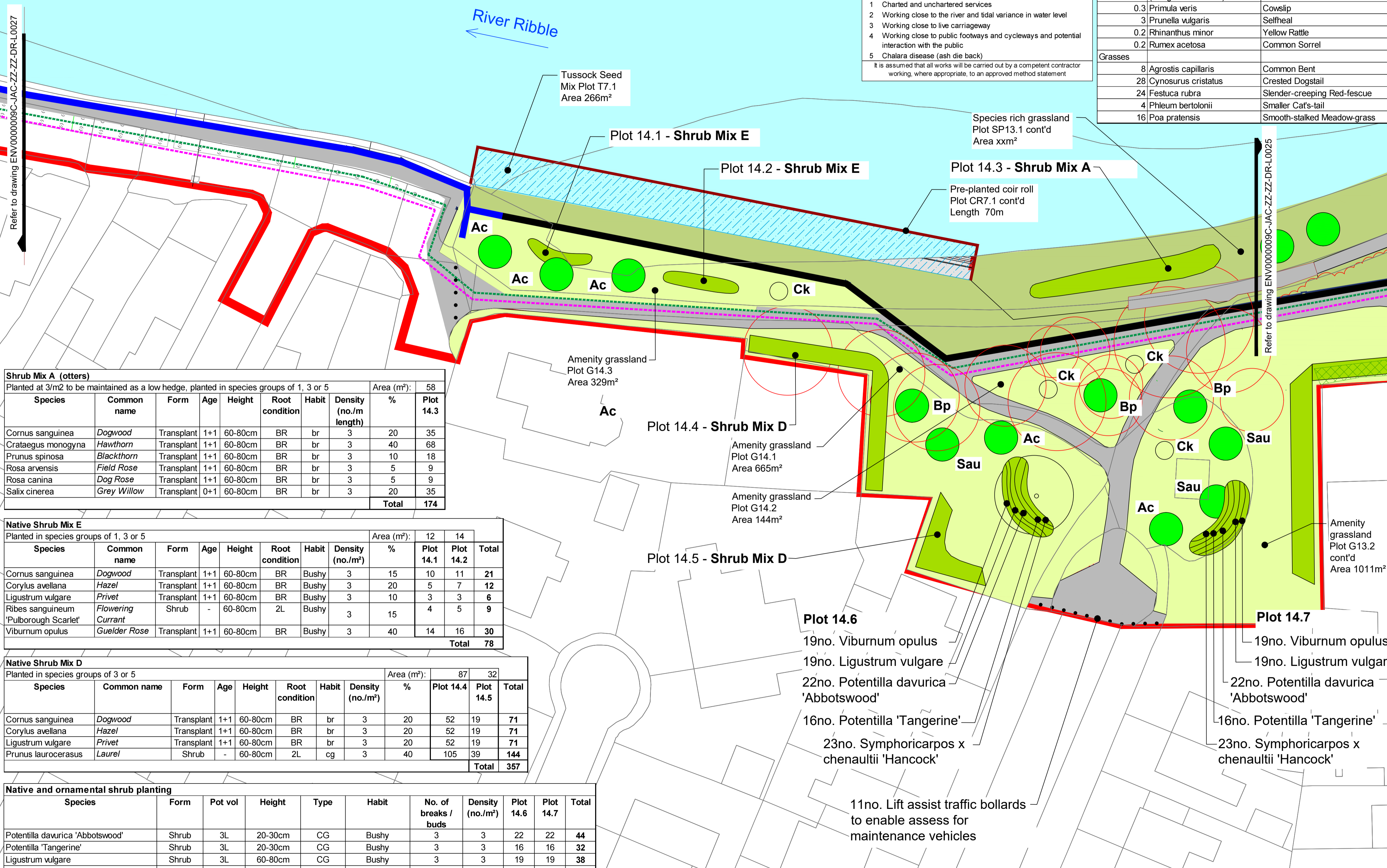
Project: Preston & South Ribble Flood Risk Management Scheme

Drawing title: LANDSCAPE PROPOSALS PLANTING PLAN SHEET 14 OF 21 - RIBBLE SIDINGS

Drawing status: A5 - Authorised and accepted Stage 5

Scale: 1:250@A1, 1:500@A3, DO NOT SCALE

Jacobs No. B550B008  
 Client No. ENV000009C  
 Drawing number: ENV000009C-JAC-ZZ-ZZ-DR-L0026



**Shrub Mix A (otters)**  
 Planted at 3/m2 to be maintained as a low hedge, planted in species groups of 1, 3 or 5

Species	Common name	Form	Age	Height	Root condition	Habit	Density (no./m length)	%	Plot 14.3
Cornus sanguinea	Dogwood	Transplant	1+1	60-80cm	BR	br	3	20	35
Crataegus monogyna	Hawthorn	Transplant	1+1	60-80cm	BR	br	3	40	68
Prunus spinosa	Blackthorn	Transplant	1+1	60-80cm	BR	br	3	10	18
Rosa arvensis	Field Rose	Transplant	1+1	60-80cm	BR	br	3	5	9
Rosa canina	Dog Rose	Transplant	1+1	60-80cm	BR	br	3	5	9
Salix cinerea	Grey Willow	Transplant	0+1	60-80cm	BR	br	3	20	35
<b>Total</b>									<b>174</b>

**Native Shrub Mix E**  
 Planted in species groups of 1, 3 or 5

Species	Common name	Form	Age	Height	Root condition	Habit	Density (no./m <sup>2</sup> )	%	Plot 14.1	Plot 14.2	Total
Cornus sanguinea	Dogwood	Transplant	1+1	60-80cm	BR	Bushy	3	15	10	11	21
Corylus avellana	Hazel	Transplant	1+1	60-80cm	BR	Bushy	3	20	5	7	12
Ligustrum vulgare	Privet	Transplant	1+1	60-80cm	BR	Bushy	3	10	3	3	6
Ribes sanguineum 'Pulborough Scarlet'	Flowering Currant	Shrub	-	60-80cm	2L	Bushy	3	15	4	5	9
Viburnum opulus	Gelder Rose	Transplant	1+1	60-80cm	BR	Bushy	3	40	14	16	30
<b>Total</b>											<b>78</b>

**Native Shrub Mix D**  
 Planted in species groups of 3 or 5

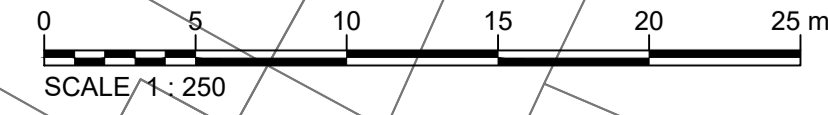
Species	Common name	Form	Age	Height	Root condition	Habit	Density (no./m <sup>2</sup> )	%	Plot 14.4	Plot 14.5	Total
Cornus sanguinea	Dogwood	Transplant	1+1	60-80cm	BR	br	3	20	52	19	71
Corylus avellana	Hazel	Transplant	1+1	60-80cm	BR	br	3	20	52	19	71
Ligustrum vulgare	Privet	Transplant	1+1	60-80cm	BR	br	3	20	52	19	71
Prunus laurocerasus	Laurel	Shrub	-	60-80cm	2L	cg	3	40	105	39	144
<b>Total</b>											<b>357</b>

**Native and ornamental shrub planting**

Species	Form	Pot vol	Height	Type	Habit	No. of breaks / buds	Density (no./m <sup>2</sup> )	Plot 14.6	Plot 14.7	Total
Potentilla davurica 'Abbotswood'	Shrub	3L	20-30cm	CG	Bushy	3	3	22	22	44
Potentilla 'Tangerine'	Shrub	3L	20-30cm	CG	Bushy	3	3	16	16	32
Ligustrum vulgare	Shrub	3L	60-80cm	CG	Bushy	3	3	19	19	38
Symphoricarpos x chenaultii 'Hancock'	Shrub	3L	40-60cm	CG	Bushy	3	5	23	23	46
Viburnum opulus	Shrub	3L	60-80cm	CG	Bushy	3	3	19	19	38
<b>Total</b>										<b>198</b>

**Specimen Shrub**

Species	Abbreviation	Form	Pot vol	Height	Type	Habit	No. of breaks	Total
Cornus kousa	CK	Shrub	30L	150-175cm	CG	Branched	5	4
<b>Total</b>								<b>4</b>



This map is reproduced from Ordnance Survey material with the permission of Ordnance Survey on behalf of Her Majesty's Stationery Office. Crown copyright. Unauthorised reproduction infringes Crown copyright and may lead to prosecution or civil proceedings. Environment Agency (2020)100026380