



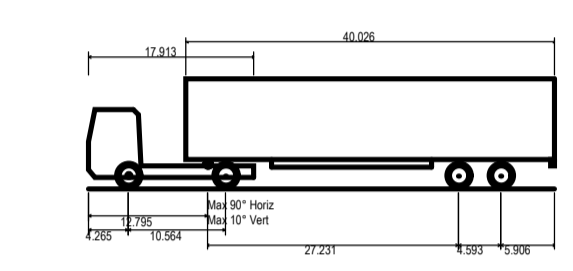
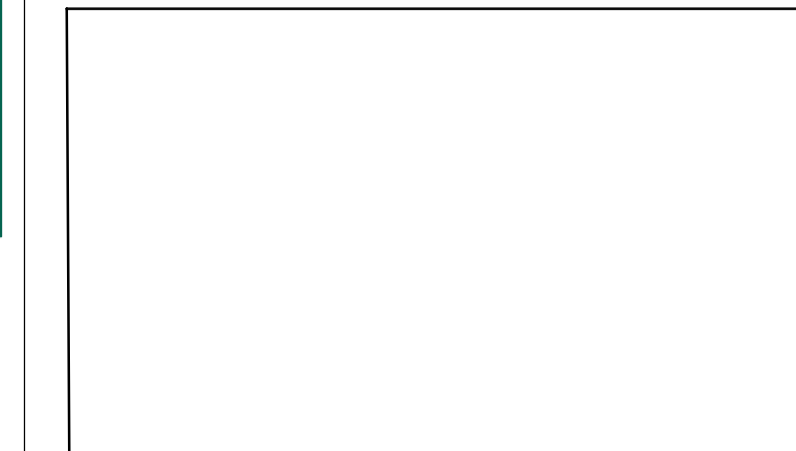
CDM: Significant Hazards

Health and Safety hazards are identified by the designer as abnormal in pursuance of the current Construction Design and Management regulations. It is assumed that all works will be carried out by competent & adequately resourced contractor(s) working to safe systems of work.

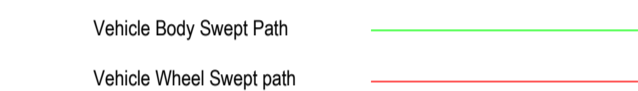


General Notes

1. DO NOT SCALE FROM THIS DRAWING FOR CONSTRUCTION. Scaling from this drawing or obtaining dimensions electronically may not provide accurate information and should be avoided, therefore work only from figured dimensions and contact JRC Consulting Engineers.
2. This drawing is to be read in conjunction with all other relevant Architects, Engineers & Specialist drawings, details, Specification and the relevant Health and Safety Plan (as appropriate to the project). All discrepancies to be reported to the Engineer immediately for verification.



Large Articulated Vehicle
 Overall Length 17.50m
 Overall Width 2.50m
 Min Body Ground Clearance 1.332m
 Max Track Width 7.750m
 Lock to lock time 6.00s
 Kerb to Kerb Turning Radius 21.686m



KEY

- Limit of works boundary (yellow dashed line)
- Stock proof fencing (black solid line)
- Public Rights of Way (PROW) (orange dashed line)
- Drainage Feature (blue solid line)

P6	10.06.21	Visibility plays added	JRC	JRC
PS	05.02.18	AS9 added	JRC	JRC
P4	14.12.17	Landscaping proposals added	JRC	JRC
P3	22.09.16	Revisions to highway proposals following comments	TR	JRC
P2	13.09.16	Revisions to highway proposals following comments	TR	JRC
P1	15.08.16	issued FOR COMMENT	TR	JRC
REV.	DATE	DETAILS	BY	CHKD.

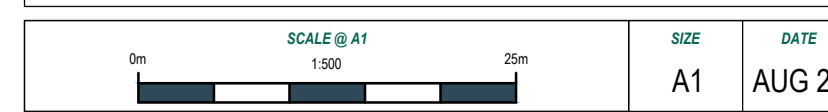


DRAWING STATUS FOR INFORMATION ONLY

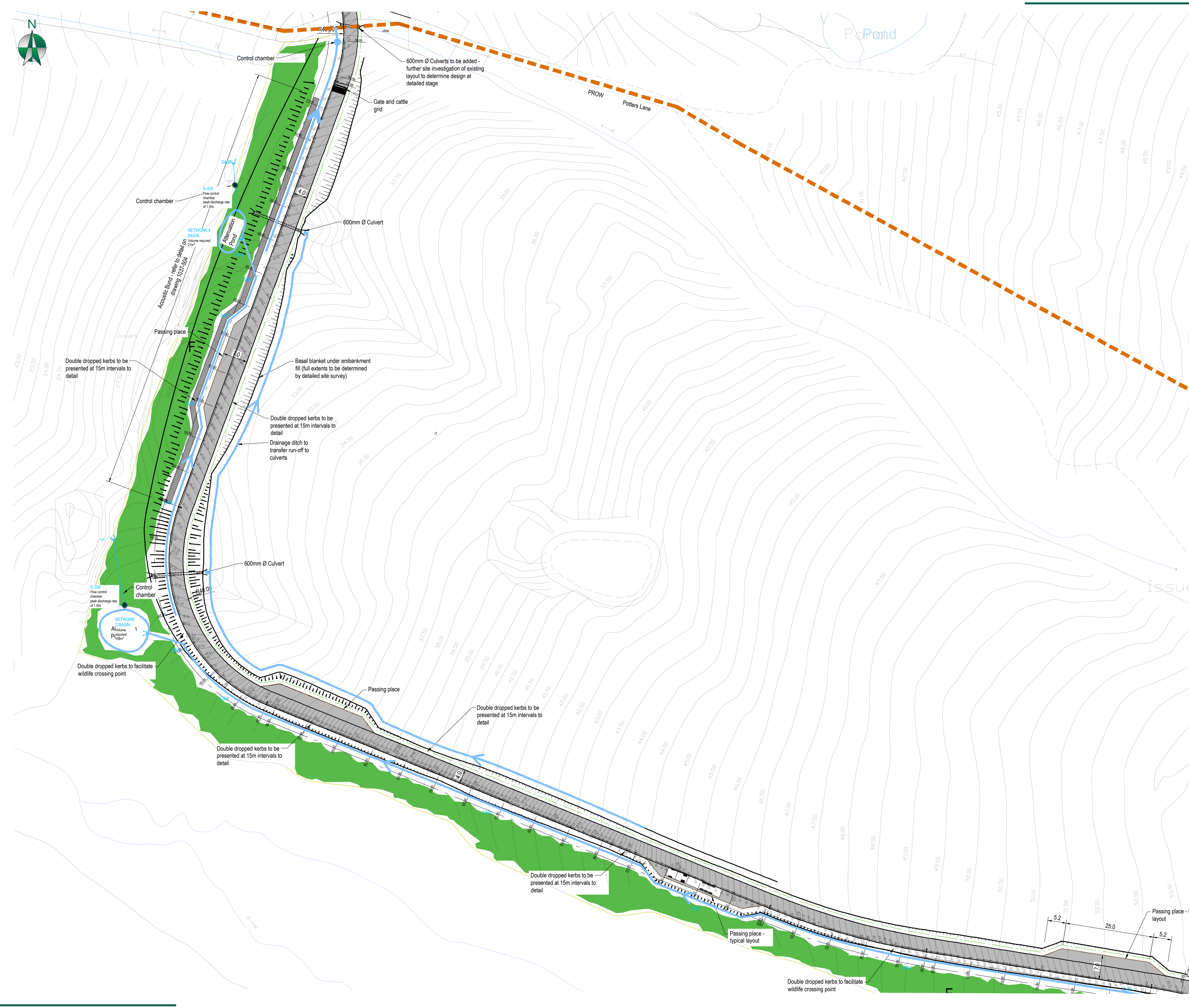
PROJECT
SAMBLESBURY WUARRY
SAMBLESBURY
PRESTON

CLIENT
MINERALS & RESOURCING & PLANNING CONSULTANTS LTD

DRAWING TITLE
HIGHWAY LAYOUT
SHEET 2 OF 3



PROJECT NUMBER	DRAWING NUMBER	REVISION
1037	504	P6



1:100 JRC CONSULTING Exeter Office: 01392 921310 Bideford Office: 01397 529332