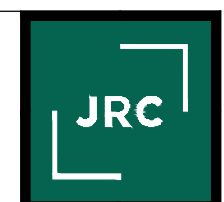


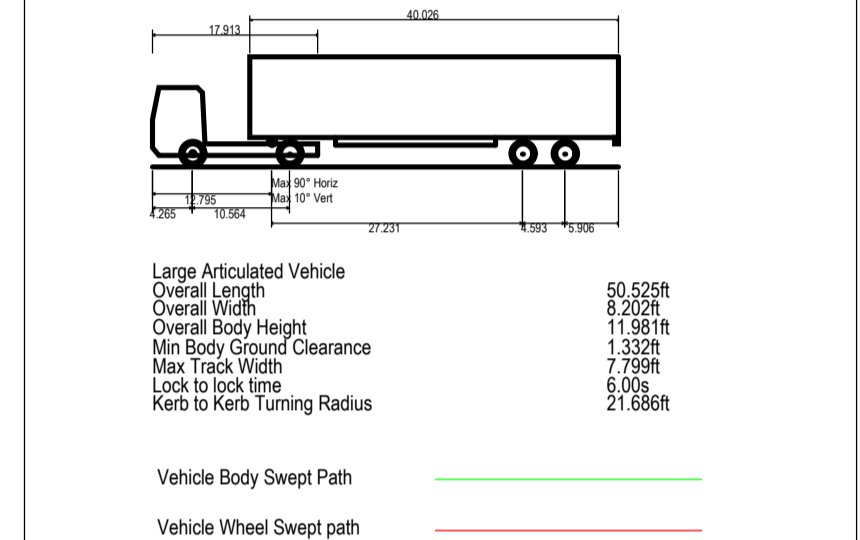
CDM: Significant Hazards

Health and Safety hazards are identified by the designer as abnormal in pursuance of the current Construction Design and Management regulations. It is assumed that all works will be carried out by competent & adequately resourced contractor(s) working to safe systems of work.



General Notes

- DO NOT SCALE FROM THIS DRAWING FOR CONSTRUCTION. Scaling from this drawing or obtaining dimensions electronically may not provide accurate information and should be avoided, therefore work only from figured dimensions and contact JRC Consulting Engineers.
- This drawing is to be read in conjunction with all other relevant Architects, Engineers & Specialist drawings, details, Specification and the relevant Health and Safety Plan (as appropriate to the project). All discrepancies to be reported to the Engineer immediately for verification.



KEY

- Limit of works boundary (yellow dashed line)
- Stock proof fencing (black dashed line)
- Public Rights of Way (PROW) (orange dashed line)
- Drainage Feature (blue line)

REV.	DATE	DETAILS	BY	CHK.
P6	10.06.21	Visibility splays added	JRC	JRC
PS	05.02.18	AS9 added	JRC	JRC
P4	14.12.17	Landscaping proposals added	JRC	JRC
P3	22.09.16	Revisions to highway proposals following comments	TR	JRC
P2	13.09.16	Revisions to highway proposals following comments	TR	JRC
P1	15.08.16	issued FOR COMMENT	TR	JRC



DRAWING STATUS

FOR INFORMATION ONLY

PROJECT

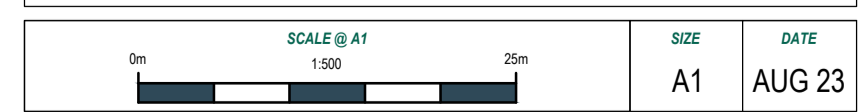
SAMLESBURY WUARRY
SAMLESBURY
PRESTON

CLIENT

MINERALS & RESOURCING & PLANNING CONSULTANTS LTD

DRAWING TITLE

HIGHWAY LAYOUT
SHEET 1 OF 3



PROJECT NUMBER	DRAWING NUMBER	REVISION
1037	503	P6

1:500 JRC CONSULTING LTD Issue 04/08/2023 PROJECT 1037 Samlesbury WUARRY/Change