

See Drawing No.1040/PL40 for continuation

Existing Woodland Areas

AREA M- hedgerow species underplanting in gaps where possible beneath existing tree canopy, to include species as described for perimeter hedging at 2m c/c in 15 groups of 10 -15 random plants.

AREA N- underplanting where possible beneath existing trees, to include species described for tree planting @ 3m c/c in 10 groups.

Trees

The new tree planting shall be planted as shown in the typical planting detail, comprising peripheral underplanting in 2 rows @ 1.5m c/cs and main tree mix @ 3m c/cs with biodegradable tree shelters with integral battens. The species shall comprise the following :-

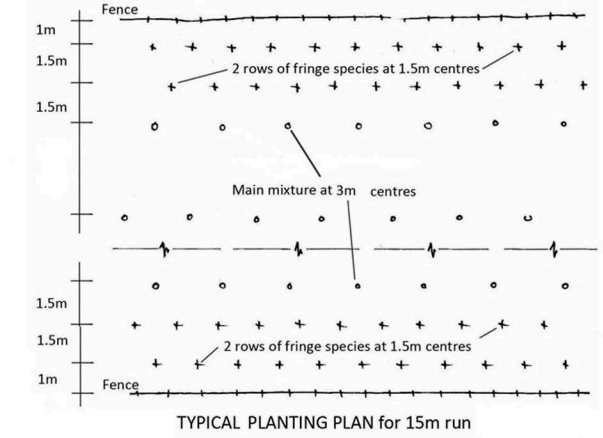
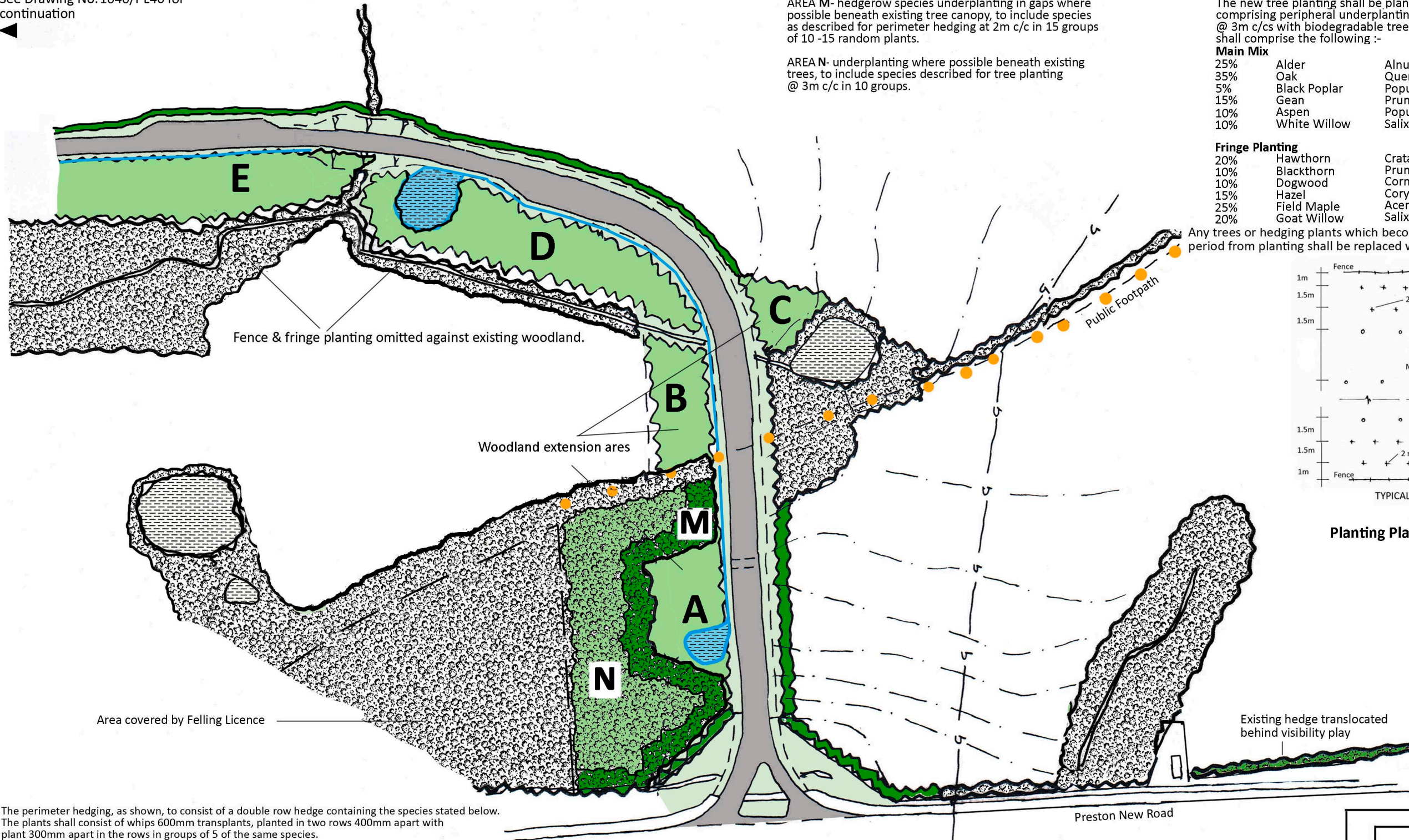
Main Mix

25%	Alder	Alnus glutinosa
35%	Oak	Quercus robur
5%	Black Poplar	Populus nigra
15%	Gean	Prunus avium
10%	Aspen	Populus tremula
10%	White Willow	Salix alba

Fringe Planting

20%	Hawthorn	Crataegus monogyna
10%	Blackthorn	Prunus spinosa
10%	Dogwood	Cornus sanguinea
15%	Hazel	Corylus avellana
25%	Field Maple	Acer campestre
20%	Goat Willow	Salix caprea

Any trees or hedging plants which become diseased, damaged, or die within a five year period from planting shall be replaced with similar and maintained.

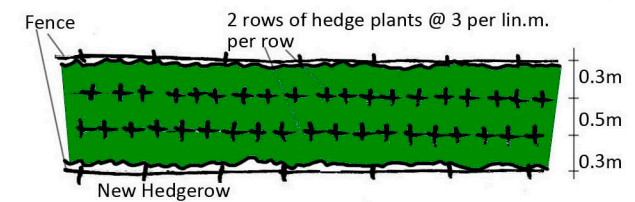


Planting Plan and details for Tree areas A to E incl.



The perimeter hedging, as shown, to consist of a double row hedge containing the species stated below. The plants shall consist of whips 600mm transplants, planted in two rows 400mm apart with plant 300mm apart in the rows in groups of 5 of the same species. Planting shall be undertaken from November to March in weed free soil, the plants are to be protected with plastic spiral rabbit guards.

Hawthorn	Crataegus monogyna	50%
Field Maple	Acer Campestre	20%
Hazel	Corylus Avellana	10%
Blackthorn	Prunus spinosa	10%
Dogwood	Cornus sanguinea	10%



Hedge plants of Hawthorn (40%), Blackthorn (20%), Field Maple (30%), Dogwood (10%).
Plants to be 60-90cm high protected by rabbit guards/tree shelters
Field maple and dogwood to be planted in random groups of 5-9 within thorn matrix.

Preston New Road

Existing hedge translocated behind visibility play

LOWER HALL FARM, SAMLESBURY
PRESTON, LANCASHIRE
PROPOSED SAND AND GRAVEL EXTRACTION
FOR HARLEYFORD AGGREGATES LIMITED
LANDSCAPE & VISUAL IMPACT ASSESSMENT

RICHARD PAYNE CMLI
Chartered Landscape Architect
20 Were Close, Warminster, Wiltshire, BA12 8TB
1/1,000 scale ROADSIDE PLANTING PLAN (Sheet 1)
at A3

For details of access road and junction see drawings produced by Paul Carpenter Associates.

Drawing No.1040/PL39	Rev.	Date
		19th April 2019