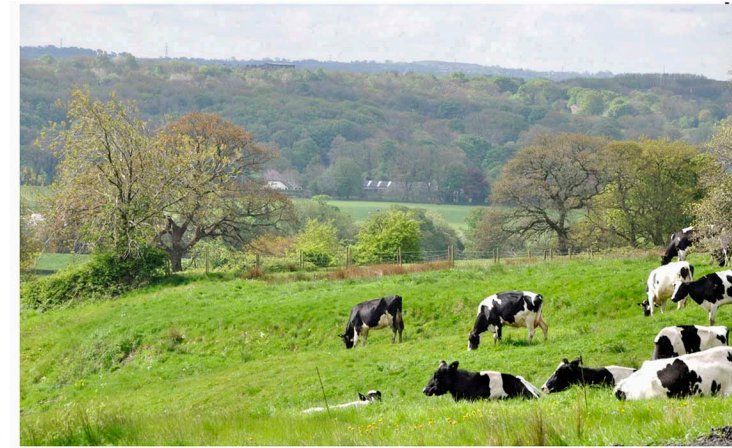
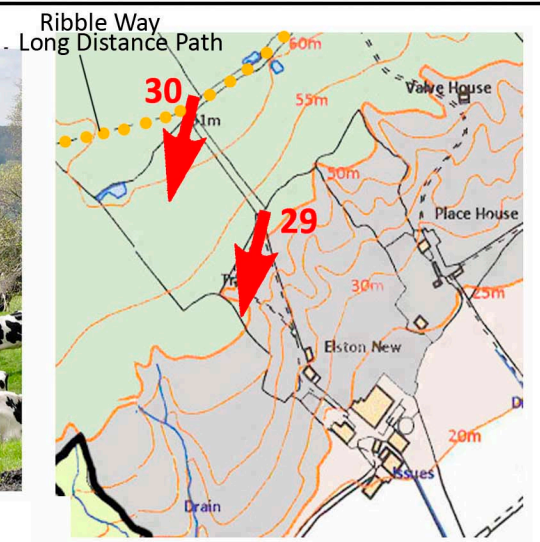


VIEWPOINT 29 - looking south west on private road to Elston New Farm



Zoom lens view from Viewpoint 29 towards Lower Hall Farm



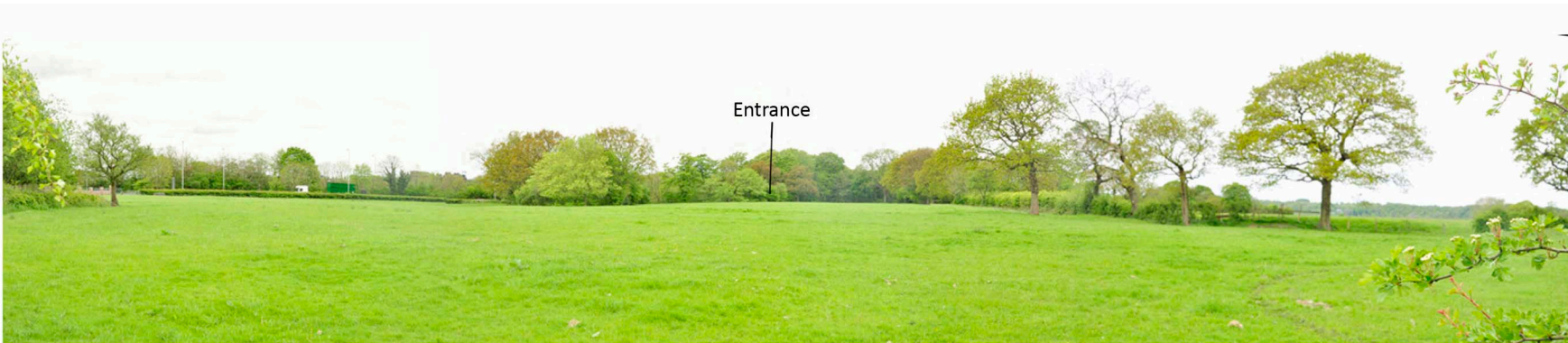
VIEWPOINT 30 - looking over hedge at stile on 'Ribble Way' long distance path



VIEWPOINT 31 - view from public footpath to copse in field adjacent site entrance



VIEWPOINT 32 - view from public footpath looking south to proposed site entrance



VIEWPOINT 33 - view from public footpath looking to site entrance

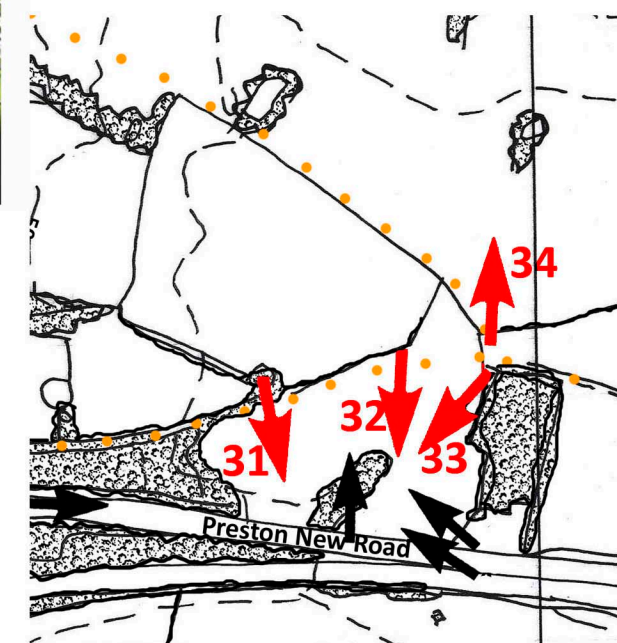


VIEWPOINT 34 - gate on route of public footpath

**VISUAL IMPACT ASSESSMENT**

Viewpoints 29 and 30 are taken from the public areas on the northern side of the River Ribble valley near Elston New Farm at a distance of approx. 1.5km. From these locations the Application Site is located behind the ground formation to the right of the view and it is out of sight. Similarly the new access route is not visible. **No potential visual impact.**

Viewpoints 31 - 33 are taken in the field where the proposed site entrance is located from the east/west public footpath. **High potential visual impact at crossover point and within field.**



PHOTOGRAPH LOCATION PLAN

Revised.	Date.	Details.
A	24.4.19	

LOWER HALL FARM, SAMLESBURY  
PRESTON, LANCASHIRE  
PROPOSED SAND AND GRAVEL EXTRACTION  
FOR HARLEYFORD AGGREGATES LIMITED  
LANDSCAPE & VISUAL IMPACT ASSESSMENT

RICHARD PAYNE. CMLI  
Chartered Landscape Architect  
20 Were Close, Warminster, Wiltshire, BA12 8TB  
VISIBILITY PHOTOGRAPH SHEET 5  
at A3

Drawing No.987/PL34	Rev. A	Date 14th November 2015
---------------------	--------	-------------------------