









KEY

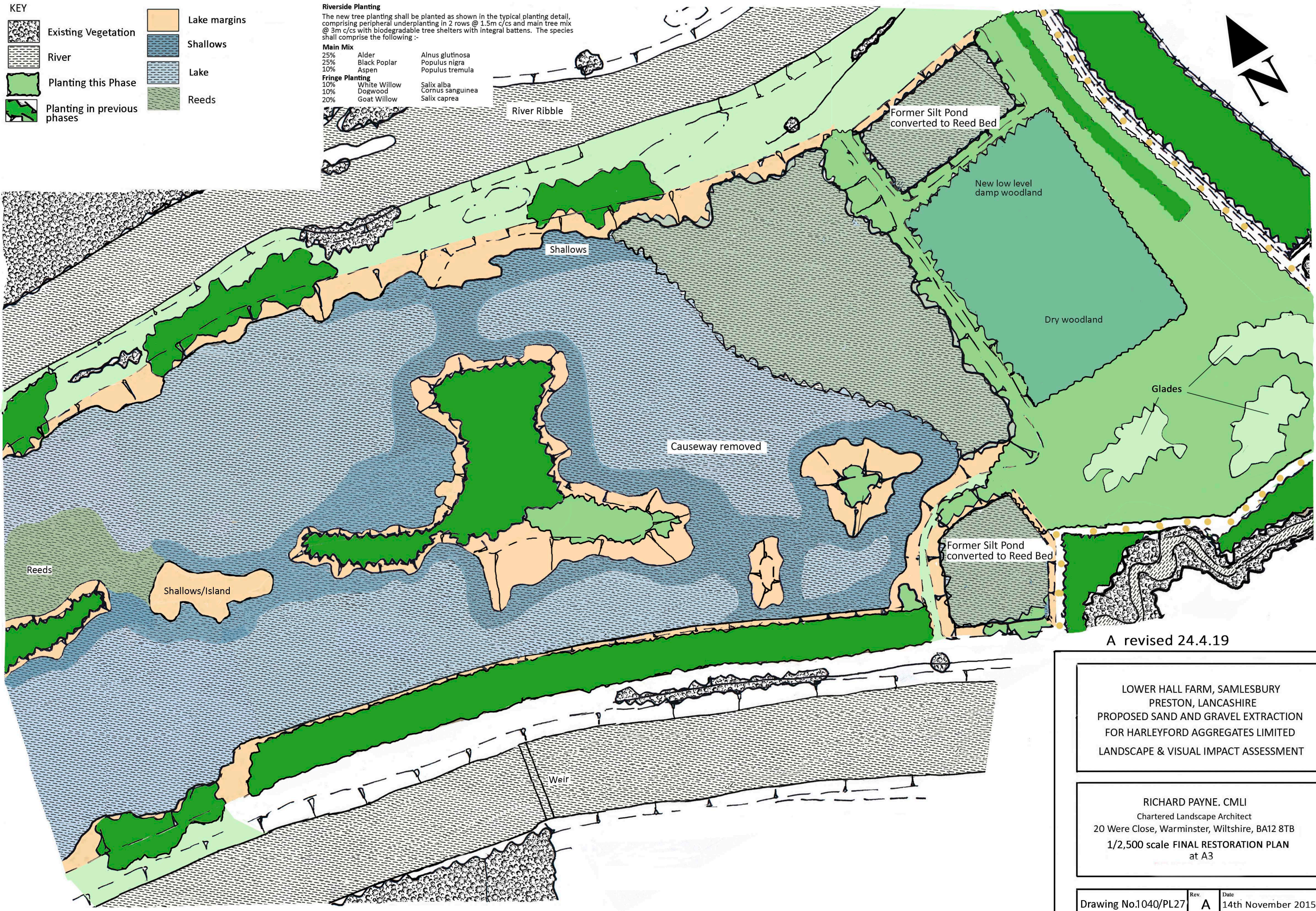
-  Existing Vegetation
-  River
-  Planting this Phase
-  Planting in previous phases
-  Lake margins
-  Shallows
-  Lake
-  Reeds

Riverside Planting
 The new tree planting shall be planted as shown in the typical planting detail, comprising peripheral underplanting in 2 rows @ 1.5m c/cs and main tree mix @ 3m c/cs with biodegradable tree shelters with integral battens. The species shall comprise the following :-

Main Mix
 25% Alder
 25% Black Poplar
 10% Aspen

Fringe Planting
 10% White Willow
 10% Dogwood
 20% Goat Willow

Alnus glutinosa
 Populus nigra
 Populus tremula
 Salix alba
 Cornus sanguinea
 Salix caprea



A revised 24.4.19

LOWER HALL FARM, SAMLESBURY
 PRESTON, LANCASHIRE
 PROPOSED SAND AND GRAVEL EXTRACTION
 FOR HARLEYFORD AGGREGATES LIMITED
 LANDSCAPE & VISUAL IMPACT ASSESSMENT

RICHARD PAYNE. CMLI
 Chartered Landscape Architect
 20 Were Close, Warminster, Wiltshire, BA12 8TB
 1/2,500 scale FINAL RESTORATION PLAN
 at A3

Drawing No.1040/PL27	Rev. A	Date 14th November 2015
----------------------	---------------	----------------------------