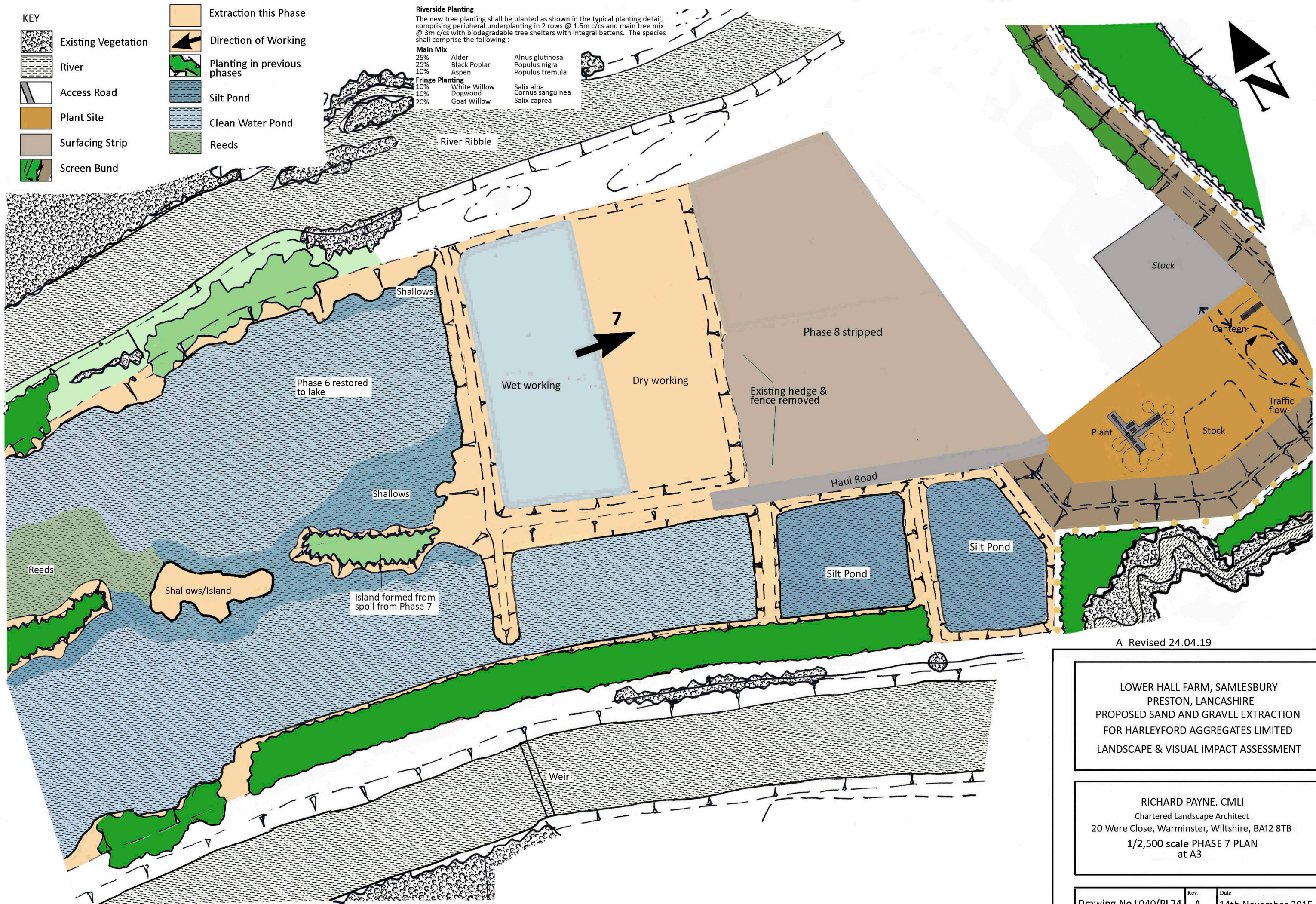


- KEY**
-  Existing Vegetation
 -  River
 -  Access Road
 -  Plant Site
 -  Surfacing Strip
 -  Screen Bund
 -  Extraction this Phase
 -  Direction of Working
 -  Planting in previous phases
 -  Silt Pond
 -  Clean Water Pond
 -  Reeds

Riverside Planting
 The new tree planting shall be planted as shown in the typical planting detail, comprising peripheral underplanting in 2 rows @ 1.5m c/cs and main tree mix @ 3m c/cs with biodegradable tree shelters with integral battens. The species shall comprise the following :-

Main Mix
 25% Alder
 25% Black Poplar
 10% Aspen
 10% *Alnus glutinosa*
 10% *Populus nigra*
 10% *Populus tremula*

Fringe Planting
 10% White Willow
 10% Dogwood
 20% Goat Willow
 10% *Salix alba*
 10% *Cornus sanguinea*
 10% *Salix caprea*



A Revised 24.04.19

LOWER HALL FARM, SAMLESBURY
 PRESTON, LANCASHIRE
 PROPOSED SAND AND GRAVEL EXTRACTION
 FOR HARLEYFORD AGGREGATES LIMITED
 LANDSCAPE & VISUAL IMPACT ASSESSMENT

RICHARD PAYNE. CMLI
 Chartered Landscape Architect
 20 Were Close, Warminster, Wiltshire, BA12 8TB
 1/2,500 scale PHASE 7 PLAN
 at A3

Drawing No.1040/PL24	Rev. A	Date 14th November 2015
----------------------	--------	-------------------------