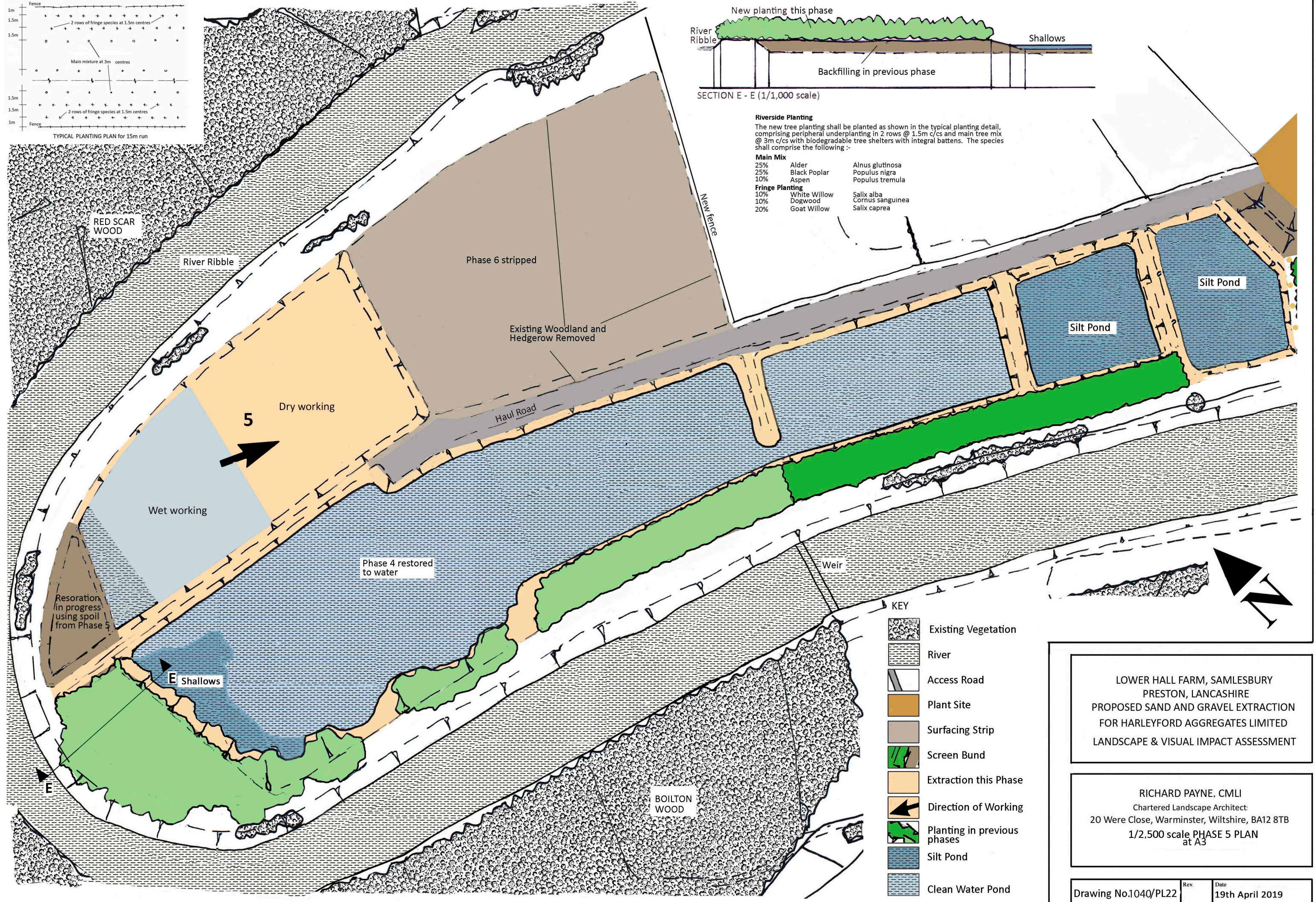


- Riverside Planting**
 The new tree planting shall be planted as shown in the typical planting detail, comprising peripheral underplanting in 2 rows @ 1.5m c/cs and main tree mix @ 3m c/cs with biodegradable tree shelters with integral battens. The species shall comprise the following :-
- | | | |
|------------------------|--------------|------------------|
| Main Mix | Alder | Alnus glutinosa |
| 25% | Black Poplar | Populus nigra |
| 25% | Aspen | Populus tremula |
| 10% | | |
| Fringe Planting | White Willow | Salix alba |
| 10% | Dogwood | Cornus sanguinea |
| 10% | Goat Willow | Salix caprea |
| 20% | | |



- KEY**
- Existing Vegetation
 - River
 - Access Road
 - Plant Site
 - Surfacing Strip
 - Screen Bund
 - Extraction this Phase
 - Direction of Working
 - Planting in previous phases
 - Silt Pond
 - Clean Water Pond

LOWER HALL FARM, SAMLESBURY
 PRESTON, LANCASHIRE
 PROPOSED SAND AND GRAVEL EXTRACTION
 FOR HARLEYFORD AGGREGATES LIMITED
 LANDSCAPE & VISUAL IMPACT ASSESSMENT

RICHARD PAYNE, CMLI
 Chartered Landscape Architect
 20 Were Close, Warminster, Wiltshire, BA12 8TB
 1/2,500 scale PHASE 5 PLAN
 at A3

Drawing No.1040/PL22 Rev. Date
 19th April 2019