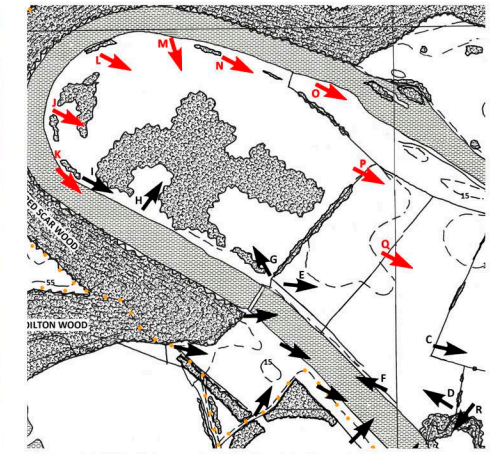




VIEWPOINT J - view of riverside vegetation



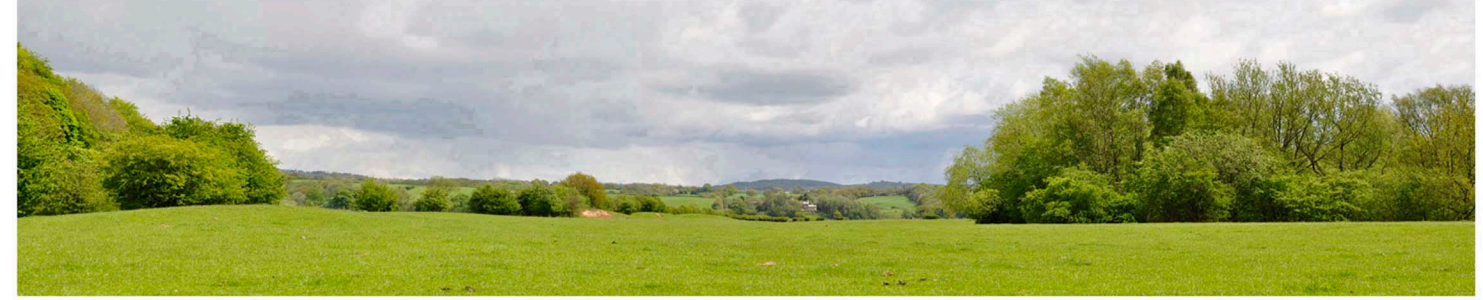
VIEWPOINT K - looking south east along river shoreline



PHOTOGRAPH LOCATION PLAN



VIEWPOINT L - Looking south east from north western end of Site



VIEWPOINT M - Looking south from riverside edge in north of site.



VIEWPOINT N - Looking south east along northern section of site.



VIEWPOINT O - View along River Ribble looking south east.



VIEWPOINT P - Looking south east from field boundary.
Lower Hall Farm



Enlarged view to Bezza House (see Viewpoint Q below)



VIEWPOINT Q - looking east from extraction site



VIEWPOINT R - view of Bezza Brook

VISUAL IMPACT ASSESSMENT - Views of the northern section of the Application Site, in the area of former excavations and alongside the river. These photographs demonstrate the openness of the northern and eastern fields. However views into this section are confined to Lower Hall Farm and Bezza House as shown (see Drawing No.1040/PL33 for reverse views) The screen riverside vegetation along Bezza Brook is also illustrated.

Revised.	Date.	Details.

LOWER HALL FARM, SAMLESBURY
PRESTON, LANCASHIRE
PROPOSED SAND AND GRAVEL EXTRACTION
FOR HARLEYFORD AGGREGATES LIMITED
LANDSCAPE & VISUAL IMPACT ASSESSMENT

RICHARD PAYNE. CMLI
Chartered Landscape Architect
20 Were Close, Warminster, Wiltshire, BA12 8TB
SITE PHOTOGRAPHS SHEET 3
at A3

Drawing No.1040/PL8	Rev.	Date
		19th April 2019