



VIEWPOINT A - looking back to Potters Lane from proposed plant site (see Visibility Photograph 15 for reverse view)



See below



See above

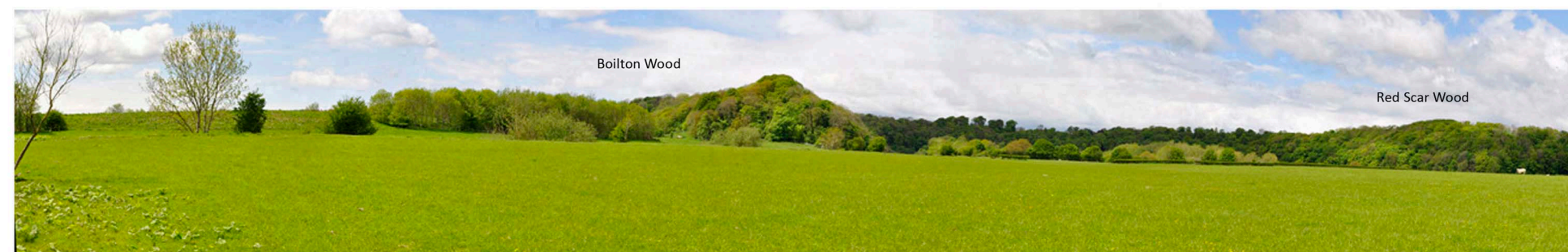
VIEWPOINT B - two photographs giving a panoramic view across proposed plant site.



VIEWPOINT C - looking east from eastern edge of proposed extraction site, over the site of the proposed east screen bund



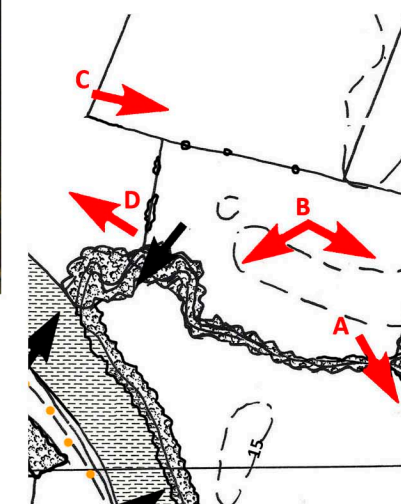
Zoom lens view looking east to Bezza House from Viewpoint C (See Viewpoint 46 on 1040/PL33 for reverse views)



VIEWPOINT D - two photographs giving a panoramic view west across the proposed extraction site.

VISUAL IMPACT ASSESSMENT

These photographs illustrate clearly the characteristic flat low lying plateau of the River Ribble surrounded on the valley sides by steeply sloping woodland to the north and more gentle, sometimes open, slopes to the east. The vegetation on the Application Site is confined to sparse field hedgerows, natural wetland regeneration in the former working area to the north, and riverside trees along the Bezza Brook. The plant site is more undulating than the rest of the site. These locations are overlooked by Lower Hall Farm on the plateau and Bezza House on the eastern slope (see Drawing No. 1040/PL33 for reverse views).



PHOTOGRAPH LOCATION PLAN

Revised.	Date.	Details.

LOWER HALL FARM, SAMLESBURY
PRESTON, LANCASHIRE
PROPOSED SAND AND GRAVEL EXTRACTION
FOR HARLEYFORD AGGREGATES LIMITED
LANDSCAPE & VISUAL IMPACT ASSESSMENT

RICHARD PAYNE, CMLI
Chartered Landscape Architect
20 Were Close, Warminster, Wiltshire, BA12 8TB
SITE PHOTOGRAPHS SHEET 1
at A3
REVISED DEC. 2017

Drawing No.1040/PL6	Rev.	Date
		19th April 2019