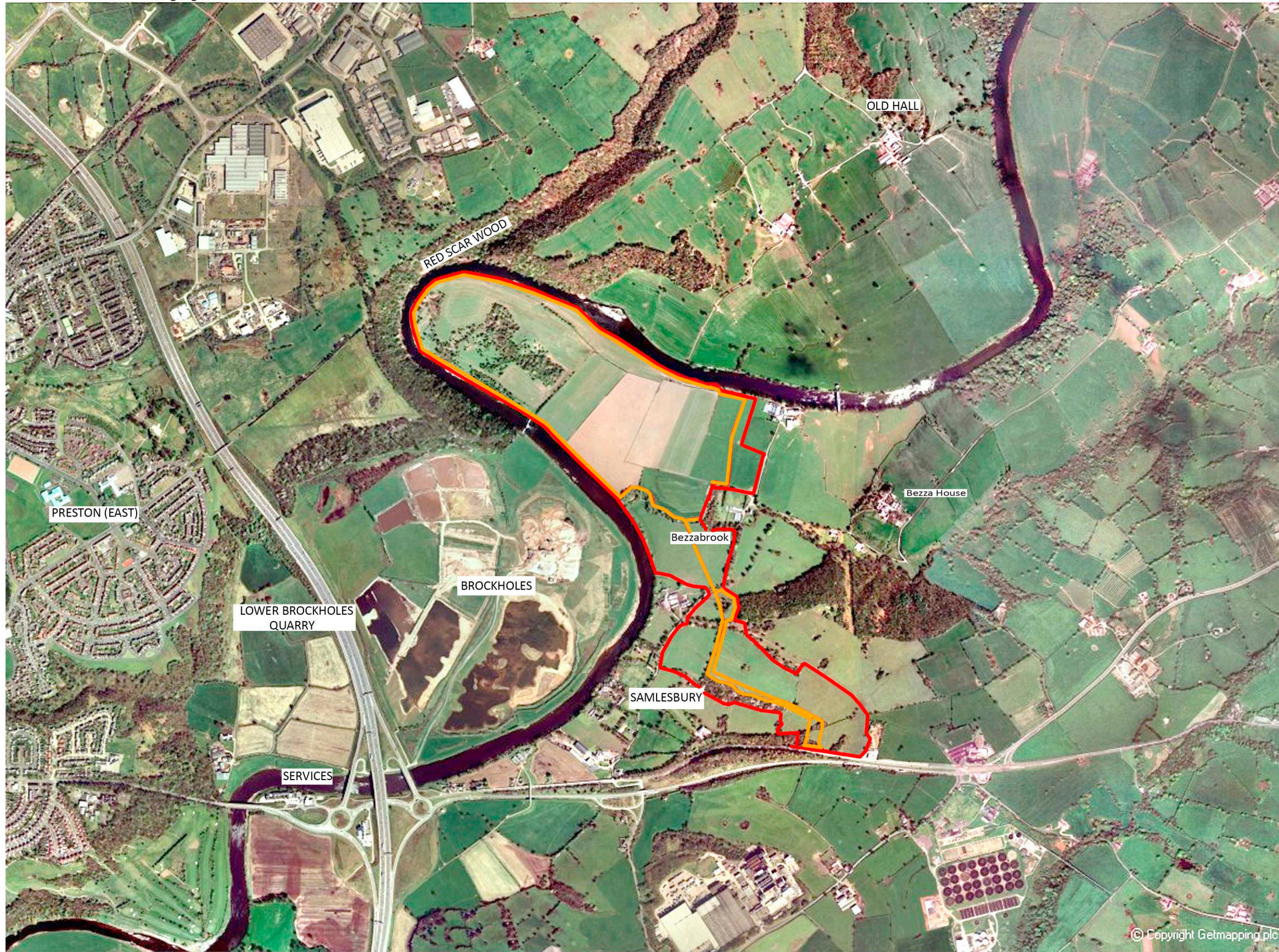


Longridge Industrial Estate

M6



River Ribble

M6  
(Junction 31)

Brewery

Sewage Works

KEY

- Application Site
- Development Site
- Existing Vegetation
- Existing Settlements
- Pasture
- Arable
- Hedges

A59

A677



Revised.	Date.	Details.
A	24.4.19	

LOWER HALL FARM, SAMLESBURY  
 PRESTON, LANCASHIRE  
 PROPOSED SAND AND GRAVEL EXTRACTION  
 FOR HARLEYFORD AGGREGATES LIMITED  
 LANDSCAPE & VISUAL IMPACT ASSESSMENT

RICHARD PAYNE. CMLI  
 Chartered Landscape Architect  
 20 Were Close, Warminster, Wiltshire, BA12 8TB  
 DISTRICT AERIAL PHOTOGRAPH  
 at A3

Drawing No.1040/PL2	Rev. A	Date 14th November 2015
---------------------	--------	-------------------------