

Appendix D
BGS Borehole Record Summary

Source No. on Figure 14	BGS Ref.	Location	Aquifer	Easting	Northing	Distance from Site (km)
10	SD53/25	RED SCAR WOOD	SHERWOOD SANDSTONE GROUP	358600	431320	0.45
11	D53/76	BROCKHOLES QUARRY	SHERWOOD SANDSTONE GROUP	358630	430790	0.84
12	SD53/67	HIGHER BROCKHOLES	UNKNOWN	358500	430800	0.89
13	SD53/16D	COURTAULDS LTD NO. 5	SHERWOOD SANDSTONE GROUP	358080	431820	0.95
14	SD53/16B	COURTAULDS LTD NO. 1	SHERWOOD SANDSTONE GROUP	358040	431990	1.05
15	SD53/16C	COURTAULDS LTD NO. 4	SHERWOOD SANDSTONE GROUP	357680	431920	1.36
16	SD63/34	ELSTON OLD HALL FARM	UNKNOWN	360000	432500	1.39
17	SD53/50	WHITBREAD OBS C	SHERWOOD SANDSTONE GROUP	359020	430110	1.43
18	SD53/48B	WILSONS FARM, WHITBREAD NO. 3	SHERWOOD SANDSTONE GROUP	358670	430060	1.52
19	SD53/48A	WILSONS FARM, WHITBREAD NO. 1	SHERWOOD SANDSTONE GROUP	358410	430030	1.62
20	SD53/16E	COURTAULDS LTD NO. 2	SHERWOOD SANDSTONE GROUP	357380	431890	1.65
21	SD53/63	LOWER BROCKHOLES FARM	SHERWOOD SANDSTONE GROUP	357730	430400	1.70
22	SD52/53	WHITBREAD BREWERY 3C	SHERWOOD SANDSTONE GROUP	359340	429870	1.71
23	SD53/73	LONGRIDGE ROAD	SHERWOOD SANDSTONE GROUP	357740	432710	1.71
24	SD52/36	WHITBREAD N. BREWERY	SHERWOOD SANDSTONE GROUP	359380	429850	1.74
25	SD52/37D	SAMLESBURY BREWERY	SHERWOOD SANDSTONE GROUP	358430	429880	1.76
26	SD52/58	WHITBREAD BREWERY NO 6	SHERWOOD SANDSTONE GROUP	358430	429880	1.76
27	SD52/59A	WHITBREAD BREWERY A2	SUPERFICIAL DEPOSITS	359140	429790	1.76
28	SD52/59C	WHITBREAD BREWERY C2	SUPERFICIAL DEPOSITS	359260	429800	1.76
29	SD52/59G	WHITBREAD BREWERY E2	UNKNOWN	359400	429800	1.79
30	SD52/59L	WHITBREAD BREWERY G2	UNKNOWN	359510	429800	1.82
31	SD53/16A	COURTAULDS LTD NO. 3	SHERWOOD SANDSTONE GROUP	357260	432120	1.82
32	SD52/37B	GREGSONS FARM	SHERWOOD SANDSTONE GROUP	358390	429810	1.83
33	SD52/56	WHITBREAD BREWERY NO 4	SHERWOOD SANDSTONE GROUP	358390	429810	1.83
34	SD52/59P	WHITBREAD BREWERY J2	SHERWOOD SANDSTONE GROUP	359620	429780	1.87
35	SD52/59D	WHITBREAD BREWERY C4	UNKNOWN	359250	429680	1.88
36	SD52/59B	WHITBREAD BREWERY A4	SHERWOOD SANDSTONE GROUP	359140	429640	1.91
37	SD52/59H	WHITBREAD BREWERY	SHERWOOD SANDSTONE GROUP	359380	429670	1.91
38	SD53/26	COURTAULDS, 'A'	SHERWOOD SANDSTONE GROUP	357560	432930	1.99
39	SD52/37C	SAMLESBURY BREWERY	SHERWOOD SANDSTONE GROUP	358260	429680	2.00
40	SD52/57	WHITBREAD BREWERY NO 5	SHERWOOD SANDSTONE GROUP	358260	429680	2.00
41	SD53/49	WHITBREAD OBS B	SHERWOOD SANDSTONE GROUP	357580	430080	2.03

Appendix E
Restoration Plan

LOWER HALL FARM, SAMLESBURY
 PRESTON, LANCASHIRE
 PROPOSED SAND AND GRAVEL EXTRACTION
 FOR HARLEYFORD AGGREGATES LIMITED
 LANDSCAPE & VISUAL IMPACT ASSESSMENT

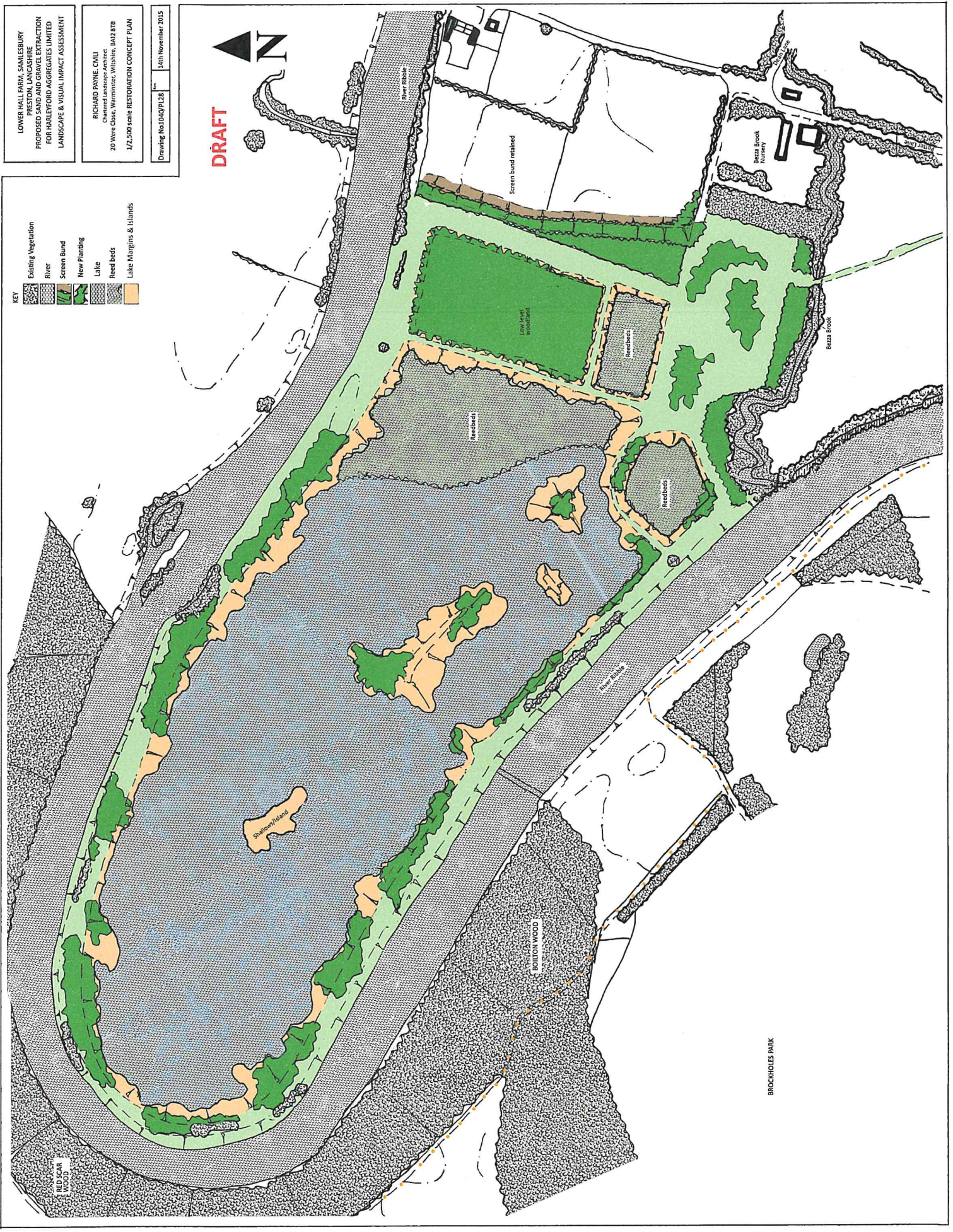
RICHARD PAYNE, CIVIL
 Chartered Landscape Architect
 20 Were Close, Warrimuir, Wiltshire, BA12 8TD
 1/2,500 scale RESTORATION CONCEPT PLAN

Drawing No: 1049/PL28
 14th November 2015

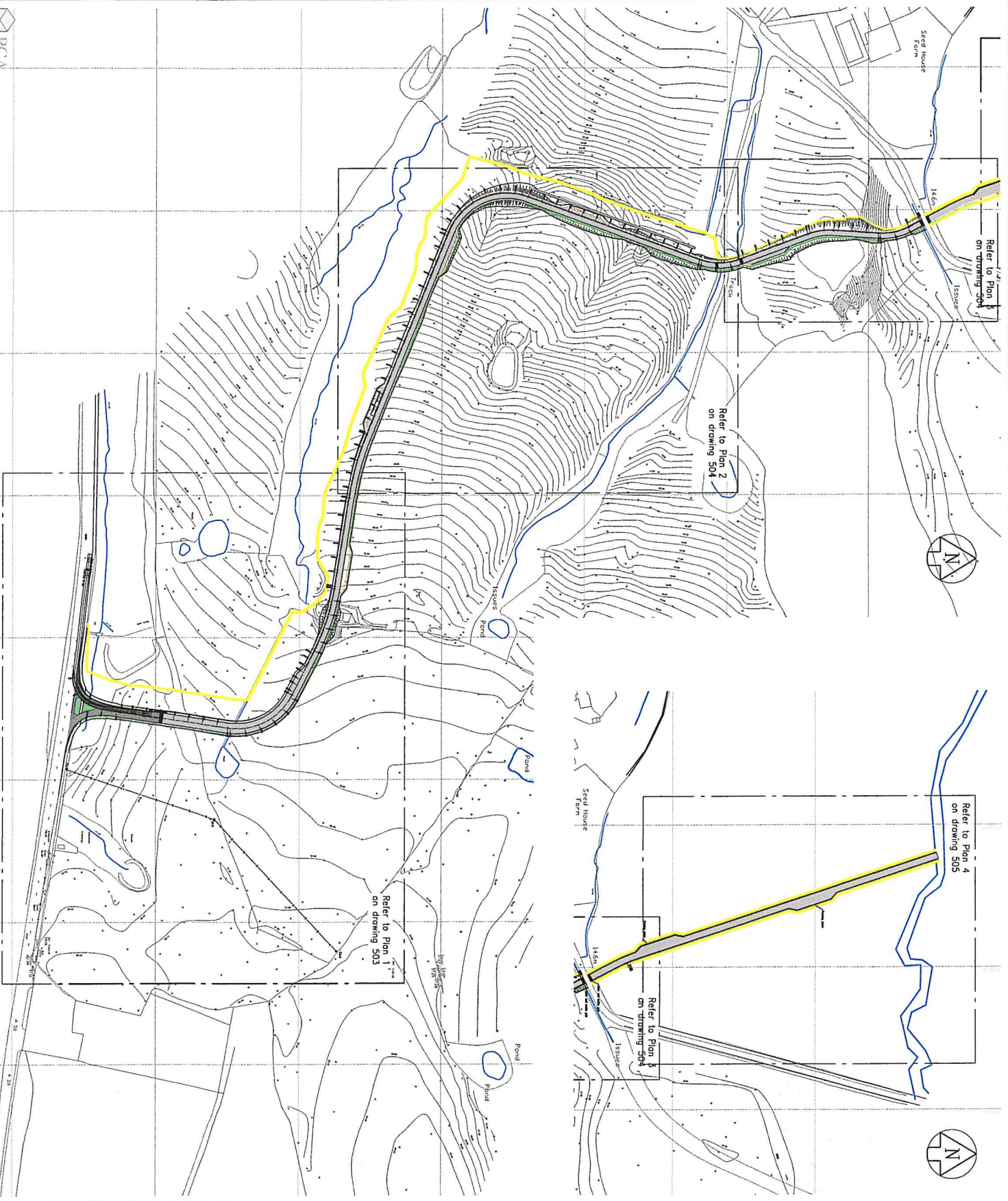
DRAFT



- KEY**
- Existing Vegetation
 - River
 - Screen Bund
 - New Planting
 - Lake
 - Reed beds
 - Lake Margins & Islands



Appendix F
Route of New Access Road



PROVISIONAL

GENERAL NOTES

- This drawing is to be read in conjunction with all other relevant Architect's, Engineer & Specialist drawings (as appropriate).
- Do NOT SCALE FROM THIS DRAWING. Use figured dimensions only.

KXX	Limit of works boundary
---	Stock proof fencing

PO	17/01/14	Main junction cleared	JADC	JADC
PT	27/06/13	Final perimeter, Works boundary and Fences	TR	JADC
PT	02/08/13	Final Works	TR	JADC
REV	DATE	REVISIONS	ISS	ISSUED

PAUL CARPENTER ASSOCIATES
 Consulting Civil and Structural Engineers
 UNITED SERVICES OFFICE PL. BK. ENTERA EX 51X
 TEL: 0192 343 497 FAX: 0192 343 498
 Email: paul@paulcarpenter.co.uk
 Web: www.paulcarpenter.co.uk
 KINGSBURDE: 0193 83897 LONDON: 0208 940 7910

SAMLESBURY
PRESTON

OVERALL PLAN

SCALE 1:1250 @ A1

DATE: 13/08/13

9567_502

Drawn by: TR

Checked by: JAC

See: AUG 13

Issue: AUG 13

© Copyright