

Scale 1:25,000 (at A3)

KEY

Site Boundary

2km Survey Radius (from SD 58991 31543)

Reproduction of base map with the permission of The Controller of Her Majesty's Stationary Office © Crown copyright. Licence No. AL 100050002.



Ref: P:\Samesbury FRA (1998)\2016 Update\Figures\Figure 1 Site Location Date: 02/06/2016

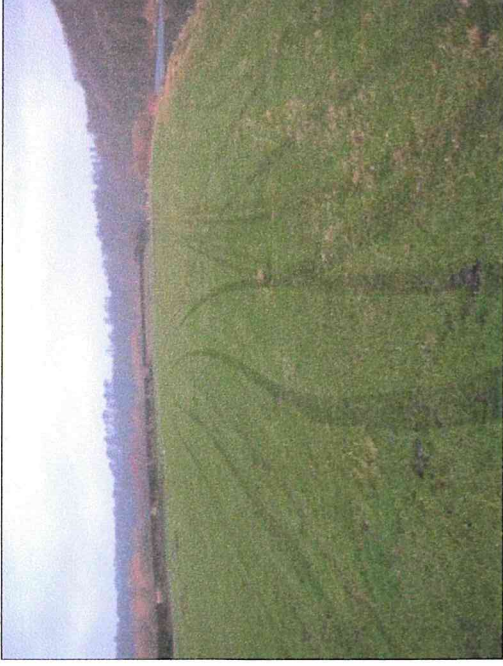
Samesbury Estate

Figure 1

Site Location



Northwest facing view across the site



River Ribble bordering northern part of the site



Drilling of PZ1 with sandstone outcrop in background



Locations of PZ2 and PZ2a

Ref: P:\Samblesbury FRA (1998)\2016
Update\Figures\Figure 2 Site Photographs
Date: 24/03/2016

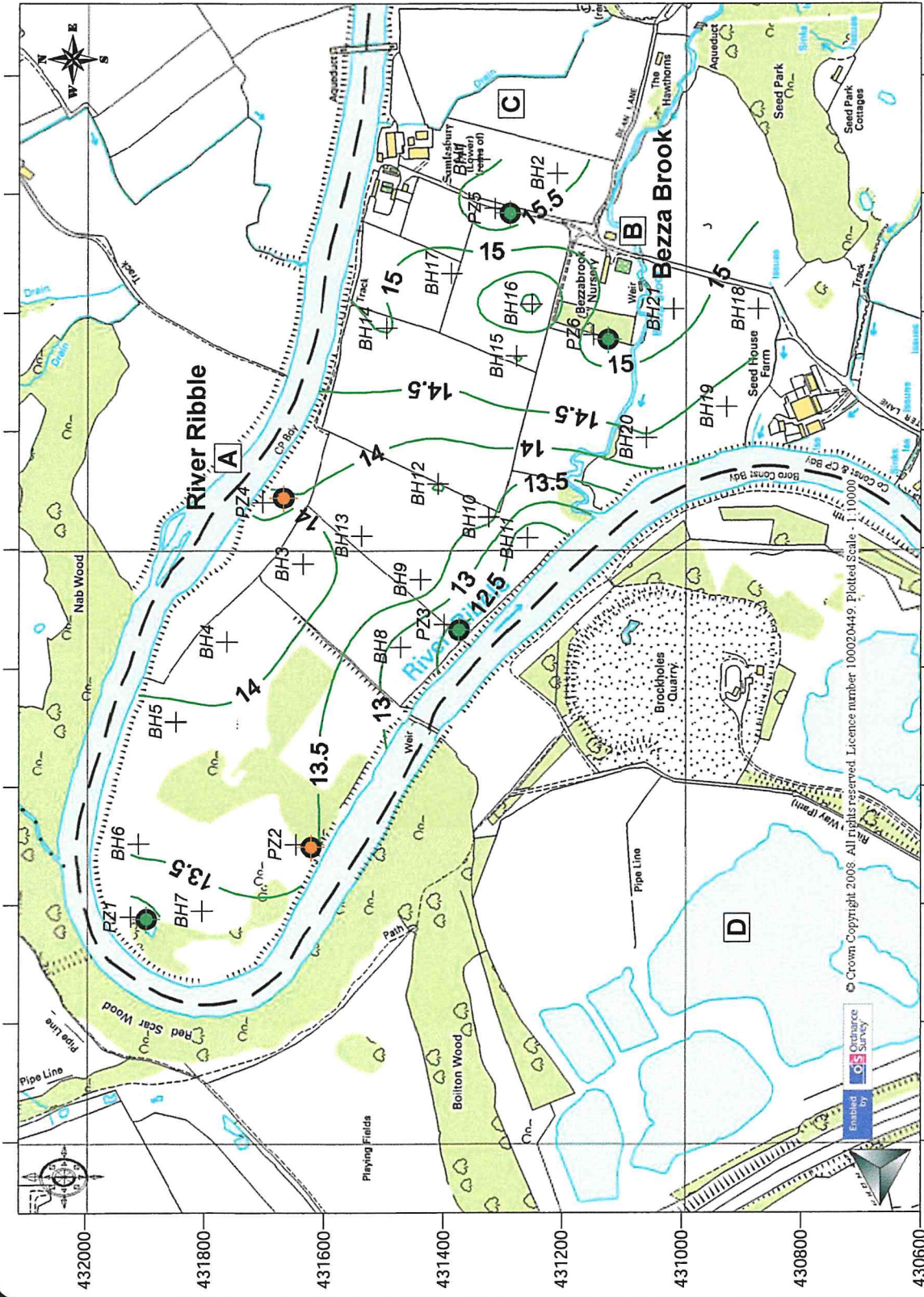
Figure 2

Samblesbury Estate

Site Photographs

KEY

- Contour line (mAOD)
- + Site Investigation Borehole
- Shallow Piezometer
- Shallow & Deep Piezometers
- A Surface Water Features (Table 2)

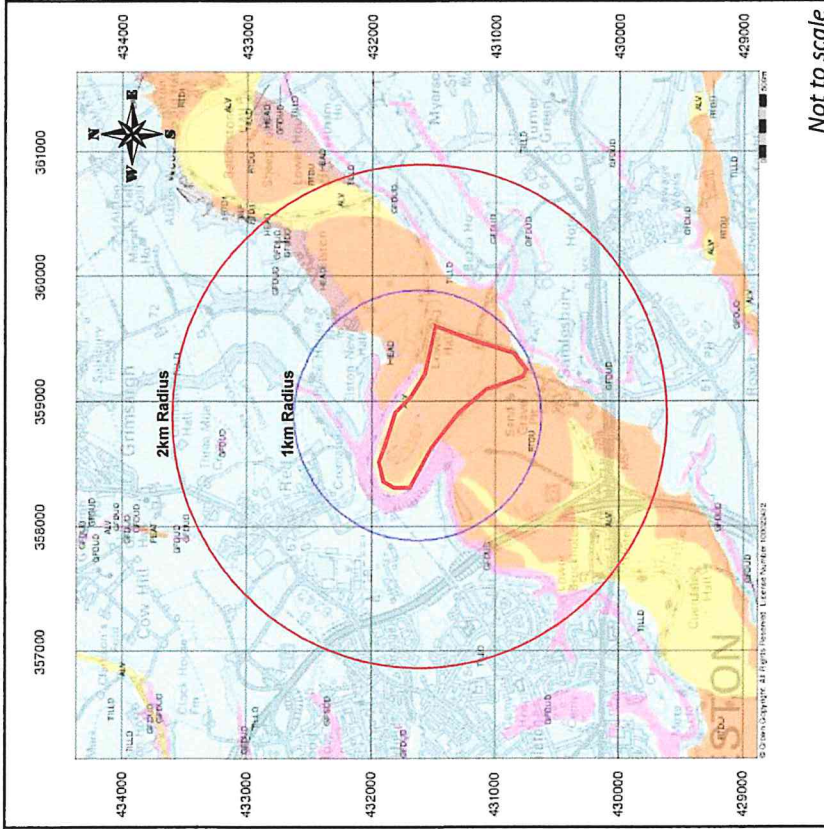


Reproduction of base map with the permission of The Controller of Her Majesty's Stationary Office © Crown copyright. Licence No AL 100050002. Scale 1:10,000 (at A4)

<p>Ref: P:\Sablesbury FRA (1998)\2016 Update\Figures\Figure 3 Site Topography Date: 02/06/2016</p>	<p>Sablesbury Estate</p>
<p>Figure 3</p>	<p>Site Topography</p>

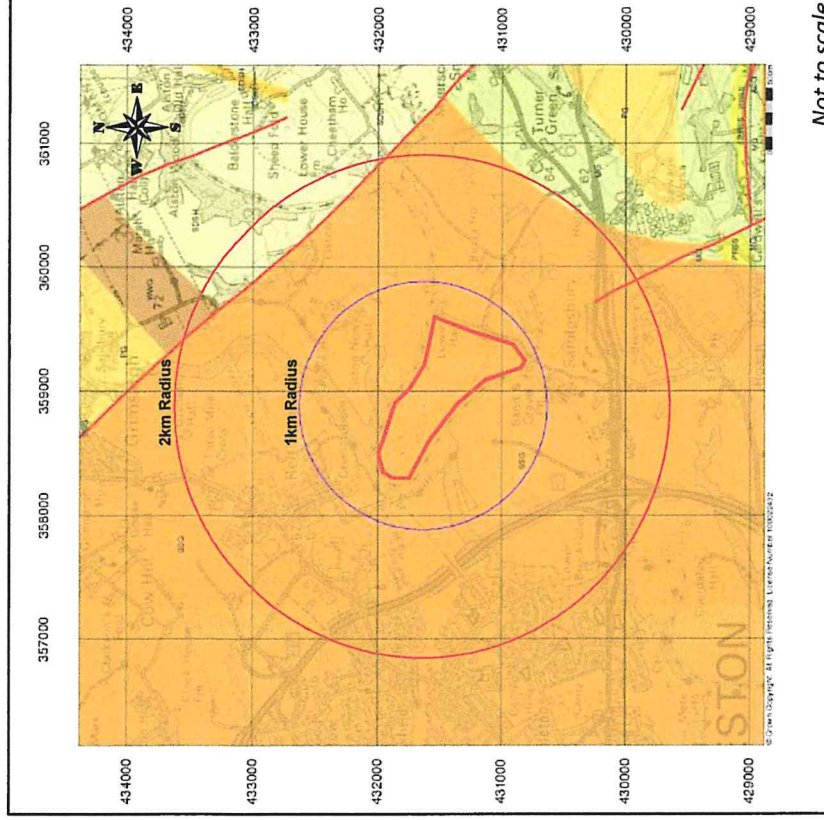


Superficial Geology



Not to scale

Bedrock Geology



Not to scale

KEY

- Site Boundary
- Fault

Superficial Geology

- Glacial Till
- River Terrace Deposits
- Alluvium
- Glaciofluvial Deposits
- Head

Bedrock Geology

- Parsonage Sandstone
- Sabden Shales
- Sherwood Sandstone Group
- Pendle Grit Member
- Warley Wise Grit
- Millstone Grit Group

[C05/083-CSL] British Geological Survey. © NERC. All rights reserved.
 Reproduction of base map with the permission of The Controller of Her Majesty's Stationary Office © Crown copyright. Licence No AL 100050002.

Ref: P:\Samblesbury FRA (1998)\2016
 Update\Figures\Figure 4 Geo Setting
 Date: 02/06/2016



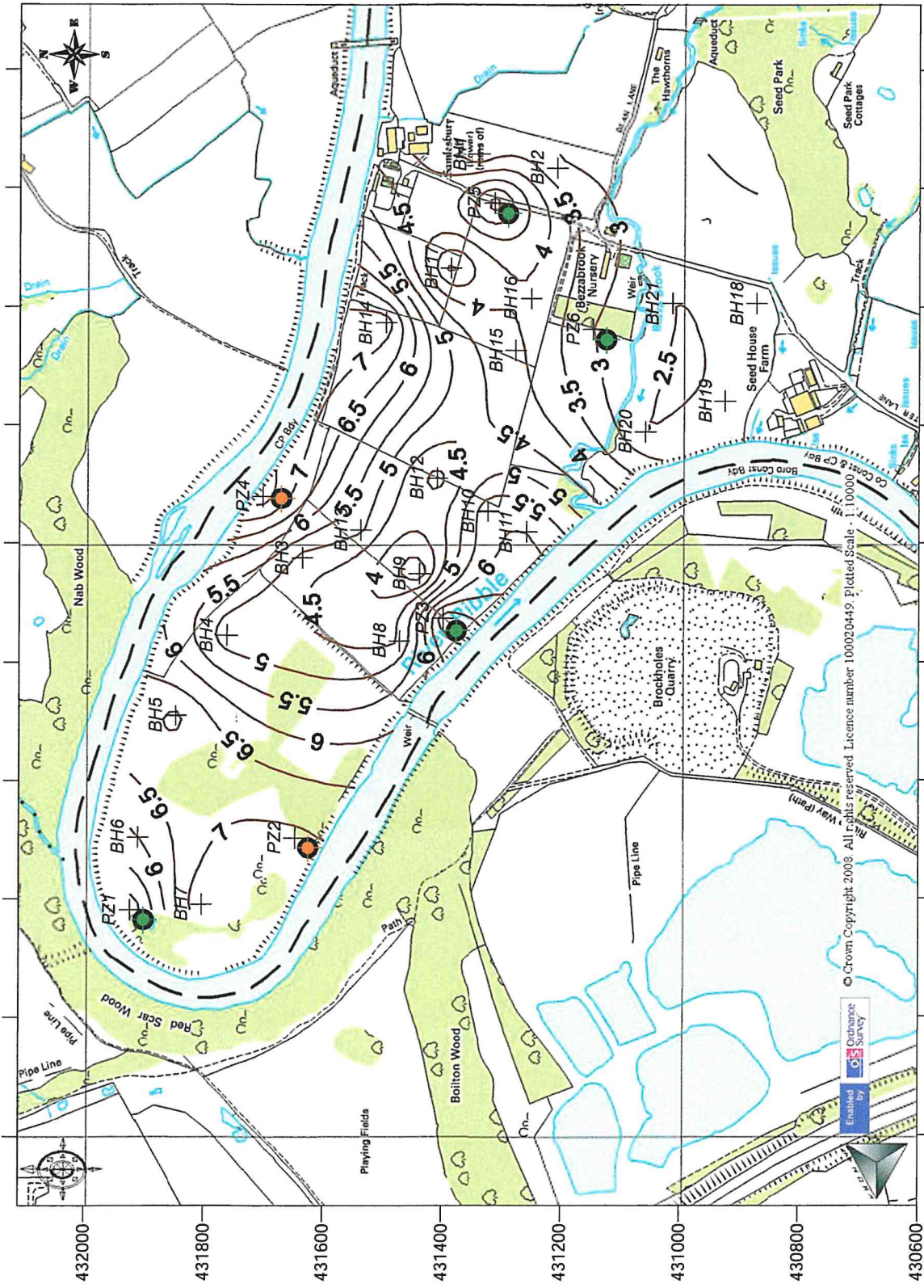
Samblesbury Estate

Geological Setting

Figure 4

KEY

- Contour line (mAOD)
- + Site Investigation Borehole
- Shallow Piezometer
- Shallow & Deep Piezometers



Reproduction of base map with the permission of The Controller of Her Majesty's Stationary Office © Crown copyright. Licence No AL 100050002. Scale 1:10,000 (at A4)

Ref: P:\Sablesbury FRA (1998)\2016 Update\Figures\Figure 5 Mineral Thickness Date: 06/04/2016

Sablesbury Estate

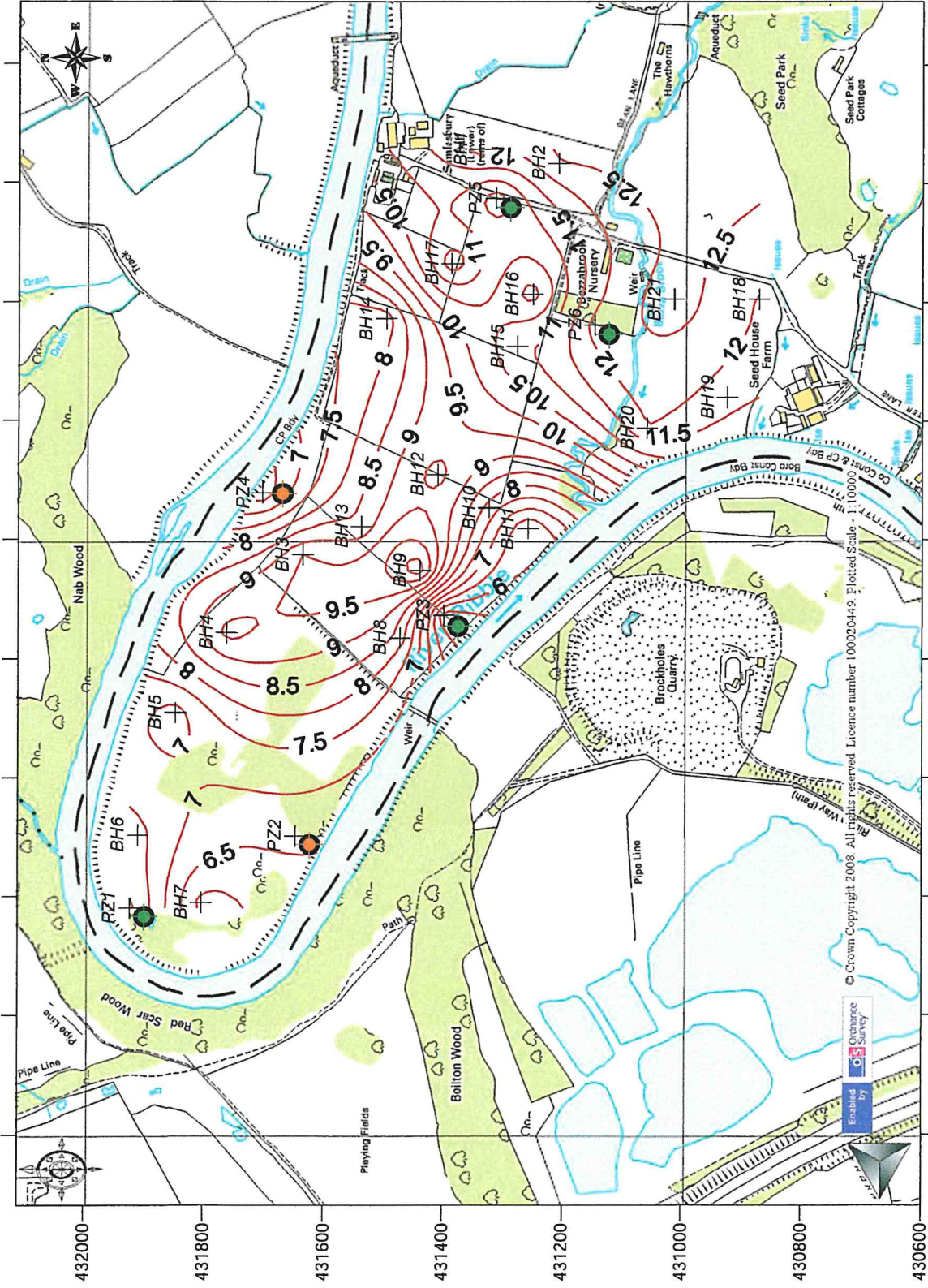
Thickness of Mineral Deposit



Figure 5

KEY

- Contour line (mAOD)
- + Site Investigation Borehole
- Shallow Piezometer
- Shallow & Deep Piezometers



Reproduction of base map with the permission of The Controller of Her Majesty's Stationary Office © Crown copyright. Licence No AL 100050002. Scale 1: 10,000 (at A4)

Ref: P:\Sablesbury FRA (1998)\2016 Update\Figures\Figure 6 Base Elevation Date: 02/06/2016

Sablesbury Estate

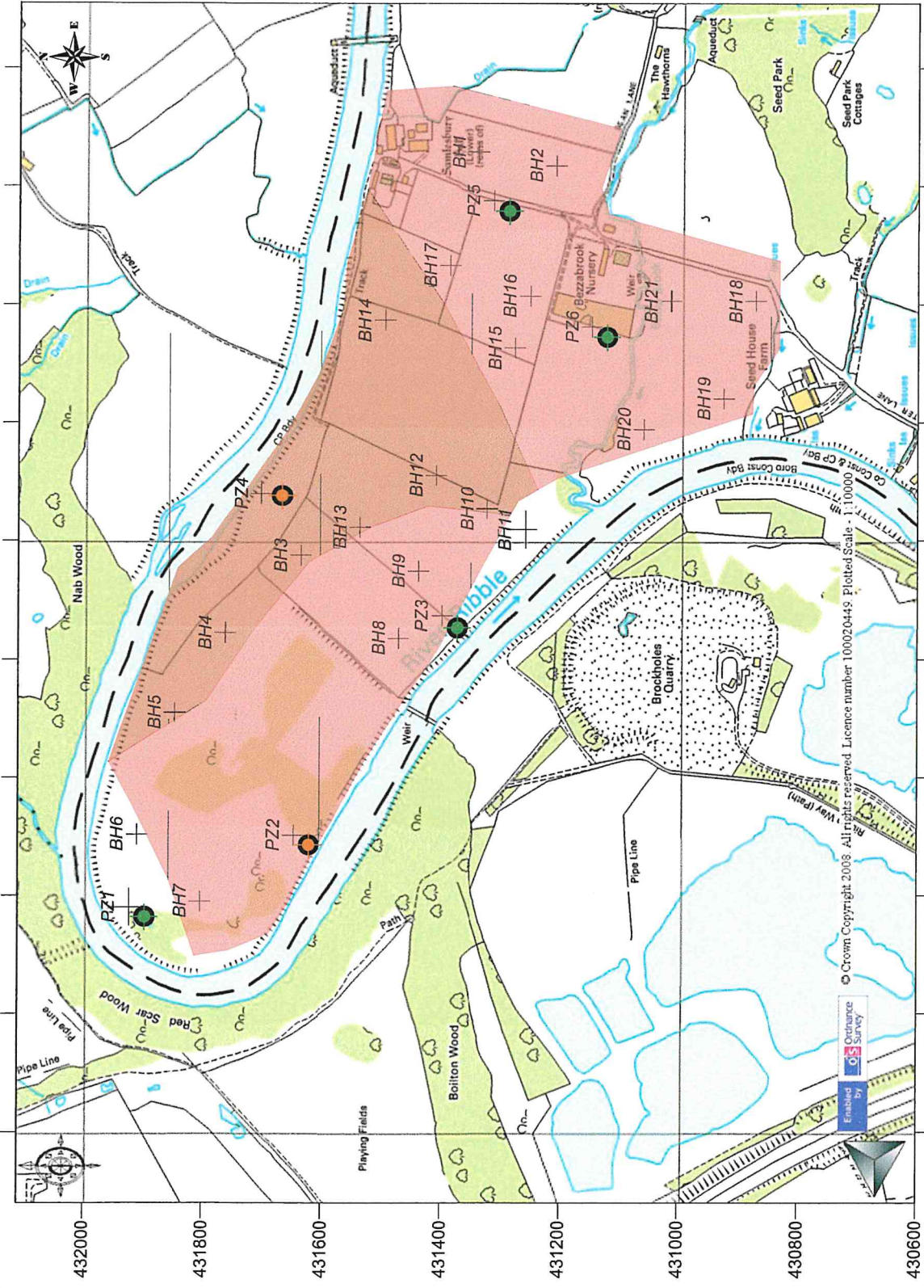
Elevation of Base of Deposit

Figure 6



KEY

- Site Investigation Borehole
- Shallow Piezometer
- Shallow & Deep Piezometers
- Sand
- Glacial Till



Reproduction of base map with the permission of The Controller of Her Majesty's Stationary Office © Crown copyright. Licence No. AL 100050002. Scale 1: 10,000 (at A4)

Ref: P:\Samlesbury FRA (1998)\2016 Update\Figures\Figure 7 Till Deposit
Date: 02/06/2016

Samlesbury Estate

Extent of Glacial Till Deposits



Figure 7