



PROPOSED BOURBLES QUARRY
Land off Bourbles Lane, Nr Preesall Lancashire:
Proposed Built Structures

1. Introduction

1.1 The proposed structures to be constructed during the initial phase of the works will include the following:

- Sand & Gravel wash plant
- Weighbridge & office
- Offices and welfare facilities
- Bunded Fuel Tanks
- Wheel wash

1.2 All of these proposed structures were assessed as part of the visual and landscape assessment of the proposed quarry development.

1.3 A plant layout drawing is given that shows the approximate location and scale of all of the plant and structures proposed.

1.4 The detailed specifications of the layout and dimensions of all static plant, offices, wheel wash (if required), weighbridge and other fixed structures will be provided to the Mineral Planning authority prior to the commencement of site operations.

2. Proposed Wash Plant

2.1 An example wash plant design for the Bourbles Quarry site is based on similar operating sites is given in the attached plans.

2.2 The plant will include a feed hopper, fixed screening deck with high pressure rinsing system to wash the gravels, sand classifiers (hydrocyclones) with stocking conveyors and associated pumps and screens. A series of cabins will be required to house the electrical equipment and the welfare facilities for the operatives.

2.3 The plant will be founded on a concrete base and access will be gained via the internal haul road from the main entrance roads and weighbridge.

3. Weighbridge

- 3.1 The proposed weighbridge will be some 15m long to enable all road going HGV's to use the quarry. This will be constructed on a concrete base and will have a weighbridge office located adjacent to the weighbridge, similar to the setup shown on the attached plans. All vehicles will enter the site via the weighbridge and office.

4. Site Office & Welfare Buildings

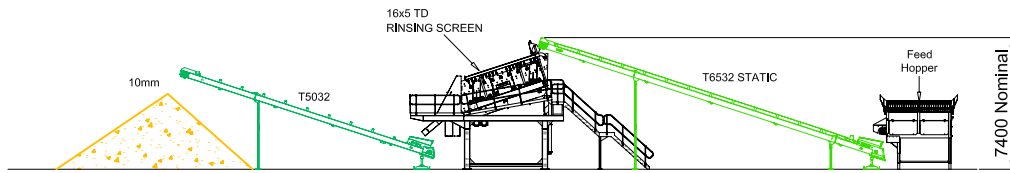
- 4.1 It is proposed that offices will comprise a mobile "portakabin" type building that will have facilities for the manager, sales personnel and other administrative staff. Welfare facilities will also be required such a toilet and washroom, kitchen, mess room, together with an adjacent car parking and HGV parking area. There are no permanent built structures proposed as office accommodation on the site. The offices and facilities buildings will be similar dimensions to those shown in the attached plans.

5. Wheel Wash

- 5.1 A wheel wash be installed if required, to ensure all vehicles leave the site and do spread any mud on the highway. This will comprise a high pressure wash some 7m long x 3m wide. This will have a water tank and a cattle grid type base that can be removed for removing any build-up of silt in the base of the wash bed.

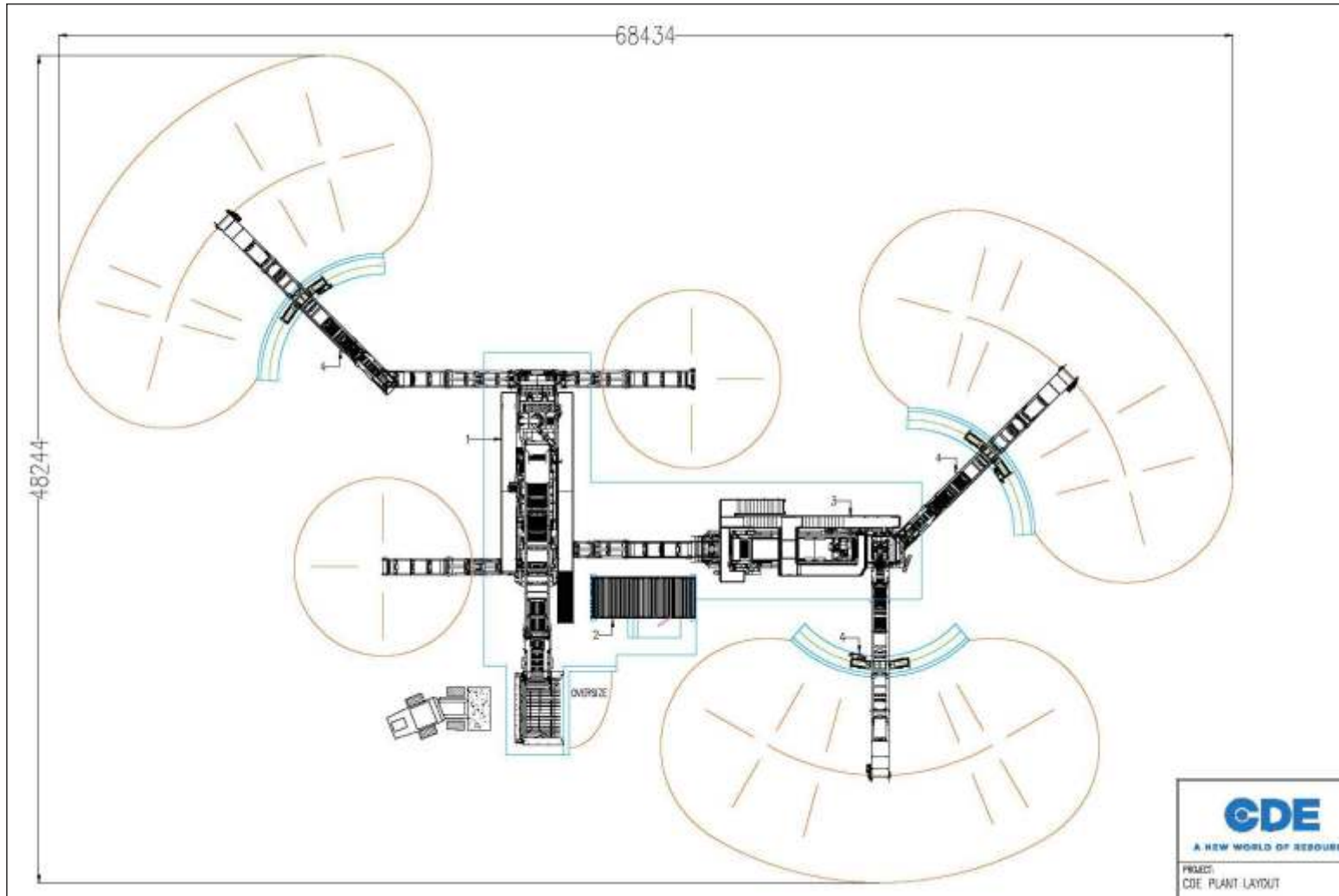


S J Rees B.Sc., M.Sc., C.Geol, FGS, MIQ
for Greenfield Environmental



SIDE VIEW PLANT

Item	Qty	Name, Description, Material, etc.	Reference
1	1	M2500 E4X c/w M14 HOPPER	CDE SUPPLY
2	1	4m CONTROL CABIN	CDE SUPPLY
3	1	AGGMAX B3	CDE SUPPLY
4	3	R1565 MOBILE STOCKPILE CONVEYOR	CDE SUPPLY

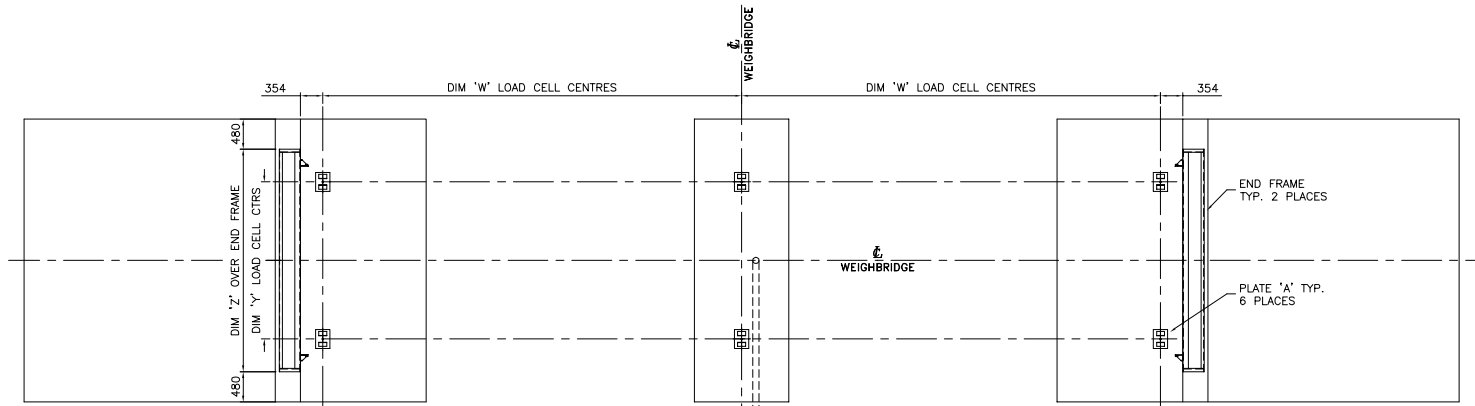


Typical Processing Plant
Proposed Bourbles Quarry

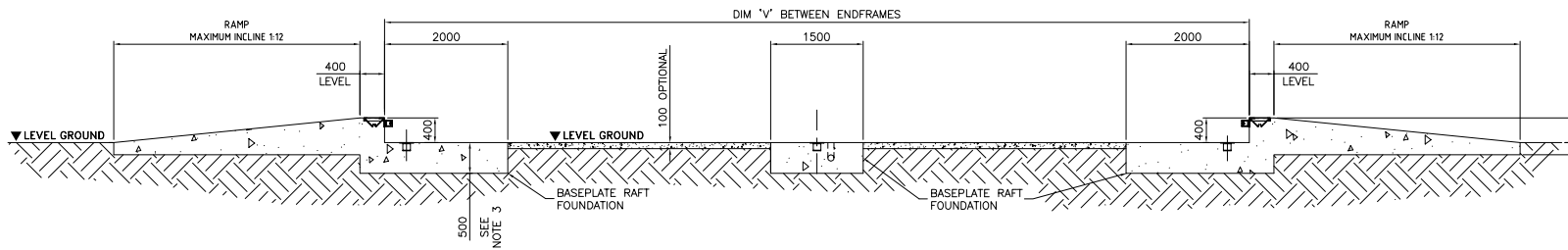


PLEASE NOTE THAT THIS IS A "SALES" DRAWING. AND SHOULD BE USED FOR DISCUSSION / QUOTATION PURPOSES ONLY

WEIGHBRIDGE TYPE	DIM 'Z'	DIM 'Y'	DIM 'W'	DIM 'V'
15m x 3m	3040	2200	7166	15040
15m x 3.2m	3240	2400	7166	15040
15m x 3.5m	3540	2700	7166	15040
18m x 3m	3040	2200	8666	18040
18m x 3.2m	3240	2400	8666	18040
18m x 3.5m	3540	2700	8666	18040



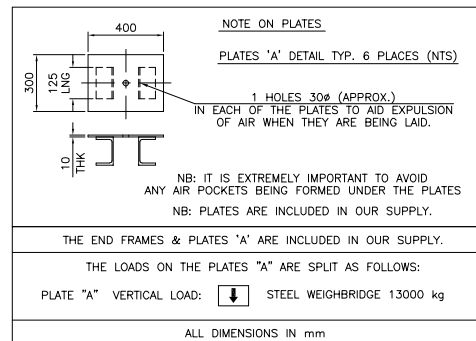
FOUNDATION LAYOUT FOR SURFACE WEIGHBRIDGE



TYPICAL SECTION THROUGH SURFACE WEIGHBRIDGE

NOTES

1. Baseplates to be fixed level to +/- 5mm tolerance, and bedded on reinforced concrete pad foundations to Structural Engineers design to suit site conditions. Foundations to be approx. 500mm thick, 35 Newton concrete designed to receive a vertical load on the baseplates 13,000kg for steel Weighbridges.
2. Ducts are required from the Weighbridge office to the weighbridge, size minimum 100mmø.
3. Foundation details can be amended to suit ground conditions and/or Clients requirements. See separate manufacturers drawing for details.



Typical Weighbridge
Proposed Bourbles Quarry

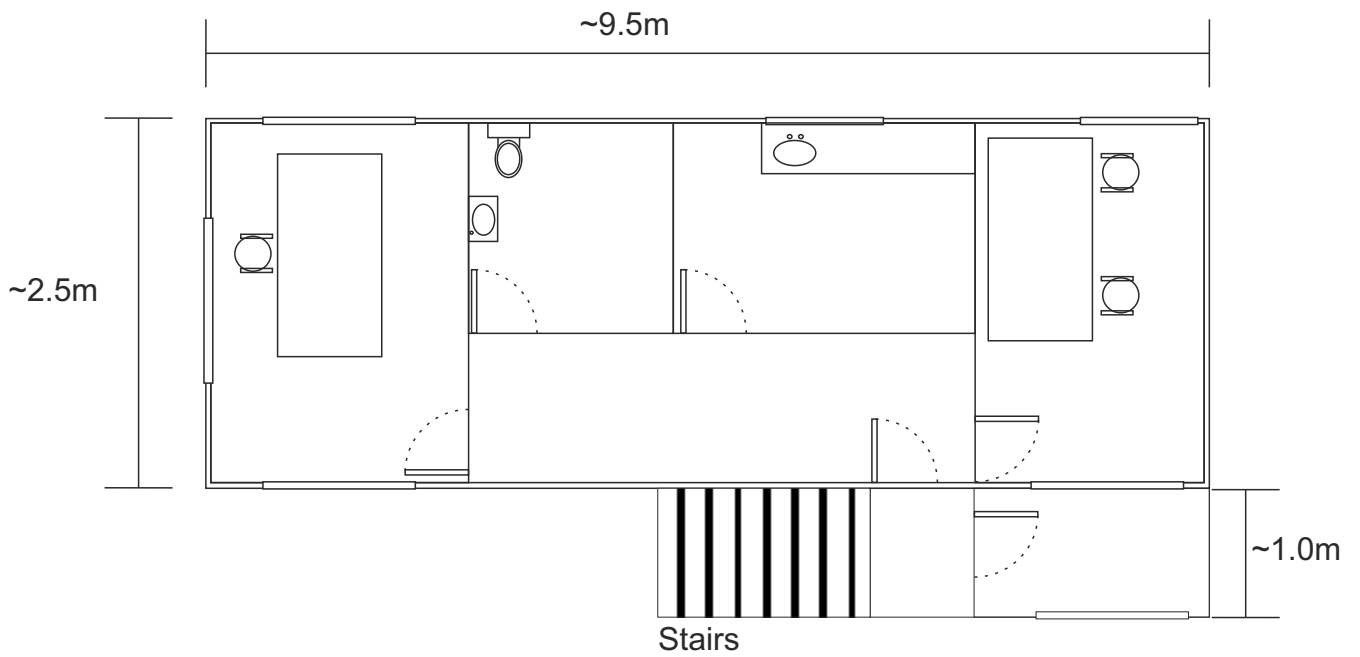


REV.	MODIFICATIONS	DRWN	CHGD.	APPD.	DATE
A	FIRST ISSUE	SCW	MS	MS	15.04.11

Typical Weighbridge Office and Dimensions

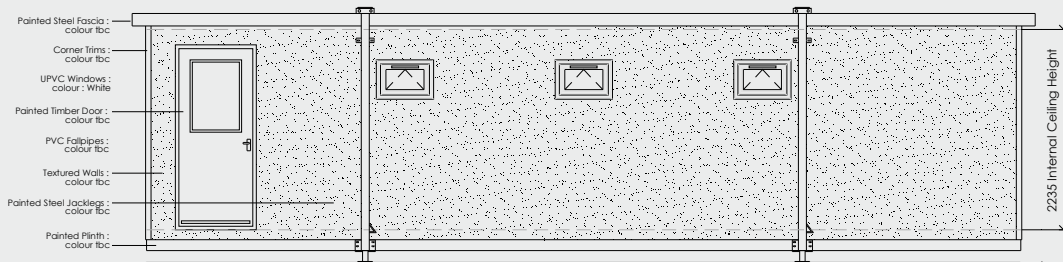
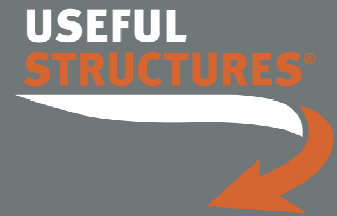


Plan View (not for construction purposes)

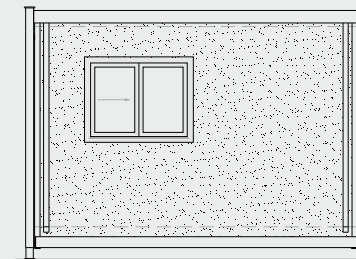


Provisional Elevations

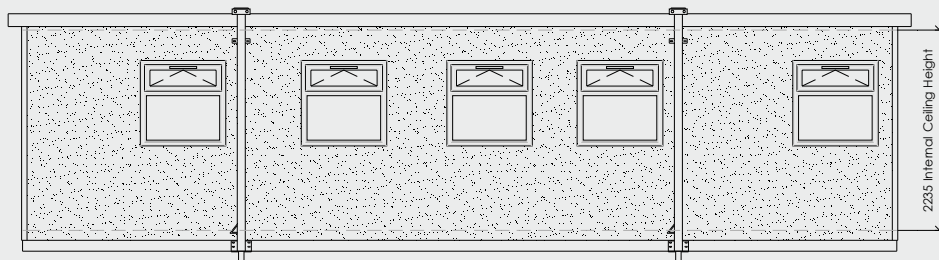
9.7m x 3.6m Office and Amenities



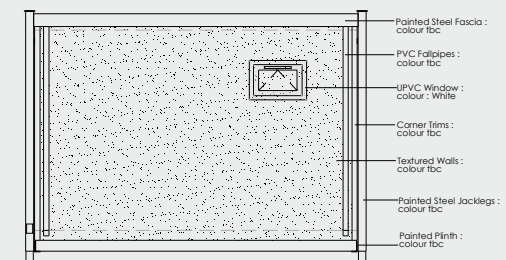
Elevation A



Elevation B

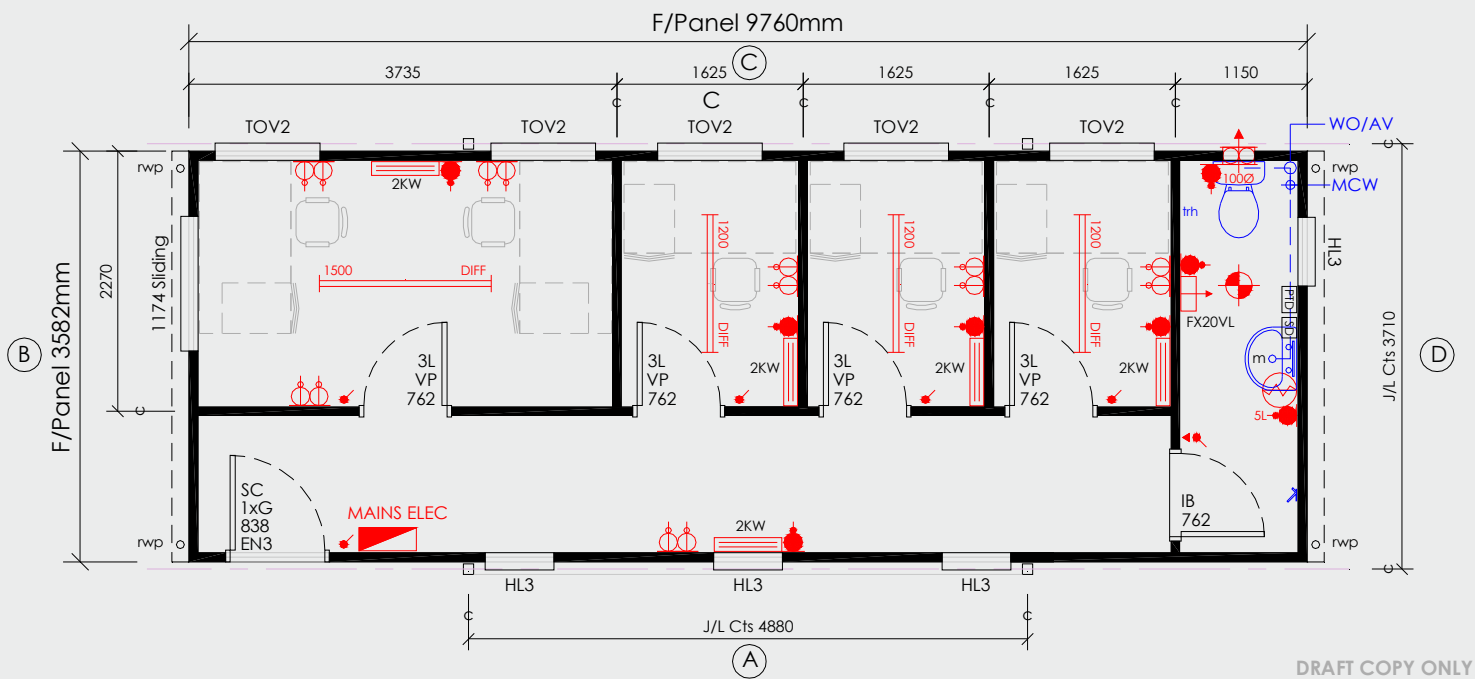
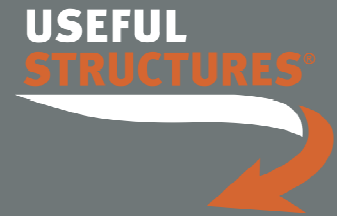


Elevation C



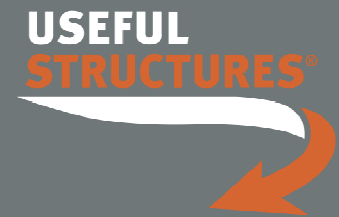
Elevation D

Provisional Plans 9.7m x 3.6m Office and Amenities



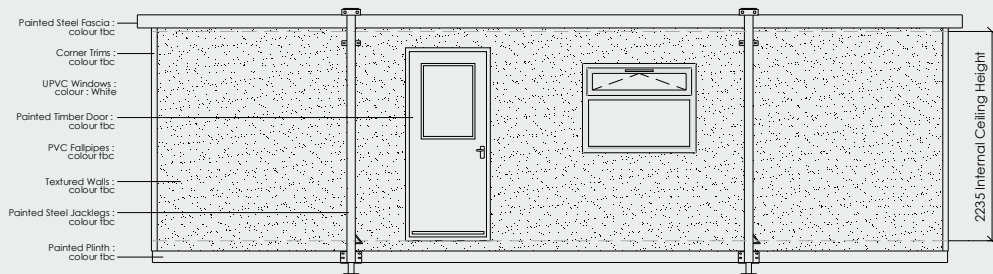
Itemised Specification

8.5m x 3.6m Canteen Unit

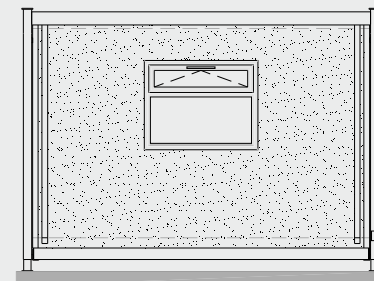


Timber Framed Module	1	Timber Framed Open Plan Building Envelope
	1	Steel Floor Panel
	1	Set of Jack Legs
External Finish	1	Uniroof Blanket
	1	Textured External Wall Finish
	1	UPVC Rainwater Down Pipe
Internal Finishes	1	White Vinyl Faced Plasterboard Ceiling c/w "H" Sections
	1	Cream Vinyl Faced Plasterboard Walls c/w "H" Sections
Internal Wall Finishes	5	Metres Vinyl Face Plasterboard Lined Partitioning c/w "H" Sections
	2.5	Ceramic Tile Splashback
Floor Coverings	23.5	Sq.m of 2mm Polyflor XL Vinyl Floor Covering
	7	Sq.m of 2mm Polyflor Polysafe Standard Non-Slip Vinyl Floor Covering
External Doors	1	Single Plywood Flush Gloss Painted Solid Core Door & Frame
	1	Half Glazed Panel
	1	Door Closer
Internal Doors	2	Single Pre-Finished Hollow Core Door Set

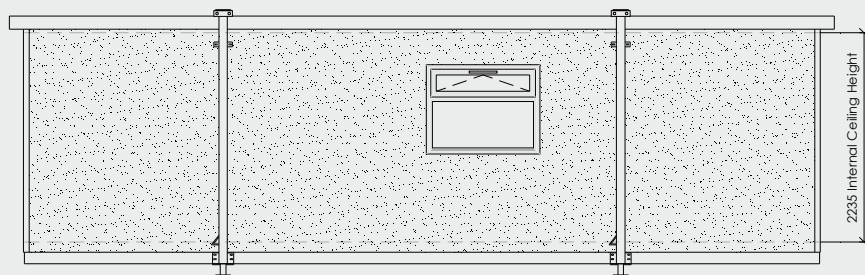
Provisional Elevations 8.5m x 3.6m Canteen Unit



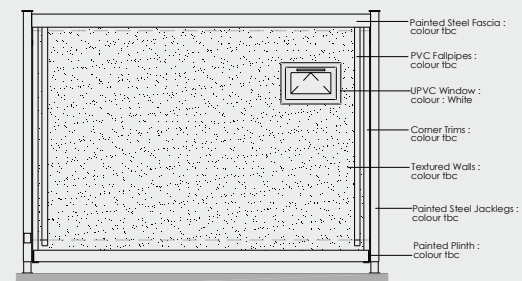
Elevation A



Elevation B

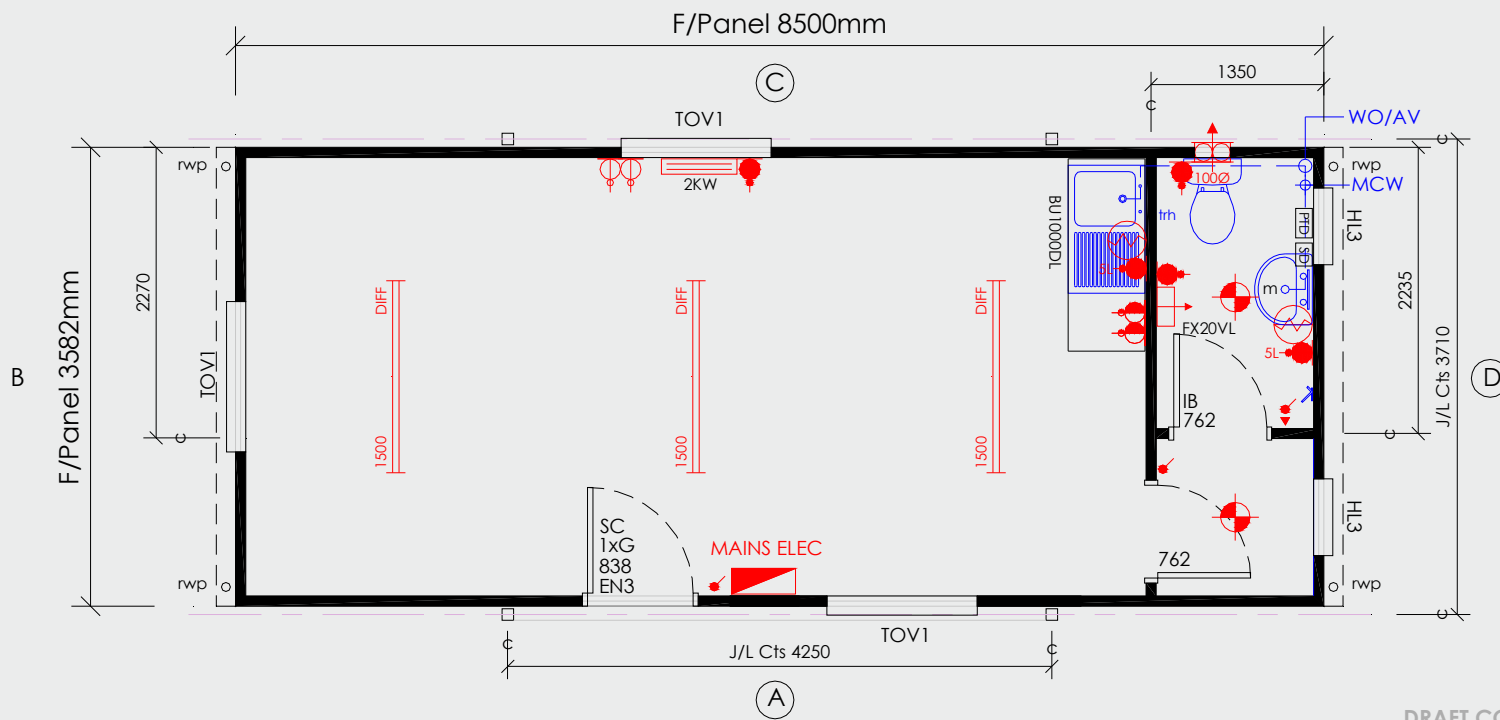
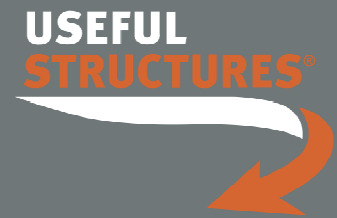


Elevation C



Elevation D

Provisional Plans 8.5m x 3.6m Canteen Unit





HIPPOWASH EVOLUTION



Strategically placed jets in cross-hatch pattern target the critical areas to ensure removal of silt and mud from tyre treads and tyre walls. In this configuration Jets are purposely NOT directed upwards, Additional vertical jets can be turned on to directly target between twin wheels. Tall side screens ensure containment and recovery of overspray.



Appendix 2
Photos of Typical Quarry Operations

Sand and Gravel Wash Plant



Appendix 2
Photos of Typical Quarry Operations



Soil Stripping Process



Sand and Gravel Extraction

Appendix 2
Photos of Typical Quarry Operations



Typical Weighbridge Office



Typical Weighbridge

Appendix 2
Photos of Typical Quarry Operations



Fencing Protection for Trees



Typical Site Entrance