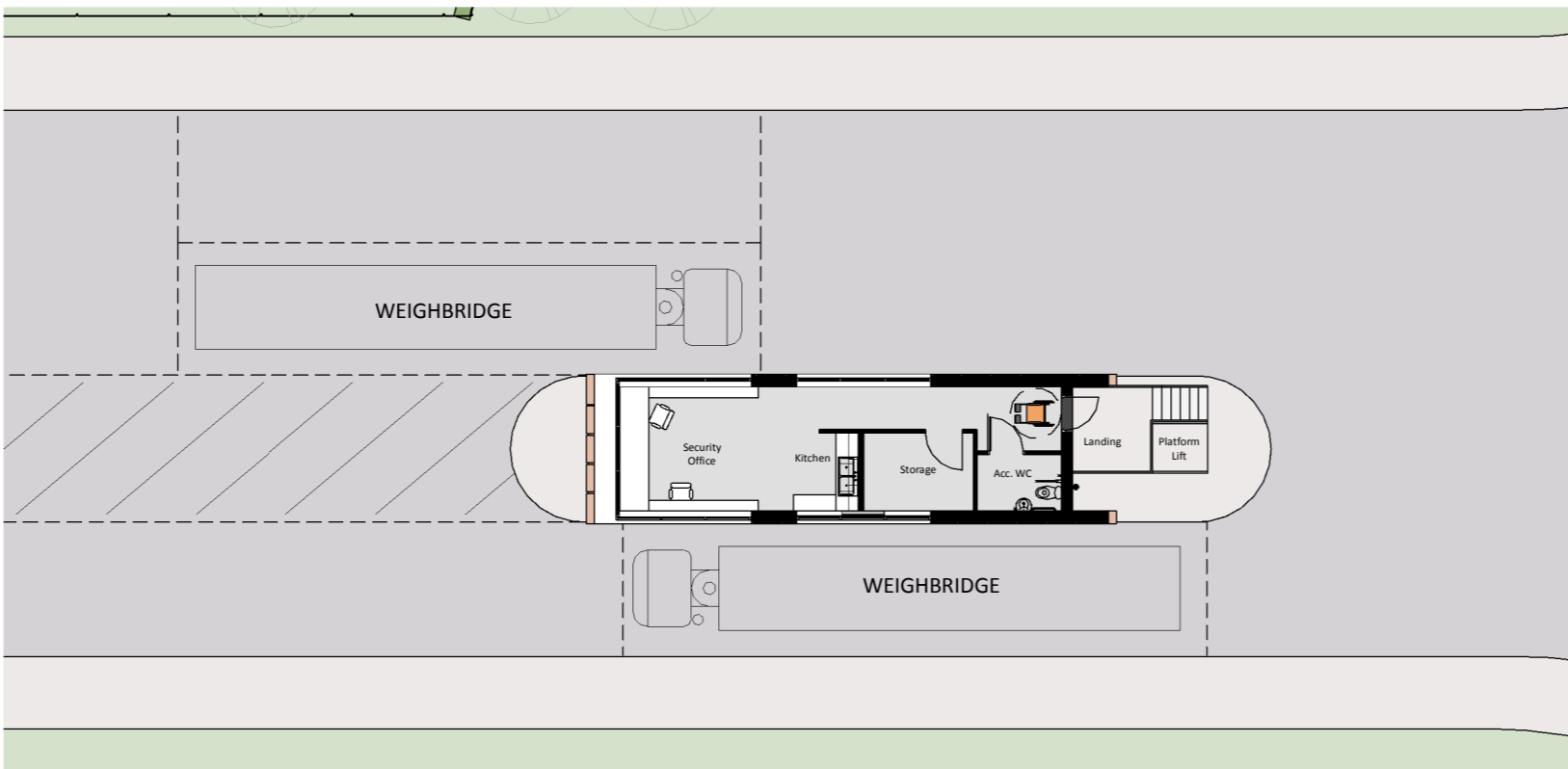
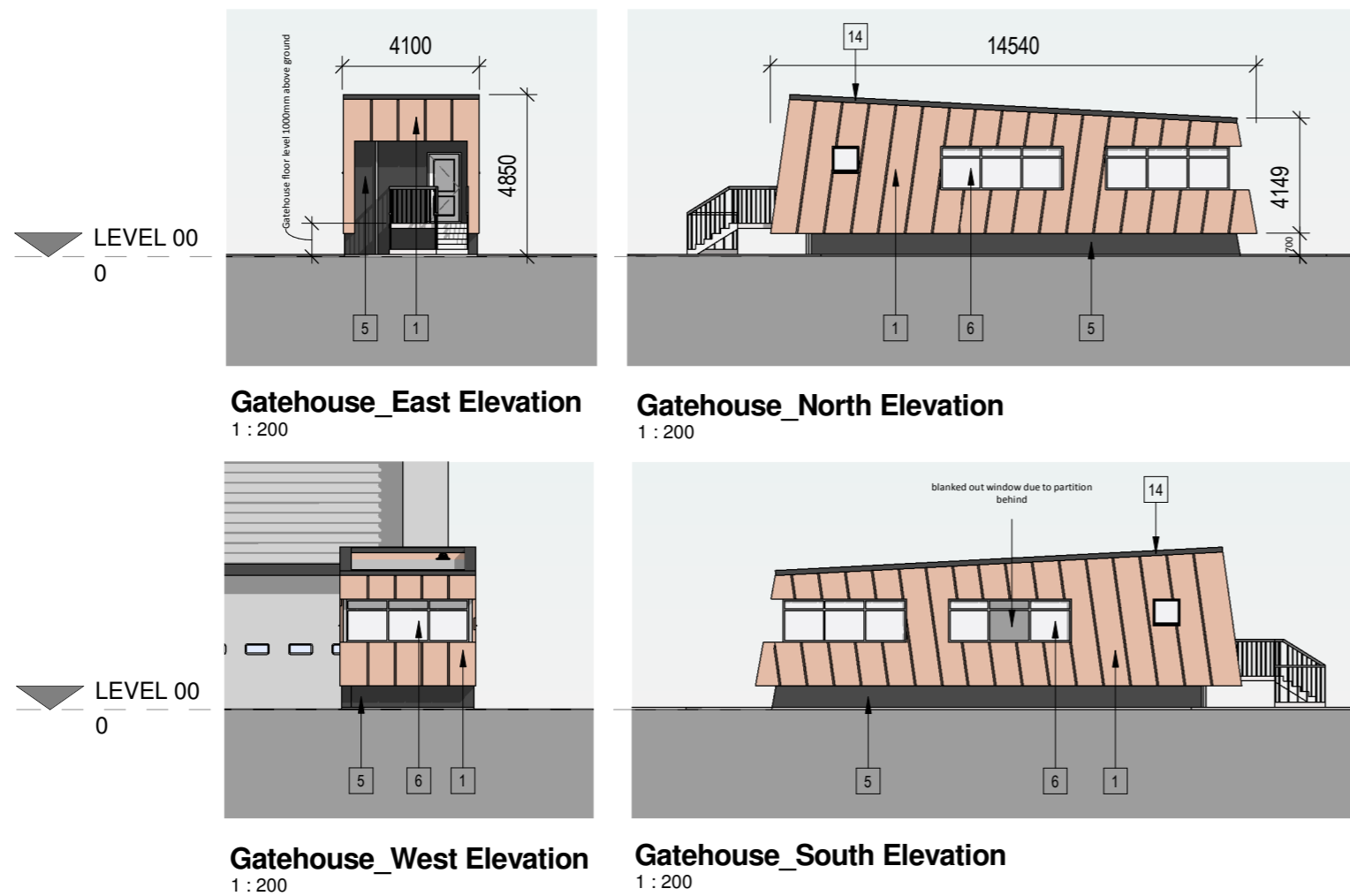


**Gatehouse\_Roof Plan**  
1 : 200



**Gatehouse\_Ground Plan**  
1 : 200

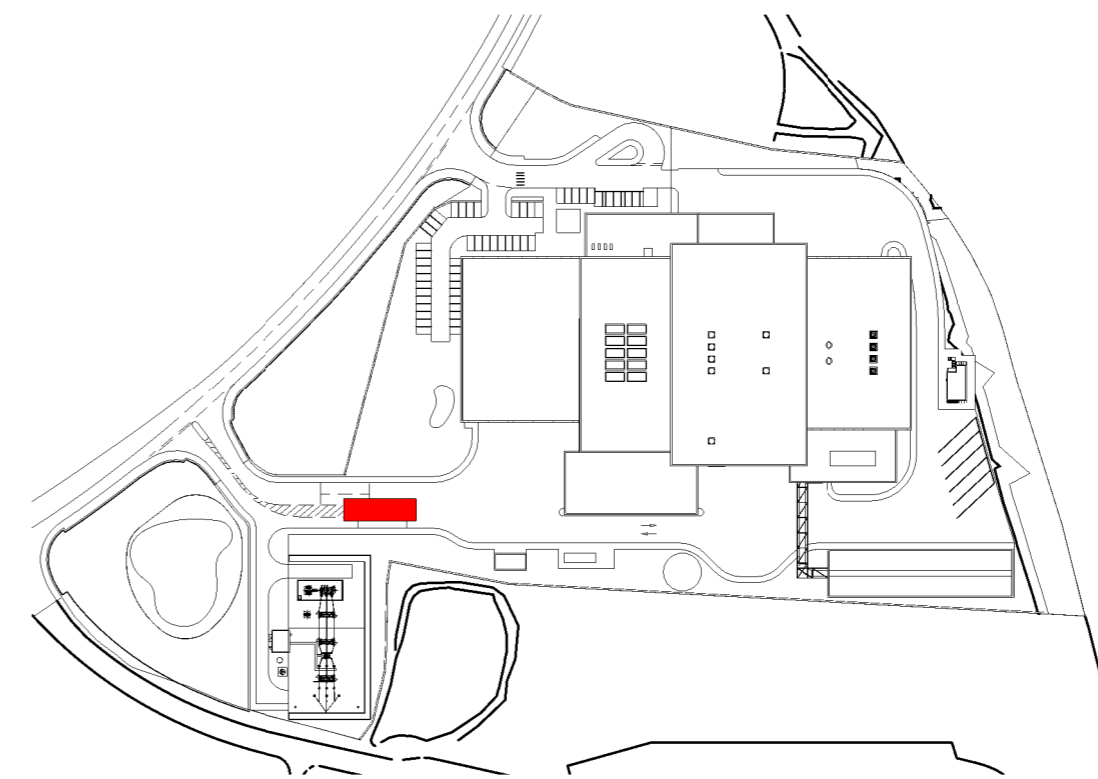


**Gatehouse\_East Elevation**  
1 : 200

**Gatehouse\_North Elevation**  
1 : 200

**Gatehouse\_West Elevation**  
1 : 200

**Gatehouse\_South Elevation**  
1 : 200



**Gatehouse\_Plan Key**

## General Notes

All site dimensions shall be verified by the Contractor on site prior to commencing any works.

Do not scale from this drawing.

Only work to written dimensions.

This drawing is the property of Fletcher-Rae (UK) Limited (t/a Fletcher-Rae) and copyright is reserved by them. The drawing is not to be copied or disclosed by or to any unauthorised persons without the prior written consent of Fletcher-Rae (UK) Limited.

# PLANNING

1. Corten steel cladding panels
5. Horizontally laid flat composite insulated cladding panel system or similar. Colour: Black Grey
6. Aluminium framed glazing or similar. Frame Colour: Merlin Grey.
13. Metal profiled roof deck with insulation and single ply membrane.
14. PPC metal faced coping. Colour: Black Grey.

A Gatehouse redesign 28.02.2019

Revision:

Scale **As indicated** A2  
 Status **Planning**  
 Drawn By **BT**  
 Checked By **JC**  
 Date **01/08/19**

Client:

**Veolia**

Project:

**Heysham Gateway ERF**

Sheet Name:

**Proposed Gatehouse**

Drawing Number: 18011\_PL212 Revision: A

**fletcher|rae**

Architects | Master Planners | Designers

Hill Quays, 5 Jordan Street, Manchester, M15 4PY

t +44 (0) 161 242 1140

f +44 (0) 161 242 1141

w www.fletcher-rae.com

e info@fletcher-rae.com

