

General Notes

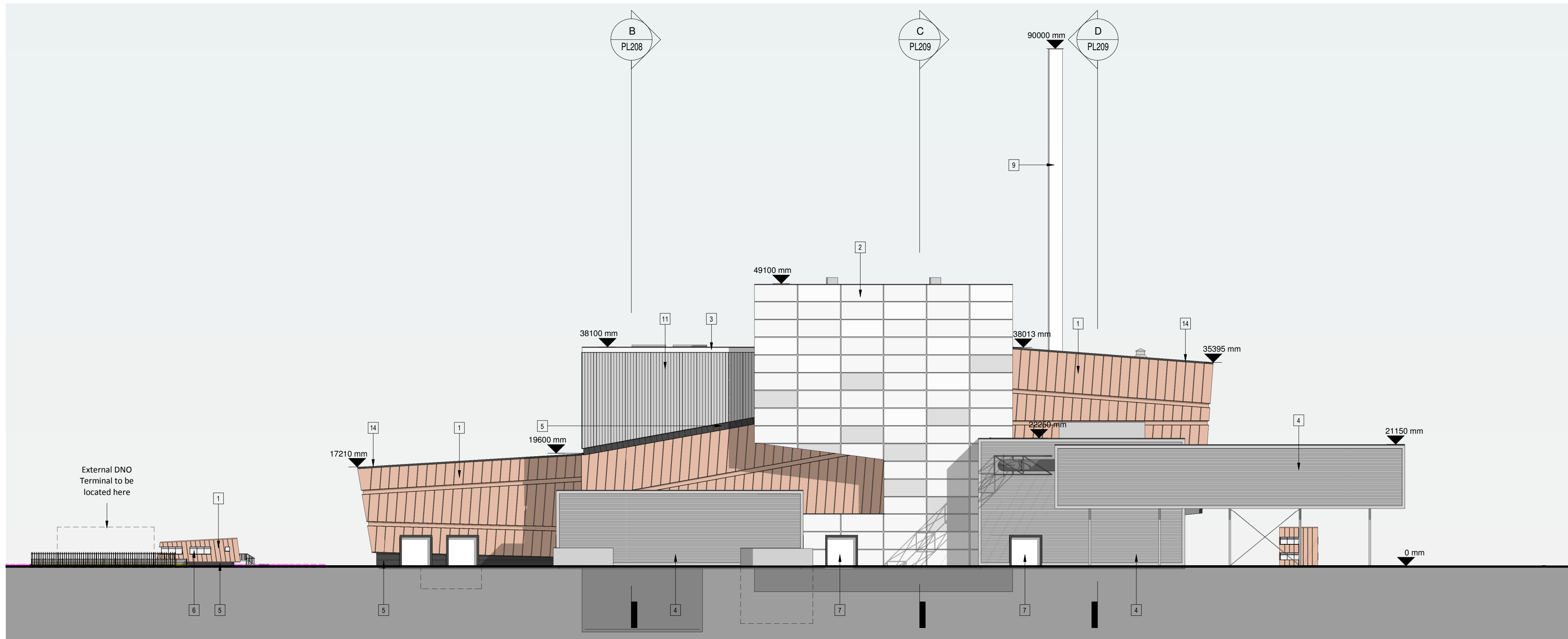
All site dimensions shall be verified by the Contractor on site prior to commencing any works.

Do not scale from this drawing.

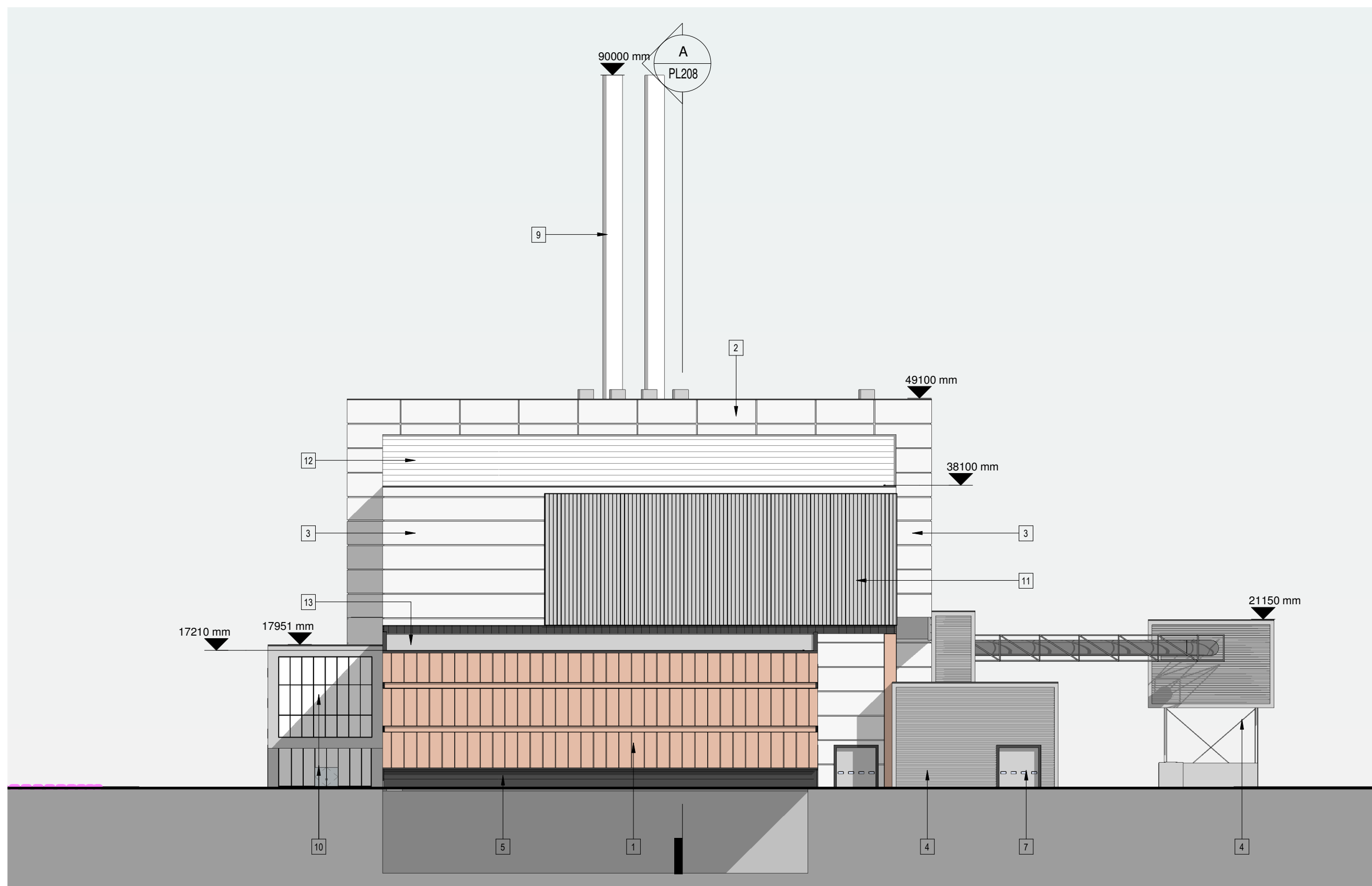
Only work to written dimensions.

This drawing is the property of Fletcher-Rae (UK) Limited (t/a Fletcher-Rae) and copyright is reserved by them. The drawing is not to be copied or disclosed by or to any unauthorised persons without the prior written consent of Fletcher-Rae (UK) Limited.

PLANNING



SOUTH_PROPOSED
1 : 500



WEST_PROPOSED
1 : 500

1. Corten steel cladding panels
2. Cross hatch laid flat composite insulated cladding panel system or similar. Colour: Light Grey
3. Horizontally laid flat composite insulated cladding panel system or similar. Colour: Light Grey
4. Horizontally laid sinusoidal cladding panel system or similar. Colour: Bright Silver
5. Horizontally laid flat composite insulated cladding panel system or similar. Colour: Black Grey
6. Aluminium framed glazing or similar. Frame Colour: Merlin Grey.
7. Level Access Loading Door. Colour: Merlin Grey.
8. PPC metal faced personnel / access doors. Colour: Merlin Grey.
9. Prefabricated Metal Stack. Colour: Light Grey.
10. Aluminium framed glazed curtain walling system or similar. Frame Colour: Merlin Grey.
11. Vertically laid profiled cladding panel system or similar. Colour: Bright Silver
12. PPC metal louver system. Colour: Merlin Grey
13. Metal profiled roof deck with insulation and single ply membrane.
14. PPC metal faced coping. Colour: Black Grey.

Ground level datum: 8.48m

Revision	Description	Date
E	Height of ACC altered	10.04.2019
D	Contractor's Office redesign	06.03.2019
C	Stack height changed	06.03.2019
B	Relocation of external DNO compound. Inclusion of decantation pit and part underground water tank. Changes to boundary treatments. Gatehouse re-design. Ground floor datum level added. Change to layout to incorporate existing landscape bund along the eastern boundary.	28.02.2019
A	Changes following DT & client feedback	12.02.2019

Scale: **1 : 500 @ A1**
 Status: **Planning**
 Drawn By: **AE**
 Checked By: **JC**
 Date: **19/12/18**

Client:
Veolia
 Project:
Heysham Gateway ERF

Sheet Name:
Proposed Elevations - Sheet 1

Drawing Number: **18011_PL204** Revision: **E**

fletcher|rae
 Architects | Master Planners | Designers
 Hill Quays, 5 Jordan Street, Manchester, M15 4PY

t +44 (0) 161 242 1140
 f +44 (0) 161 242 1141
 w www.fletcher-rae.com
 e info@fletcher-rae.com

